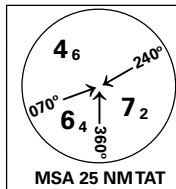


INSTRUMENT APPROACH CHART - ICAO PLAN VIEW SCALE: 1:350 000

MOLDE

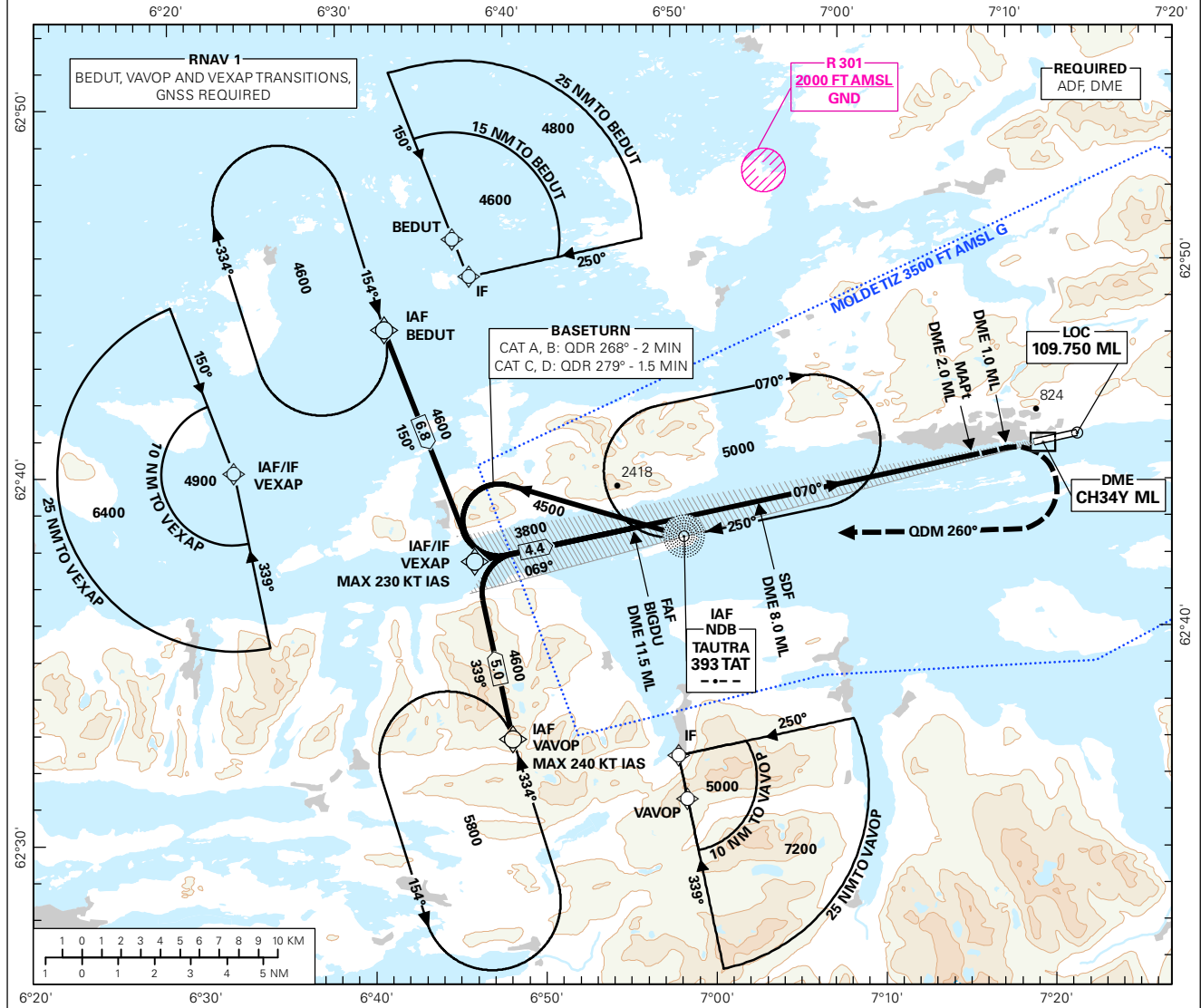
ÅRØ

LOC RWY 07

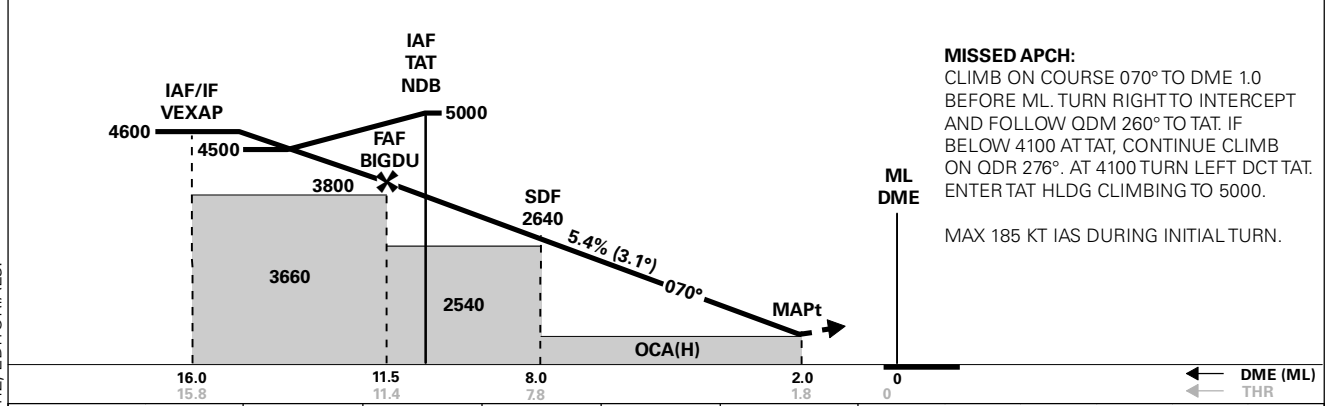


ATIS: 130.075	AD ELEV: 10	
APP: 119.350	THR ELEV: 10	DIST IN NM
AFIS: 119.950	HGT RELATED TO THR RWY 07	ELEV, ALT AND HGT IN FT
VDF: 119.950	CIRCLING HGT RELATED TO AD ELEV	
BEARINGS ARE MAGNETIC - VAR 1.1 ° E (2015)		

TRANSITION ALTITUDE
7000



DIST TO ML	10	9	8	7	6	5	4	3
ALT (HGT)	3300 (3290)	2970 (2960)	2640 (2630)	2310 (2300)	1980 (1970)	1650 (1640)	1330 (1320)	1000 (990)



MISSED APCH:
CLIMB ON COURSE 070° TO DME 1.0 BEFORE ML. TURN RIGHT TO INTERCEPT AND FOLLOW QDM 260° TO TAT. IF BELOW 4100 AT TAT, CONTINUE CLIMB ON QDR 276°. AT 4100 TURN LEFT DCT TAT. ENTER TAT HLDG CLIMBING TO 5000.
MAX 185 KT IAS DURING INITIAL TURN.

CAT OF ACFT	OCA(H)				FINAL APCH	DIST FAF - MAPt: 9.5				
	A	B	C	D		SPEED	TIME	ROD	FT/MIN	FT/MIN
STRAIGHT - IN	810 (800)	850 (840)	880 (870)	910 (900)	KT	70	90	120	150	180
CIRCLING	790 (780)	1300 (1290)	1660 (1650)	1710 (1700)	MIN:SEC	08:11	06:22	04:47	03:50	03:11

NOTE: CIRCLING S OF AD ONLY. *MNM MISSED APCH GRADIENT.

CHANGES: ENML TIZ, EDITORIALS.