

INSTRUMENT APPROACH CHART - ICAO PLAN VIEW SCALE: 1:350 000

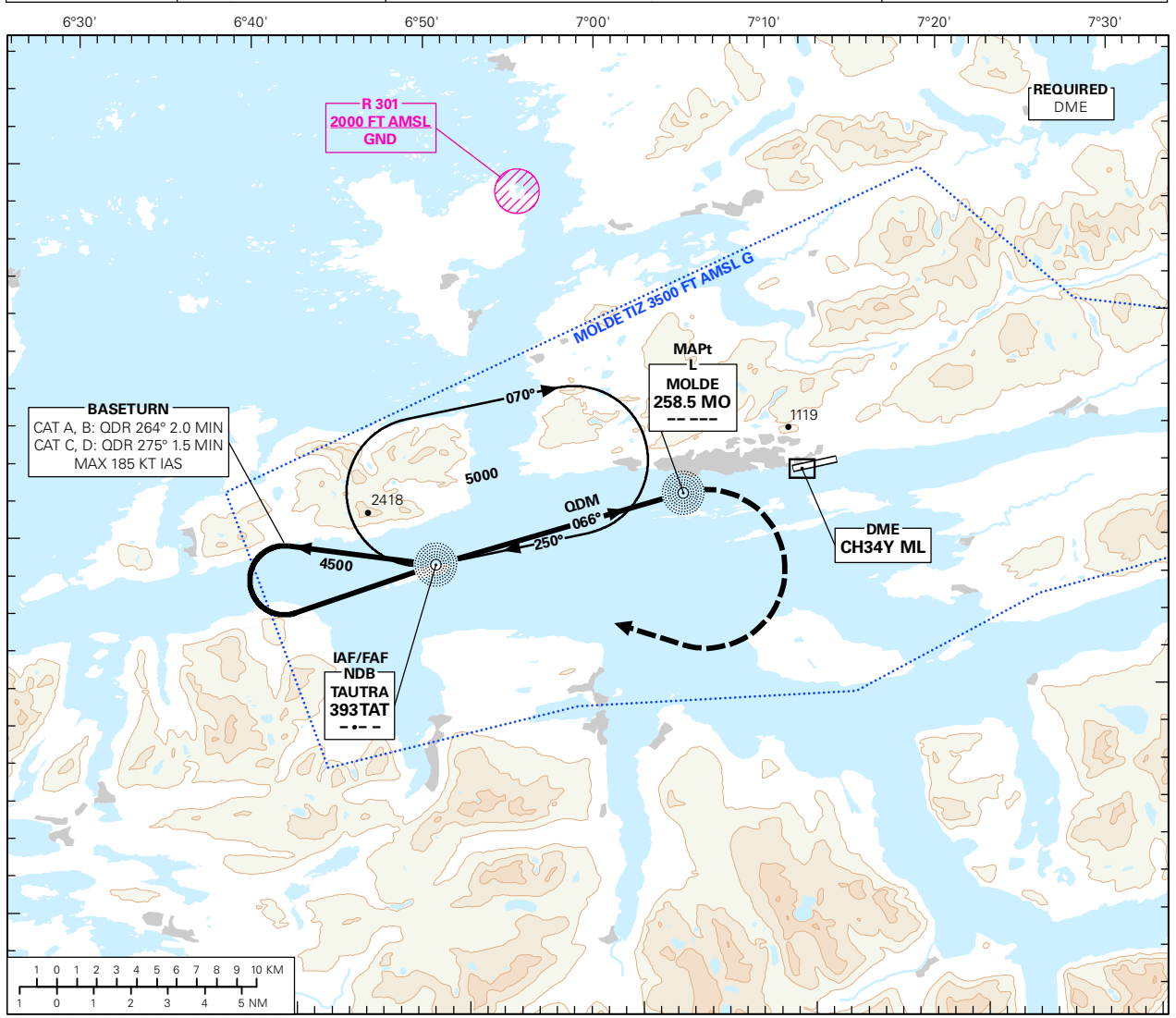
MOLDE

ÅRØ

NDB RWY 07

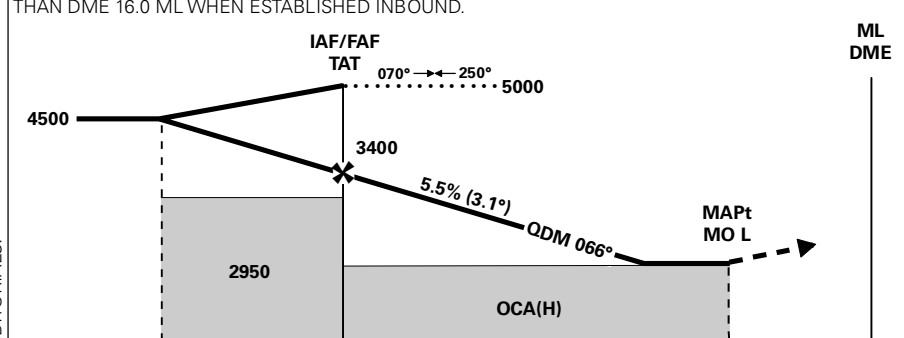
**TRANSITION ALTITUDE
7000**

<p>MSA 25 NM TAT</p>	ATIS: 130.075	AD ELEV: 10	
	APP: 119.350	THR ELEV: 10	DIST IN NM
	AFIS: 119.950	HGT RELATED TO THR RWY 07	ELEV, ALT AND HGT IN FT
	VDF: 119.950	CIRCLING HGT RELATED TO AD ELEV	
BEARINGS ARE MAGNETIC - VAR 1.1 ° E (2015)			



DIST TO ML	11	10	9	8	7	6	5	4
ALT (HGT)	-	3340 (3330)	3000 (2990)	2670 (2660)	2340 (2330)	2010 (2000)	1670 (1660)	1340 (1330)

NOTE: DESCEND IN BASETURN NO EARLIER THAN DME 16.0 ML WHEN ESTABLISHED INBOUND. PROCEDURE OFFSET: 4°



MISSED APCH:
 AT MAPt, TURN RIGHT DCT TAT. FM TAT, CONTINUE CLIMB ON QDR 278° TAT. AT 4100, TURN LEFT DCT TAT. ENTER TAT HLDG CLIMBING TO 5000.
 INITIAL MISSED APCH TURN LIMITED TO:
 CAT B: MAX 130 KT IAS
 CAT C: MAX 160 KT IAS
 CAT D: MAX 185 KT IAS

NOTE:
 AIRCRAFT REACHING 4100 PRIOR TO TAT MAY PROCEED DCT TAT HLDG CLIMBING TO 5000.

		13.5	10.2	3.3	0							
		13.3	10.0	3.1	0							
CAT OF ACFT	A	B	C	D	FINAL APCH	DIST FAF - MAPt: 70						
OCA(H)	2.5%*	1320 (1310)				SPEED	KT	70	90	120	150	180
STRAIGHT - IN	3.5%*	1190 (1180)										
CIRCLING	2.5%*	1320 (1310)	1660 (1650)	1710 (1700)	TIME	MIN:SEC	05:58	04:38	03:29	02:47	02:19	
	3.5%*	1190 (1180)	1300 (1290)	1660 (1650)								1710 (1700)

NOTE: CIRCLING S OF AD ONLY. *MNM MISSED APCH CLIMB GRADIENT.

CHANGES: ENML TIZ, EDITORIALS.