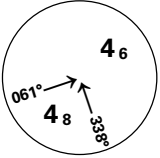
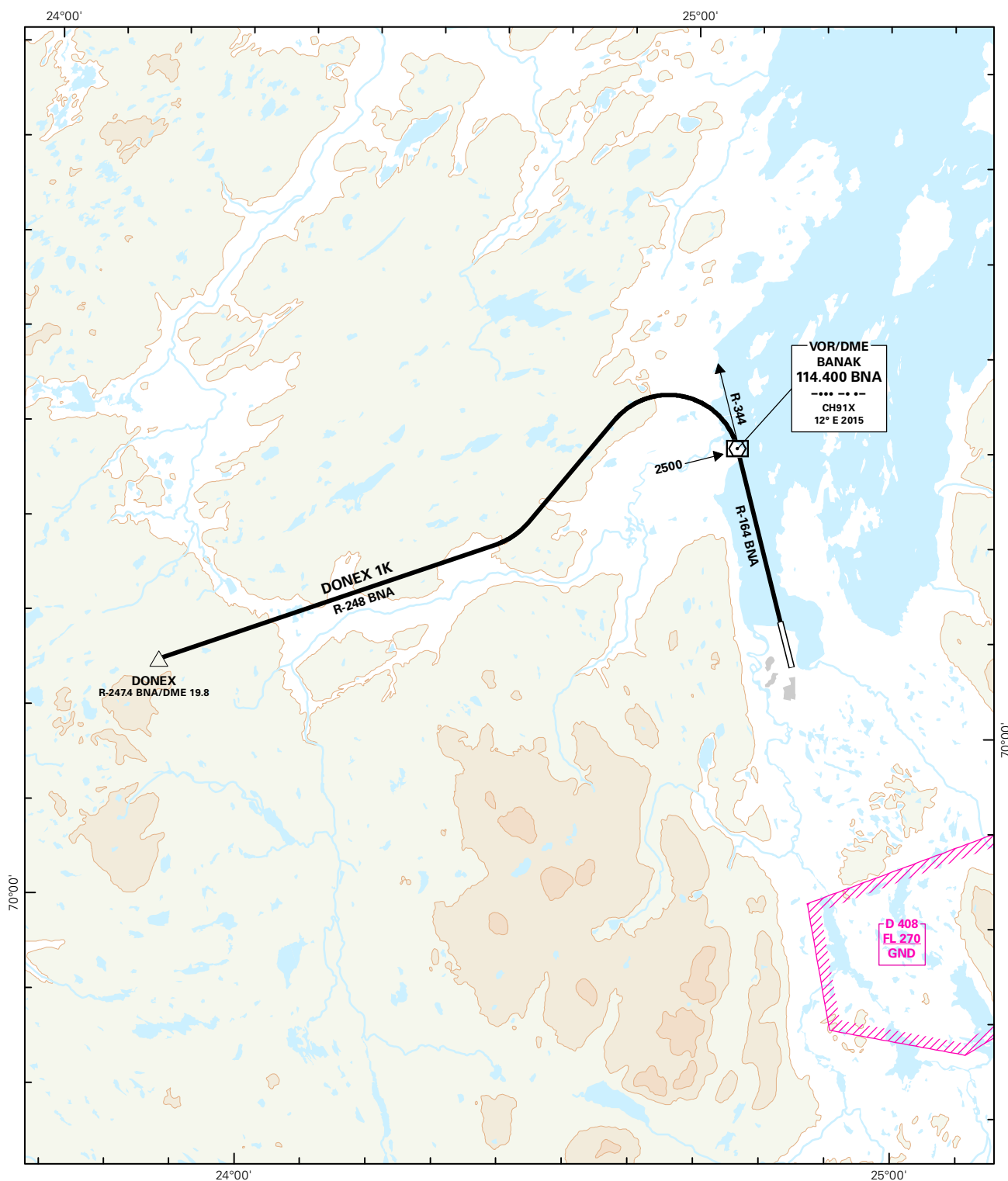


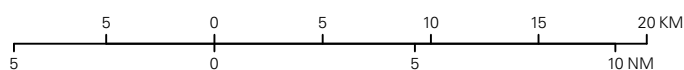
STANDARD DEPARTURE CHART INSTRUMENT - ICAO

 <p>MSA 25 NM BNA</p>	ATIS: 136.325	ALT AND ELEV ARE IN FT DIST IN NM		LAKSELV/BANAK	
	TWR: 118.900 118.050 122.100				
		1:350 000	VAR: 11.5 ° E (2015)	TA 7000	RWY 34 NORWAY DONEX 1K



SID DESCRIPTION OVERLEAF
DESCRIPTION OF WAYPOINTS, REF ENR 4.4

ATS AIRSPACE CLASSIFICATIONS: REF ENR 1.4
LEGEND: REF GEN 2.3



CHANGES: NEW PROCEDURE.

STANDARD DEPARTURE ROUTES - INSTRUMENT**LAKSELV/Banak
RWY 34****RADIO COMMUNICATION
FAILURE:**

Squawk 7600. In case of RCF after take-off, ACFT shall maintain last cleared and acknowledged level for 2 minutes, then climb to cruising level stated in CPL. After completion of SID, proceed the most direct route to join the cleared ATS-route.

**VECTORIZING/
DIRECT ROUTING:**

When being vectored or cleared for DCT routing, the climb gradient(s) stated in SID "RESTRICTIONS" apply.

DESIGNATOR	ROUTE	RESTRICTIONS	CLIMB TO	CONTACT
DONEX 1K (DONEX ONE KILO DEPARTURE)	Climb on R-164 BNA to 2500 FT or BNA, whichever later. (Proceed on R-344 BNA to 2500 FT if not obtained before passing BNA). Turn left and intercept R-248 BNA to DONEX.	MNM climb gradient 3.7% (225 FT/NM) to 3000 FT. If unable to comply, inform ATC.	7000 FT.	As instructed by Banak TWR.