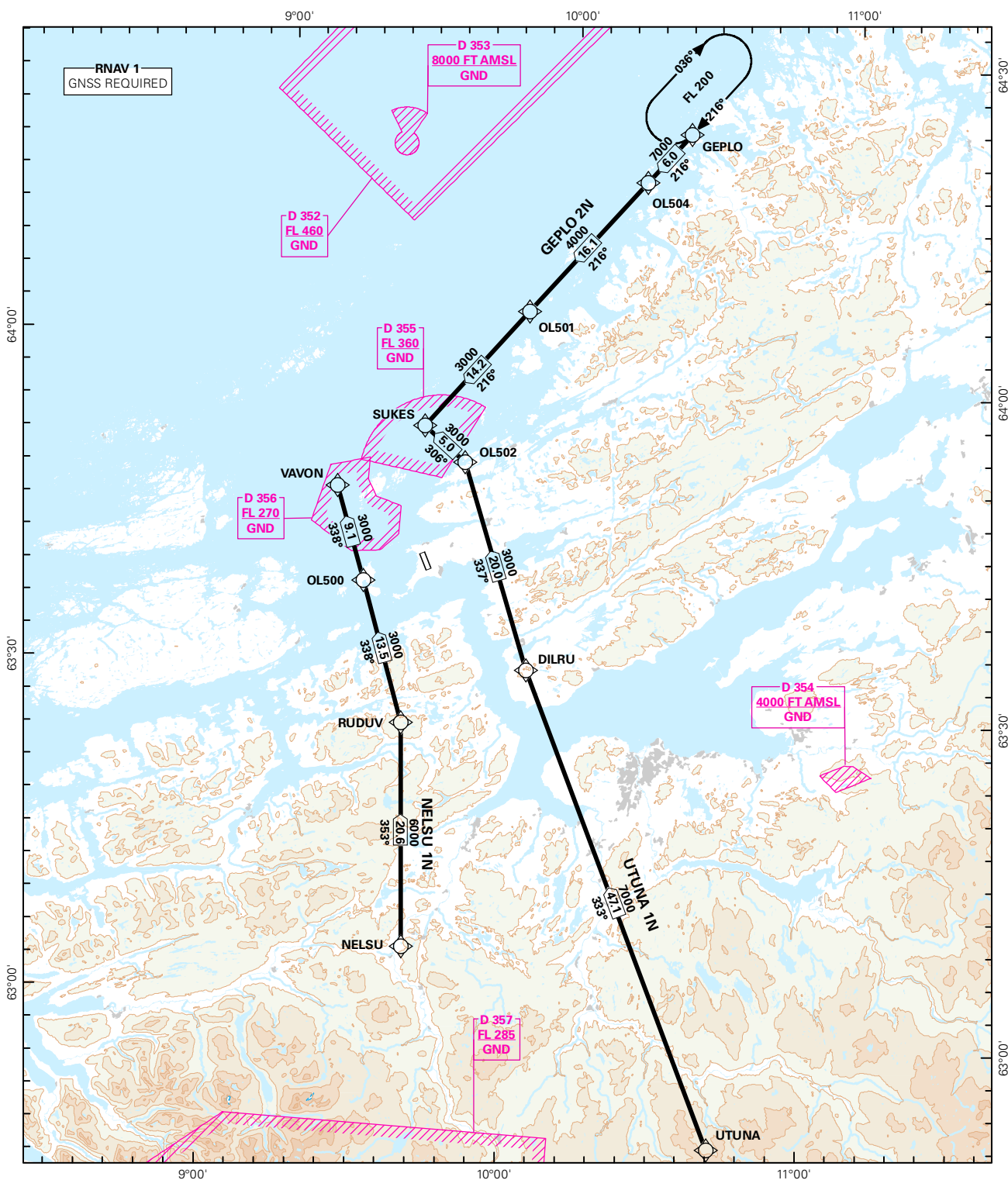


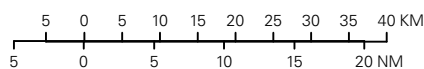
## STANDARD ARRIVAL CHART INSTRUMENT (RNAV 1 STAR BASED ON GNSS)

<div style="border: 1px solid black; border-radius: 50%; width: 60px; height: 60px; display: flex; align-items: center; justify-content: center; margin: 0 auto;"> <div style="font-size: 24px; font-weight: bold;">3<sub>9</sub></div> </div> <div style="text-align: center; font-size: 8px; font-weight: bold;">MSA 25 NM ARP</div>	ATIS: 119.325	ALT AND ELEV ARE IN FT DIST IN NM		ØRLAND RWY 15 NORWAY	
	APP: 118.250 126.200				
	TWR: 118.700				
	VDF: 118.250				
		1:1 000 000	VAR: 2.2 ° E (2015)	TA 7000	
GEPLO 2N, NELSU 1N, UTUNA 1N					



STAR DESCRIPTION OVERLEAF  
DESCRIPTION OF WAYPOINTS, REF ENR 4.4

ATS AIRSPACE CLASSIFICATIONS: REF ENR 1.4  
LEGEND: REF GEN 2.3



CHANGES: GEPL0 2N.

**STANDARD ARRIVAL ROUTES - INSTRUMENT**  
**(RNAV 1 STAR based on GNSS)**
**ØRLAND**  
**RWY 15**

**GENERAL:** Class A GNSS shall not be used.  
Surveillance service shall be available.

**LOSS OF RNAV 1 CAPABILITY:** State "UNABLE RNAV 1 DUE (reason)". Request vectoring.

**VECTORIZING:** When appropriate, vectors will be used for sequencing to final.

**RADIO COMMUNICATION FAILURE:** Squawk A7600. Proceed on STAR and start APCH to RWY 15.

DESIGNATOR	ROUTE	RESTRICTIONS	DESCEND	CLEARANCE LIMIT
<b>NELSU 1 N</b> (NELSU ONE NOVEMBER ARRIVAL)	From NELSU to RUDUV, to OL500, to VAVON.	Cross NELSU at or above 7000FT. Cross RUDUV at or above 6000 FT. Cross OL500 at or above 3000 FT. Cross VAVON at or above 3000FT.	AS cleared by ATC.	VAVON
<b>GEPLO 2N</b> (GEPLO TWO NOVEMBER ARRIVAL)	From GEPLO to OL504, to OL501, to SUKES.	Cross GEPLO at or above FL200. Cross OL504 at or above 7000 FT. Cross OL501 at or above 4000 FT. Cross SUKES at or above 3000 FT.	AS cleared by ATC	SUKES
<b>UTUNA 1N</b> (UTUNA ONE NOVEMBER ARRIVAL)	From UTUNA to DILRU, to OL502, to SUKES.	Cross UTUNA at or above FL100. Cross DILRU at or above 7000 FT. Cross OL502 at or above 3000 FT. Cross SUKES at or above 3000 FT.	As cleared by ATC.	SUKES