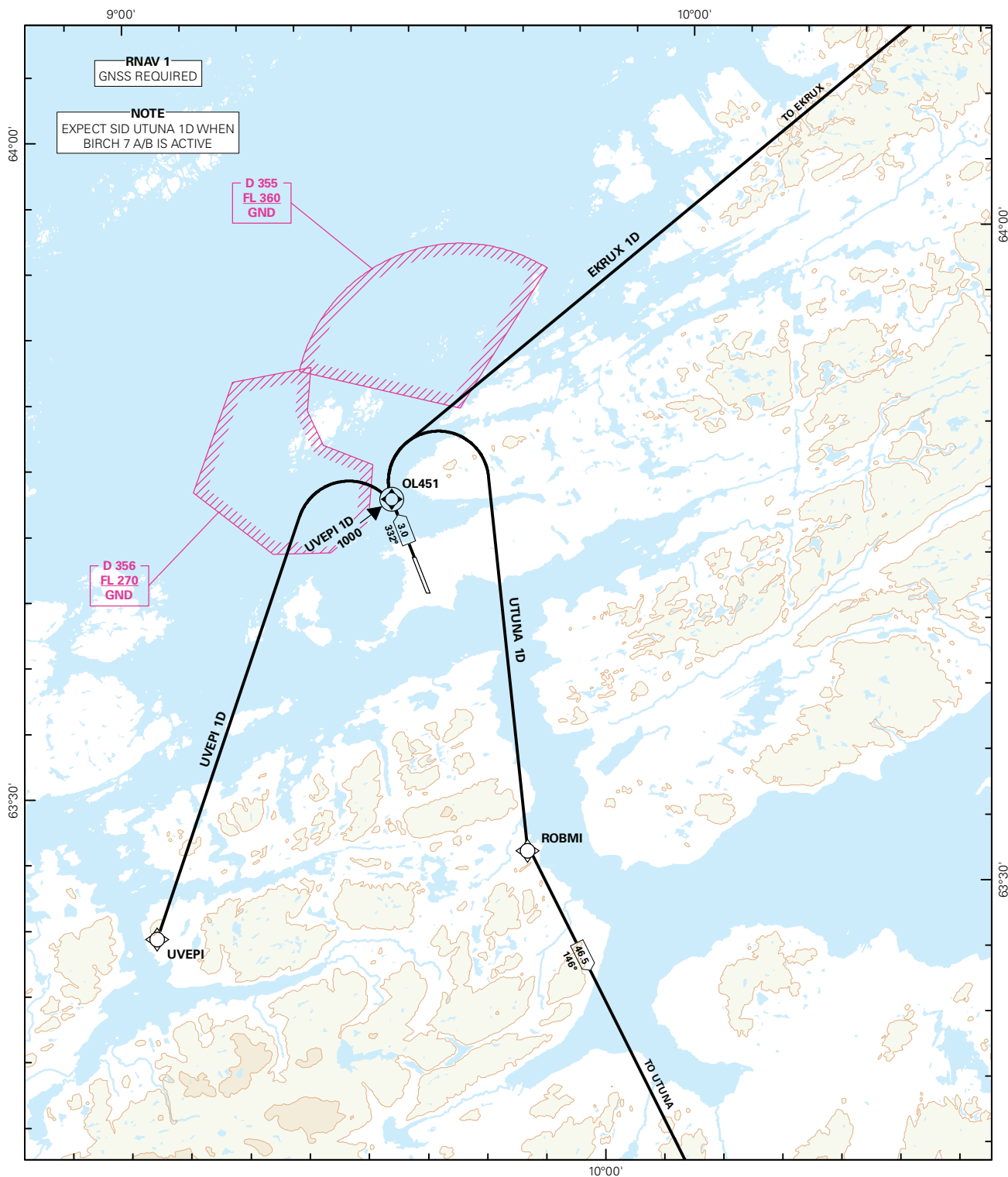


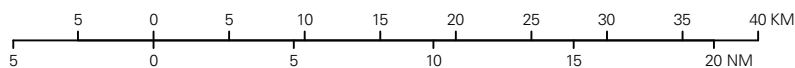
STANDARD DEPARTURE CHART INSTRUMENT (RNAV 1 SID BASED ON GNSS)

<div><div></div><div>3₉</div></div> <div>MSA 25 NM ARP</div>	ATIS: 119.325	ALT AND ELEV ARE IN FT DIST IN NM			ØRLAND RWY 33 NORWAY	
	APP: 118.250 126.200					
	TWR: 118.700					
	VDF: 118.250					
		1:500 000	VAR: 2.2 ° E (2015)	TA 7000		
	EKRUX 1D, UTUNA 1D, UVEPI 1D					



SID DESCRIPTION OVERLEAF
DESCRIPTION OF WAYPOINTS, REF ENR 4.4

ATS AIRSPACE CLASSIFICATIONS: REF ENR 1.4
LEGEND: REF GEN 2.3



CHANGES: EDITORIALS.

**STANDARD DEPARTURE ROUTES - INSTRUMENT
(RNAV 1 SID BASED ON GNSS)**
**ØRLAND
RWY 33**
GENERAL:

Class A GNSS shall not be used.
Surveillance service shall be available.

**RADIO COMMUNICATION
FAILURE:**

Squawk A7600. Maintain last assigned LVL until passing distance as described in "CLIMB TO" table for each individual SID, then climb to CPL cruising LVL. Aircraft under vectoring shall, after set transponder to A7600, proceed in the most direct manner possible to rejoin the CPL route no later than the next significant point, climbing to the CPL LVL taking into consideration the applicable MNM flight ALT.

**VECTORIZING/
DIRECT ROUTING:**

When being vectored or cleared for DCT routing, the climb gradient(s) stated in SID "RESTRICTIONS" apply.

NON RNAV 1 ACFT:

At first contact with ØRLAND ATC state "UNABLE RNAV 1".
OMNI-DIRECTIONAL DEPARTURE available (see ENOL AD 2.24).

DESIGNATOR	ROUTE	RESTRICTIONS	CLIMB TO	CONTACT
EKRUX 1D (EKRUX ONE DELTA DEPARTURE)	To OL451 on course 332°, turn right DCT EKRUX.	MNM climb gradient 5.3% (322 FT/NM) to 4000 FT. If unable to comply, inform ATC.	6000 FT. If no further climb received prior to DME 10.5 OL, climb to CPL cruising LVL.	When airborne, contact ØRLAND APP 118.250 MHZ
UTUNA 1D (UTUNA ONE DELTA DEPARTURE)	To OL451 on course 332°, turn right DCT ROBMI, to UTUNA.	MNM climb gradient 5.3% (322 FT/NM) to 4000 FT. If unable to comply, inform ATC.	6000 FT. If no further climb received prior to DME 10.5 OL, climb to CPL cruising LVL.	When airborne, contact ØRLAND APP 118.250 MHZ
UVEPI 1D (UVEPI ONE DELTA DEPARTURE)	Climb on course 332°. At 1000 FT turn left DCT UVEPI.		6000 FT. If no further climb received prior to DME 10.5 OL, climb to CPL cruising LVL.	When airborne, contact ØRLAND APP 118.250 MHZ