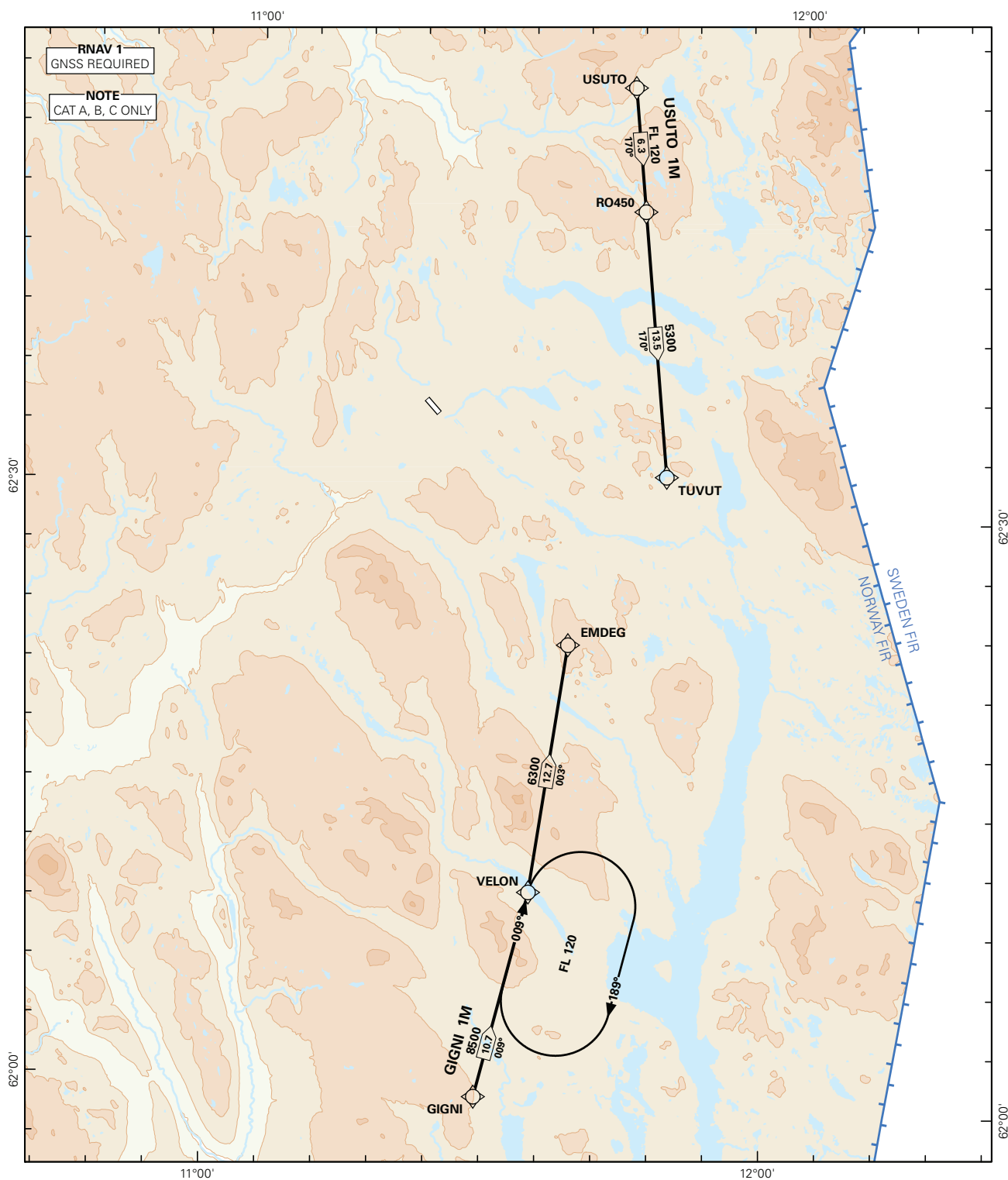


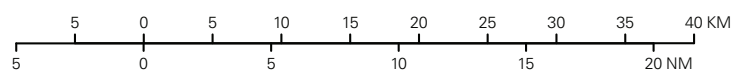
STANDARD ARRIVAL CHART INSTRUMENT - ICAO (RNAV 1 STAR BASED ON GNSS)

<div style="border: 1px solid black; border-radius: 50%; width: 60px; height: 60px; display: flex; align-items: center; justify-content: center; margin: 0 auto;"> <div style="font-size: 24px; font-weight: bold;">6₃</div> </div> <div style="text-align: center; margin-top: 5px;">MSA 25 NM ARP</div>	ATIS: 136.350 TWR: 120.400 VDF: 120.400	ALT AND ELEV ARE IN FT DIST IN NAUTICAL MILES			RØROS RWY 32 NORWAY GIGNI 1M, USUTO 1M
		1:550 000	VAR: 3.0 ° E (2015)	TA 7000	



STAR DESCRIPTION OVERLEAF
DESCRIPTION OF WAYPOINTS, REF ENR 4.4

ATS AIRSPACE CLASSIFICATIONS: REF ENR 1.4
LEGEND: REF GEN 2.3



**STANDARD ARRIVAL ROUTES - INSTRUMENT
(RNAV 1 STAR BASED ON GNSS)****RØROS
RWY 32**

REMARKS: CAT A, B, C only.

GENERAL: Class A GNSS shall not be used.
Surveillance service shall be available.

**LOSS OF RNAV 1
CAPABILITY:** Request vectoring.

VECTORIZING: Vectoring may be used for sequencing.

**RADIO COMMUNICATION
FAILURE:** Squawk A7600. Proceed on STAR and make APCH to RWY 32.

DESIGNATOR	ROUTE	RESTRICTIONS	DESCEND	CLEARANCE LIMIT
GIGNI 1M (GIGNI ONE MIKE ARRIVAL)	From GIGNI to VELON to EMDEG.	Cross VELON at or above 8500 FT. Cross EMDEG at or above 6300 FT.	As cleared by ATC.	EMDEG
USUTO 1M (USUTO ONE MIKE ARRIVAL)	From USUTO to RO450 to TUVUT.	Cross RO450 at or above FL 120. Cross TUVUT at or above 5300 FT.	As cleared by ATC.	TUVUT