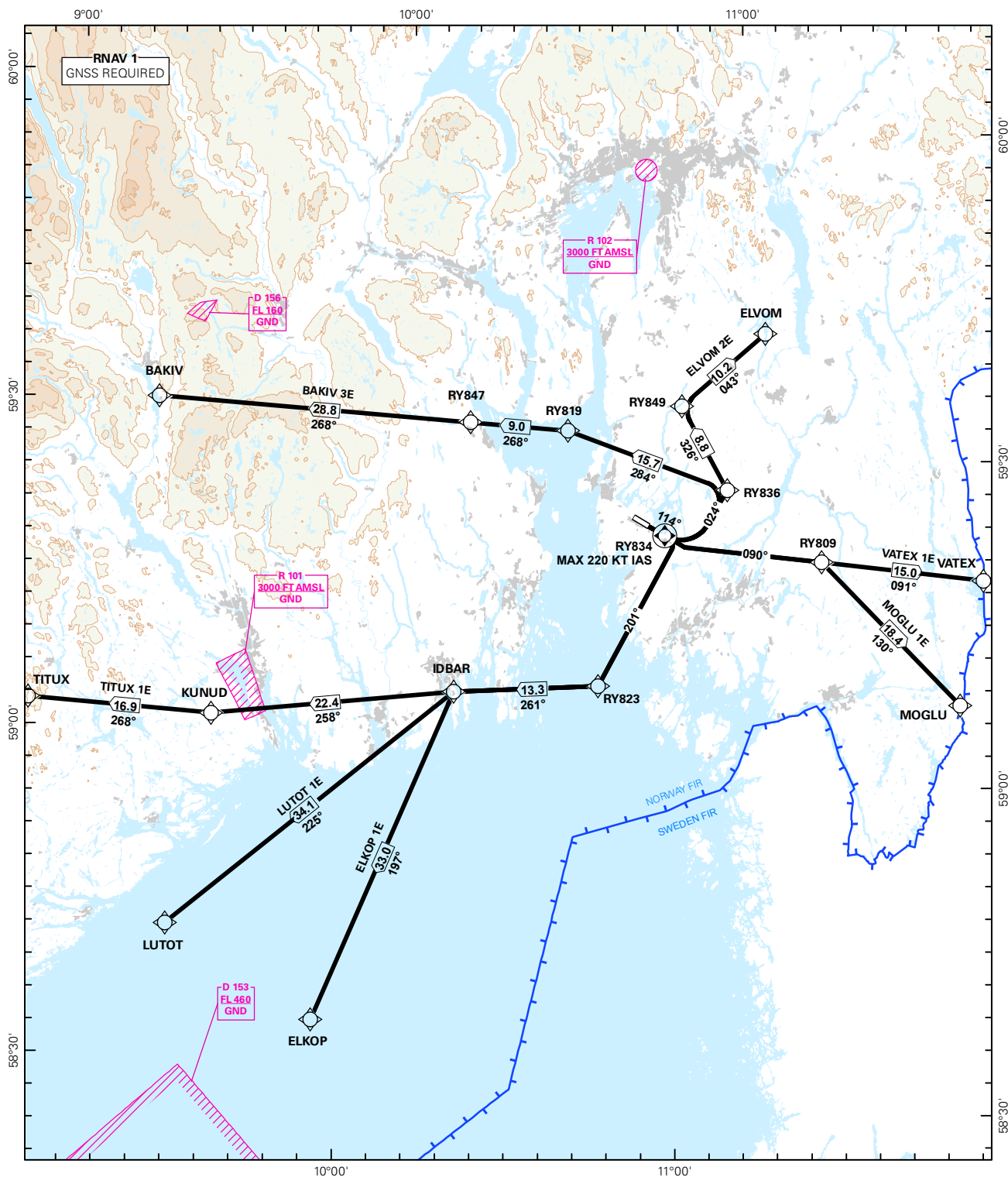


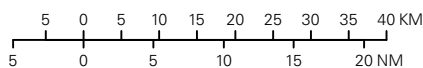
STANDARD DEPARTURE CHART INSTRUMENT (RNAV 1 SID BASED ON GNSS)

<div><div></div><div>3₂</div></div> <div>MSA 25 NM ARP</div>	ATIS: 136.175	ALT AND ELEV ARE IN FT DIST IN NM			MOSS/RYGGE RWY 12 NORWAY	
	APP FARRIS: 124.350 134.050					
	TWR: 119.500					
	VDF: 119.500					
		1:1 000 000	VAR: 2.7 ° E (2015)	TA 7000		
BAKIV 3E, ELKOP 1E, ELVOM 2E, LUTOT 1E, MOGLU 1E, TITUX 1E, VATEX 1E						



SID DESCRIPTION OVERLEAF
DESCRIPTION OF WAYPOINTS, REF ENR 4.4

ATS AIRSPACE CLASSIFICATIONS: REF ENR 1.4
LEGEND: REF GEN 2.3



CHANGES: COMPLETE REVISION.

**STANDARD DEPARTURE ROUTES - INSTRUMENT
(RNAV 1 SID BASED ON GNSS)**
**MOSS/Rygge
RWY 12**

GENERAL:	Class A GNSS shall not be used. Surveillance service shall be available. MAX 250 KT IAS below FL100 unless otherwise instructed by ATC
RADIO COMMUNICATION FAILURE:	Squawk A7600. Maintain last assigned LVL for 2 minutes, then climb to CPL cruising LVL. Aircraft under vectoring shall, after set transponder to A7600, proceed in the most direct manner possible to rejoin the CPL route no later than the next significant point, climbing to the CPL cruising LVL taking into consideration the applicable MNM flight ALT.
CLOSE-IN OBSTACLES	Rising terrain up to 0.3 NM from THR 30 requires more than 6,6 % climb gradient, and must be avoided visually or by other means
VECTORING/ DIRECT ROUTING:	When being vectored or cleared for DCT routing, the climb gradient(s) stated in SID "RESTRICTIONS"-table apply.
NON RNAV 1 ACFT:	At first contact with "RYGGE TWR" state "UNABLE RNAV 1 DUE (reason)". OMNI-DIRECTIONAL DEPARTURE available (see ENRY AD 2.24).
ATC CLEARANCE:	Departing IFR flights shall obtain ATC clearance from "RYGGE TWR".

DESIGNATOR	ROUTE	RESTRICTIONS	CLIMB TO	CONTACT
BAKIV 3E (BAKIV THREE ECHO DEPARTURE)	Climb on course 114° to RY834, turn left to intercept course 024° to RY836. Turn left to RY819, to RY847, to BAKIV.	MNM climb gradient 6.6% (401 FT/NM) to 4000 FT. If unable to comply, inform ATC. MAX 220 KT IAS at RY834. MAX 250 KT IAS at RY836.	3000 FT When passing RY847 climb to 5000 FT. Expect further climb from FARRIS APP	When instructed by TWR, contact FARRIS APP 124.350 MHZ
ELKOP 1E (ELKOP ONE ECHO DEPARTURE)	Climb on course 114° to RY834, turn right to intercept course 201° to RY823, to IDBAR, to ELKOP.	MNM climb gradient 6.6% (401 FT/NM) to 3000 FT. If unable to comply, inform ATC. MAX 220 KT IAS at RY834.	3000 FT Expect further climb from FARRIS APP	When instructed by TWR, contact FARRIS APP 124.350 MHZ
ELVOM 2E (ELVOM TWO ECHO DEPARTURE)	Climb on course 114° to RY834, turn left to intercept course 024° to RY836, to RY849, to ELVOM.	MNM climb gradient 6.6% (401 FT/NM) to 3000 FT. If unable to comply, inform ATC. MAX 220 KT IAS at RY834.	3000 FT When passing RY849 climb to 4000 FT. Expect further climb from FARRIS APP	When instructed by TWR, contact FARRIS APP 124.350 MHZ
LUTOT 1E (LUTOT ONE ECHO DEPARTURE)	Climb on course 114° to RY834, turn right to intercept course 201° to RY823, to IDBAR, to LUTOT.	MNM climb gradient 6.6% (401 FT/NM) to 3000 FT. If unable to comply, inform ATC. MAX 220 KT IAS at RY834.	3000 FT Expect further climb from FARRIS APP	When instructed by TWR, contact FARRIS APP 124.350 MHZ
MOGLU 1E (MOGLU ONE ECHO DEPARTURE)	Climb on course 114° to RY834, intercept course 090° to RY809, to MOGLU.	MNM climb gradient 6.6% (401 FT/NM) to 3000 FT. If unable to comply, inform ATC. MAX 220 KT IAS at RY834.	3000 FT Expect further climb from FARRIS APP	When instructed by TWR, contact FARRIS APP 124.350 MHZ
TITUX 1E (TITUX ONE ECHO DEPARTURE)	Climb on course 114° to RY834, turn right to intercept course 201° to RY823, to IDBAR, to KUNUD, to TITUX.	MNM climb gradient 6.6% (401 FT/NM) to 3000 FT. If unable to comply, inform ATC. MAX 220 KT IAS at RY834.	3000 FT Expect further climb from FARRIS APP	When instructed by TWR, contact FARRIS APP 124.350 MHZ
VATEX 1E (VATEX ONE ECHO DEPARTURE)	Climb on course 114° to RY834, intercept course 090° to RY809, to VATEX.	MNM climb gradient 6.6% (401 FT/NM) to 3000 FT. If unable to comply, inform ATC. MAX 220 KT IAS at RY834.	3000 FT Expect further climb from FARRIS APP	When instructed by TWR, contact FARRIS APP 124.350 MHZ