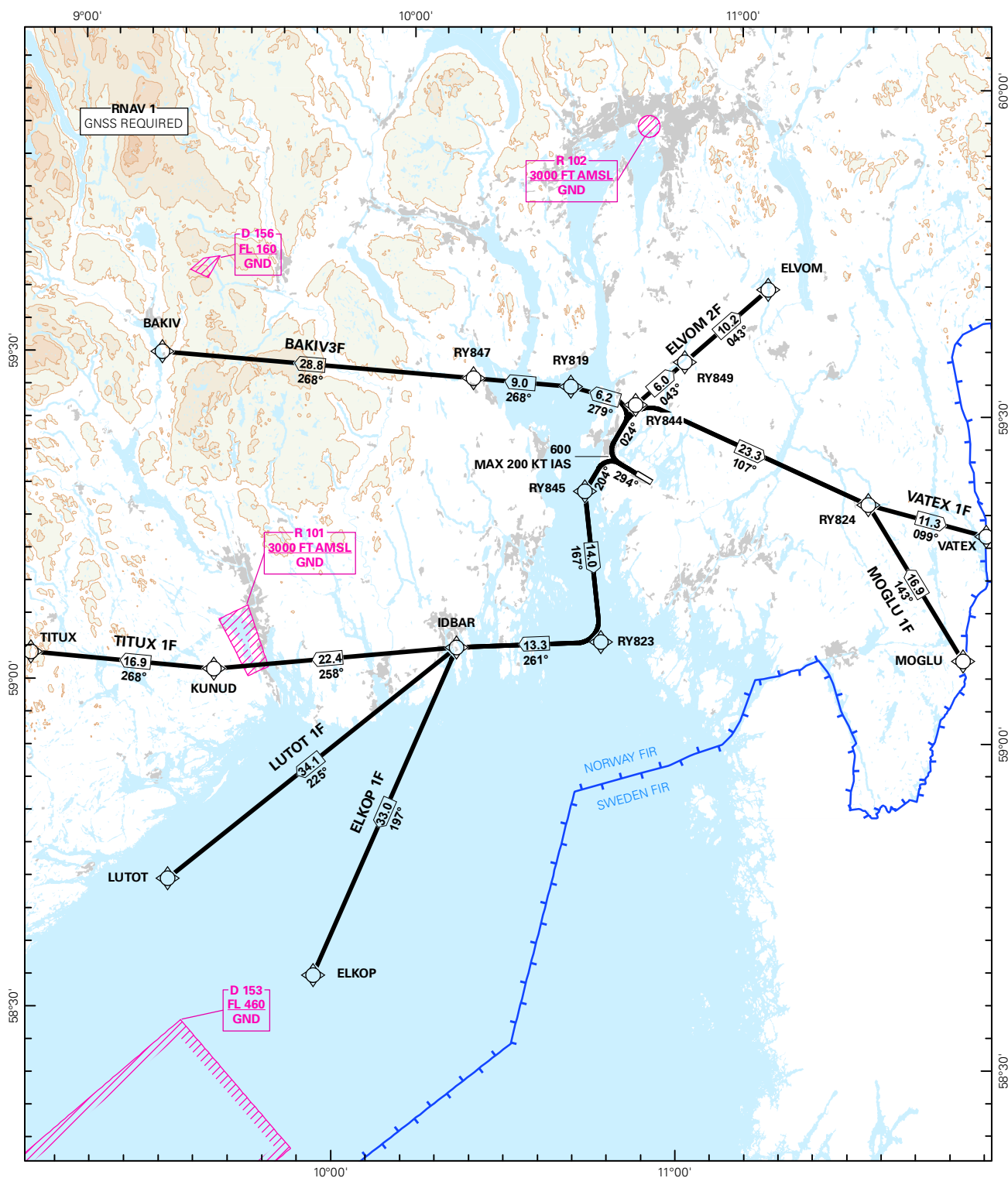


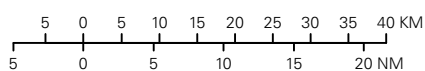
STANDARD DEPARTURE CHART INSTRUMENT (RNAV 1 SID BASED ON GNSS)

<div><div></div><div>3₂</div><div>MSA 25 NM ARP</div></div>	ATIS: 136.175	ALT AND ELEV ARE IN FT DIST IN NM			MOSS/RYGGE RWY 30 NORWAY
	APP FARRIS: 124.350 134.050				
	TWR: 119.500				
	VDF: 119.500				
		1:1 000 000	VAR: 2.7 ° E (2015)	TA 7000	
BAKIV 3F, ELKOP 1F, ELVOM 2F, LUTOT 1F, MOGLU 1F, TITUX 1F, VATEX 1F					



SID DESCRIPTION OVERLEAF
DESCRIPTION OF WAYPOINTS, REF ENR 4.4

ATS AIRSPACE CLASSIFICATIONS: REF ENR 1.4
LEGEND: REF GEN 2.3



CHANGES: COMPLETE REVISION.

**STANDARD DEPARTURE ROUTES - INSTRUMENT
(RNAV 1 SID BASED ON GNSS)**
**MOSS/Rygge
RWY 30**

GENERAL:	Class A GNSS shall not be used. Surveillance service shall be available. MAX 250 KT IAS below FL100 unless otherwise instructed by ATC
RADIO COMMUNICATION FAILURE:	Squawk A7600. Maintain last assigned LVL for 2 minutes, then climb to CPL cruising LVL. Aircraft under vectoring shall, after set transponder to A7600, proceed in the most direct manner possible to rejoin the CPL route no later than the next significant point, climbing to the CPL cruising LVL taking into consideration the applicable MNM flight ALT
CLOSE-IN OBSTACLES	Vegetation up to 0.1 NM from THR 12 requires more than 6,6 % climb gradient, and must be avoided visually or by other means
VECTORING/ DIRECT ROUTING:	When being vectored or cleared for DCT routing, the climb gradient(s) stated in SID "RESTRICTIONS"-table apply.
NON RNAV 1 ACFT:	At first contact with "RYGGE TWR" state "UNABLE RNAV 1 DUE (reason)". OMNI-DIRECTIONAL DEPARTURE available (see ENRY AD 2.24).
ATC CLEARANCE:	Departing IFR flights shall obtain ATC clearance from "RYGGE TWR".

DESIGNATOR	ROUTE	RESTRICTIONS	CLIMB TO	CONTACT
BAKIV 3F (BAKIV THREE FOXTROT DEPARTURE)	Climb on course 294° to 600 FT, turn right to intercept course 024° to RY844. Turn left to RY819, to RY847, to BAKIV.	MNM climb gradient 6.6% (401 FT/NM) to 4000 FT. If unable to comply, inform ATC. MAX 200 KT IAS during the first turn. MAX 220 KT IAS at RY844.	3000 FT When passing RY847 climb to 5000 FT. Expect further climb from FARRIS APP	When instructed by TWR, contact FARRIS APP 124.350 MHZ
ELKOP 1F (ELKOP ONE FOXTROT DEPARTURE)	Climb on course 294° to 600 FT, turn left to intercept course 204° to RY845, to RY823, to IDBAR, to ELKOP.	MNM climb gradient 6.6% (401 FT/NM) to 3000 FT. If unable to comply, inform ATC. MAX 200 KT IAS during the first turn.	3000 FT Expect further climb from FARRIS APP.	When instructed by TWR, contact FARRIS APP 124.350 MHZ
ELVOM 2F (ELVOM TWO FOXTROT DEPARTURE)	Climb on course 294° to 600 FT, turn right to intercept course 024° to RY844, to RY849, to ELVOM.	MNM climb gradient 6.6% (401 FT/NM) to 3000 FT. If unable to comply, inform ATC. MAX 200 KT IAS during the first turn.	3000 FT When passing RY849 climb to 4000 FT. Expect further climb from FARRIS APP.	When instructed by TWR, contact FARRIS APP 124.350 MHZ
LUTOT 1F (LUTOT ONE FOXTROT DEPARTURE)	Climb on course 294° to 600 FT, turn left to intercept course 204° to RY845, to RY823, to IDBAR, to LUTOT.	MNM climb gradient 6.6% (401 FT/NM) to 3000 FT. If unable to comply, inform ATC. MAX 200 KT IAS during the first turn.	3000 FT Expect further climb from FARRIS APP	When instructed by TWR, contact FARRIS APP 124.350 MHZ
MOGLU 1F (MOGLU ONE FOXTROT DEPARTURE)	Climb on course 294° to 600 FT, turn right to intercept course 024° to RY844, to RY824, to MOGLU.	MNM climb gradient 6.6% (401 FT/NM) to 3000 FT. If unable to comply, inform ATC. MAX 200 KT IAS during the first turn. MAX 250 KT IAS at RY844	3000 FT Expect further climb from FARRIS APP.	When instructed by TWR, contact FARRIS APP 124.350 MHZ
TITUX 1F (TITUX ONE FOXTROT DEPARTURE)	Climb on course 294° to 600 FT, turn left to intercept course 204° to RY845, to RY823, to IDBAR, to KUNUD, to TITUX.	MNM climb gradient 6.6% (401 FT/NM) to 3000 FT. If unable to comply, inform ATC. MAX 200 KT IAS during the first turn.	3000 FT Expect further climb from FARRIS APP	When instructed by TWR, contact FARRIS APP 124.350 MHZ
VATEX 1F (VATEX ONE FOXTROT DEPARTURE)	Climb on course 294° to 600 FT, turn right to intercept course 024° to RY844, to RY824, to VATEX.	MNM climb gradient 6.6% (401 FT/NM) to 3000 FT. If unable to comply, inform ATC. MAX 200 KT IAS during the first turn. MAX 250 KT IAS at RY844	3000 FT Expect further climb from FARRIS APP.	When instructed by TWR, contact FARRIS APP 124.350 MHZ