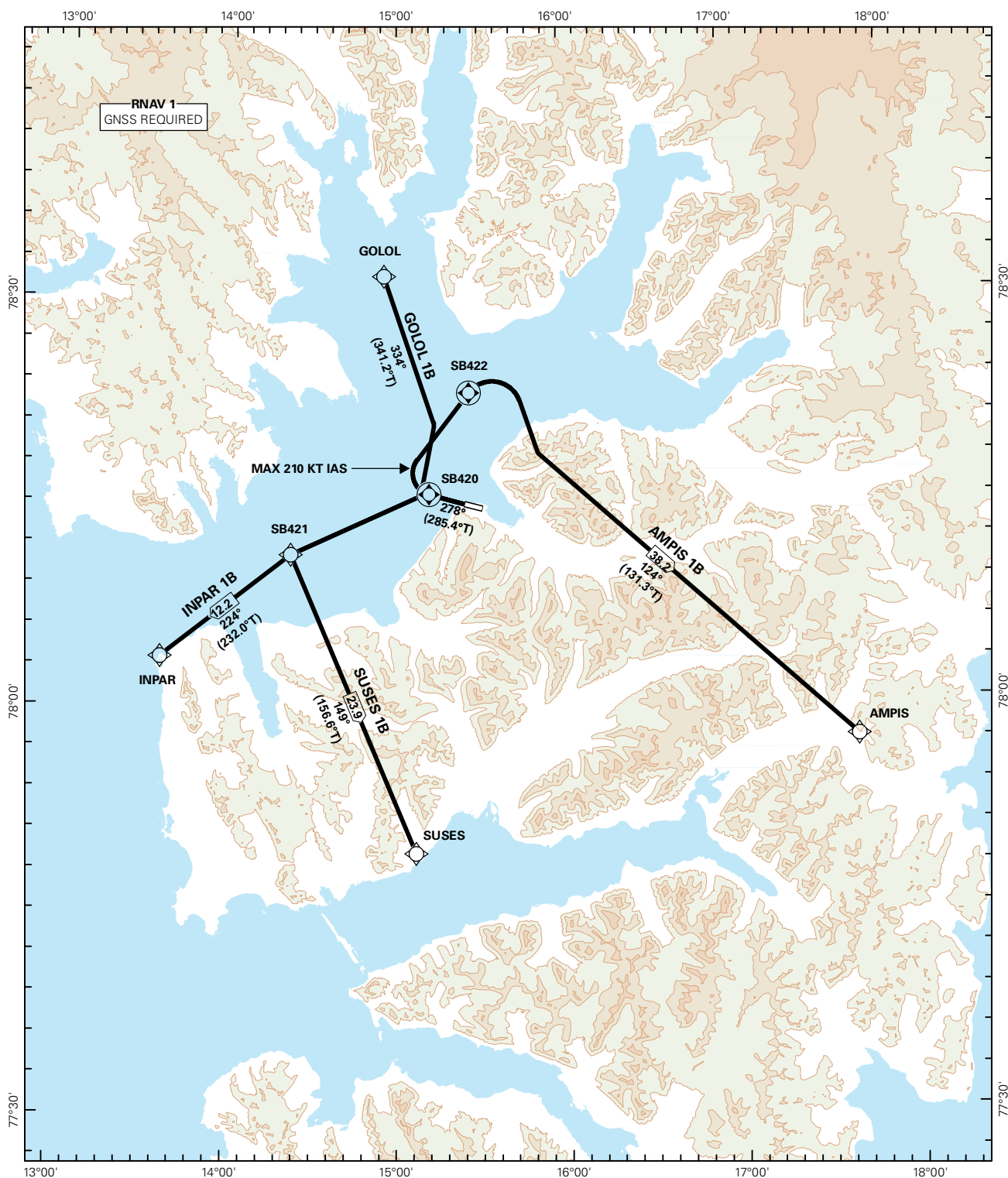


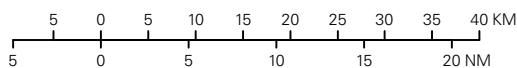
STANDARD DEPARTURE CHART INSTRUMENT - ICAO (RNAV 1 SID BASED ON GNSS)

<div><div></div><div>5₁</div><div>MSA 25 NM ARP</div></div>	AFIS: 118.100 119.850		ALT AND ELEV ARE IN FT DIST IN NM			SVALBARD/LONGYEAR RWY 28 NORWAY
	VDF: 118.100					
			1:800 000	VAR: 7.5 ° E (2015)	TA 5000	
	AMPIS 1B, GOLOL 1B, INPAR 1B, SUSES 1B					



SID DESCRIPTION OVERLEAF
DESCRIPTION OF WAYPOINTS, REF ENR 4.4

ATS AIRSPACE CLASSIFICATIONS: REF ENR 1.4
LEGEND: REF GEN 2.3



CHANGES: NEW PROCEDURES.

**STANDARD DEPARTURE ROUTES - INSTRUMENT
(RNAV 1 SID BASED ON GNSS)**
**SVALBARD/Longyear
RWY 28**

GENERAL:	Class A GNSS shall not be used.
RADIO COMMUNICATION FAILURE:	Squawk A7600. Maintain last assigned LVL for 2 minutes, then climb to CPL cruising LVL. Aircraft under vectoring shall, after set transponder to A 7600, proceed in the most direct manner possible to rejoin the CPL route no later than the next significant point, climbing to the CPL cruising LVL taking into consideration the applicable MNM flight ALT.
CLOSE-IN OBSTACLES:	Vessels crossing the departure area can require more than 3.3% climb gradient, and must be avoided visually or by other means.
ATC CLEARANCE:	Departing IFR flights shall obtain ATC clearance from LONGYEAR INFORMATION
NON RNAV 1 ACFT:	At first contact with Longyear Information state "UNABLE RNAV 1 DUE (reason)". OMNI-DIRECTIONAL DEPARTURE available (see ENSB AD 2.24)
NOTE:	Vessels higher than 51 m AMSL have not been considered to calculate the minimum climb gradient.

DESIGNATOR	ROUTE	RESTRICTIONS	CLIMB TO	CONTACT
AMPIS 1B (AMPIS ONE BRAVO DEPARTURE)	To SB420 on course 278°, turn right DCT SB422. Turn right to AMPIS	MNM climb gradient 5.3% (322 FT/NM) to 3900 FT. MAX 210 KT IAS at SB420. If unable to comply, inform ATC.	5500 FT	As instructed by LONGYEAR INFORMATION
GOLOL 1B (GOLOL ONE BRAVO DEPARTURE)	To SB420 on course 278°, to GOLOL on course 334°.	-	5500 FT	As instructed by LONGYEAR INFORMATION
INPAR 1B (INPAR ONE BRAVO DEPARTURE)	To SB420 on course 278°, turn left DCT SB421, to INPAR.	-	5500 FT	As instructed by LONGYEAR INFORMATION
SUSES 1B (SUSES ONE BRAVO DEPARTURE)	To SB420 on course 278°, turn left DCT SB421. Turn left to SUSES.	MNM climb gradient 3.4% (207 FT/NM) to 3600 FT. If unable to comply, inform ATC	5100 FT	As instructed by LONGYEAR INFORMATION