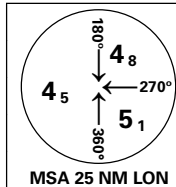
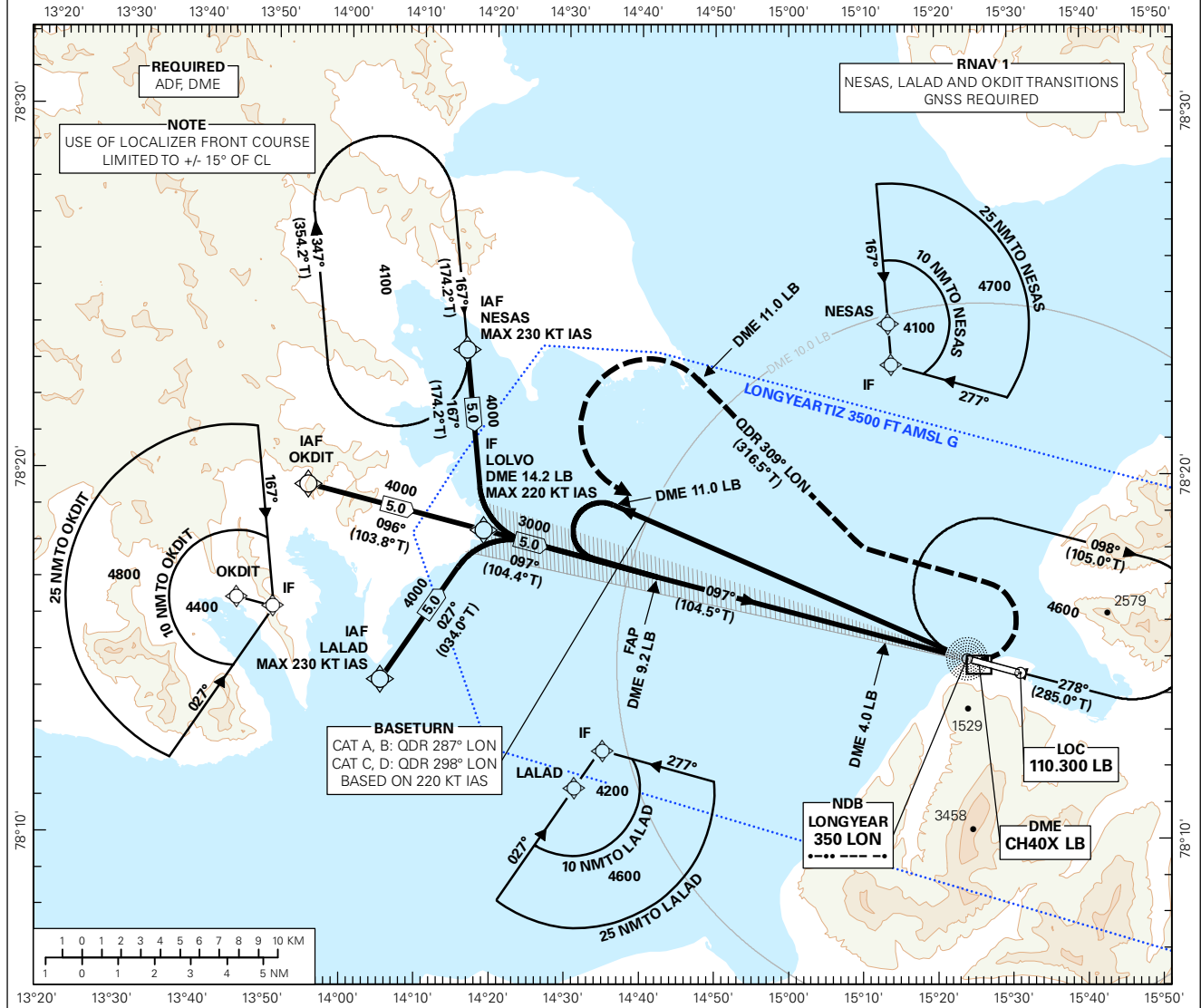


INSTRUMENT APPROACH CHART - ICAO PLAN VIEW SCALE: 1:350 000

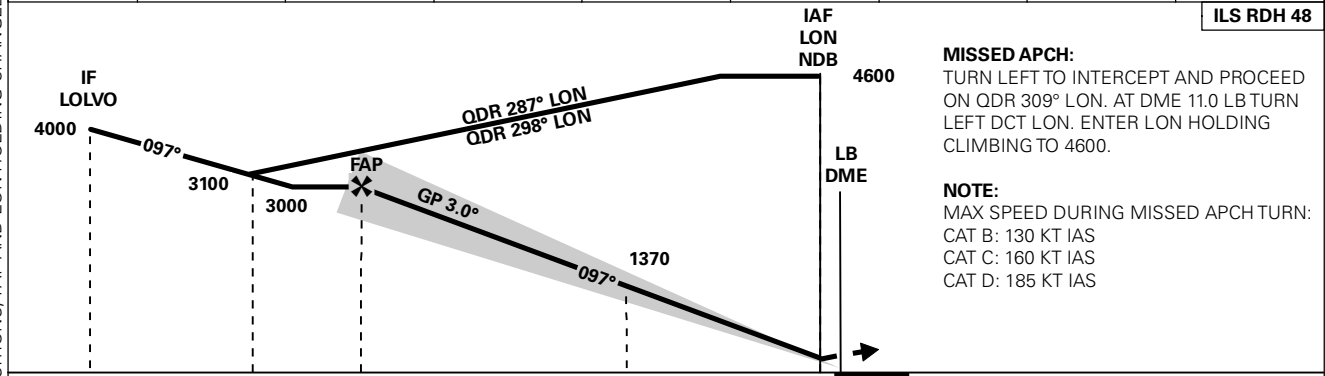
**SVALBARD
LONGYEAR
ILS RWY 10**



AFIS: 118.100 119.850	AD ELEV: 94	
VDF: 118.100	THR ELEV: 71	DIST IN NM
HGT RELATED TO THR RWY 10		ELEV, ALT AND HGT IN FT
CIRCLING HGT RELATED TO AD ELEV		
BEARINGS ARE MAGNETIC - VAR 7.5° E (2015)		
		TRANSITION ALTITUDE
		5000



DIST TO LB	9	8	7	6	5	4	3	2
ALT (HGT)	-	2685 (2614)	2355 (2282)	2025 (1953)	1695 (1625)	1370 (1298)	1045 (974)	720 (651)



CAT OF ACFT		A	B	C	D	FINAL APCH						
OCA(H) STRAIGHT - IN	CAT I	486 (415)	521 (450)	631 (560)	786 (715)	SPEED	KT	70	90	120	150	180
		-	-	-	-	TIME	MIN:SEC	-	-	-	-	-
CIRCLING		930 (836)	2040 (1946)	3560 (3466)		ROD	FT/MIN	370	480	635	795	955

NOTE: CIRCLING N OF AD ONLY.

CHANGES: RNAV TRANSITIONS, FAP AND LON HOLDING CHANGED.