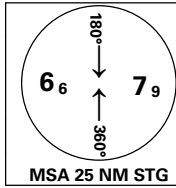


INSTRUMENT APPROACH CHART - ICAO PLAN VIEW SCALE: 1:350 000

SANDANE

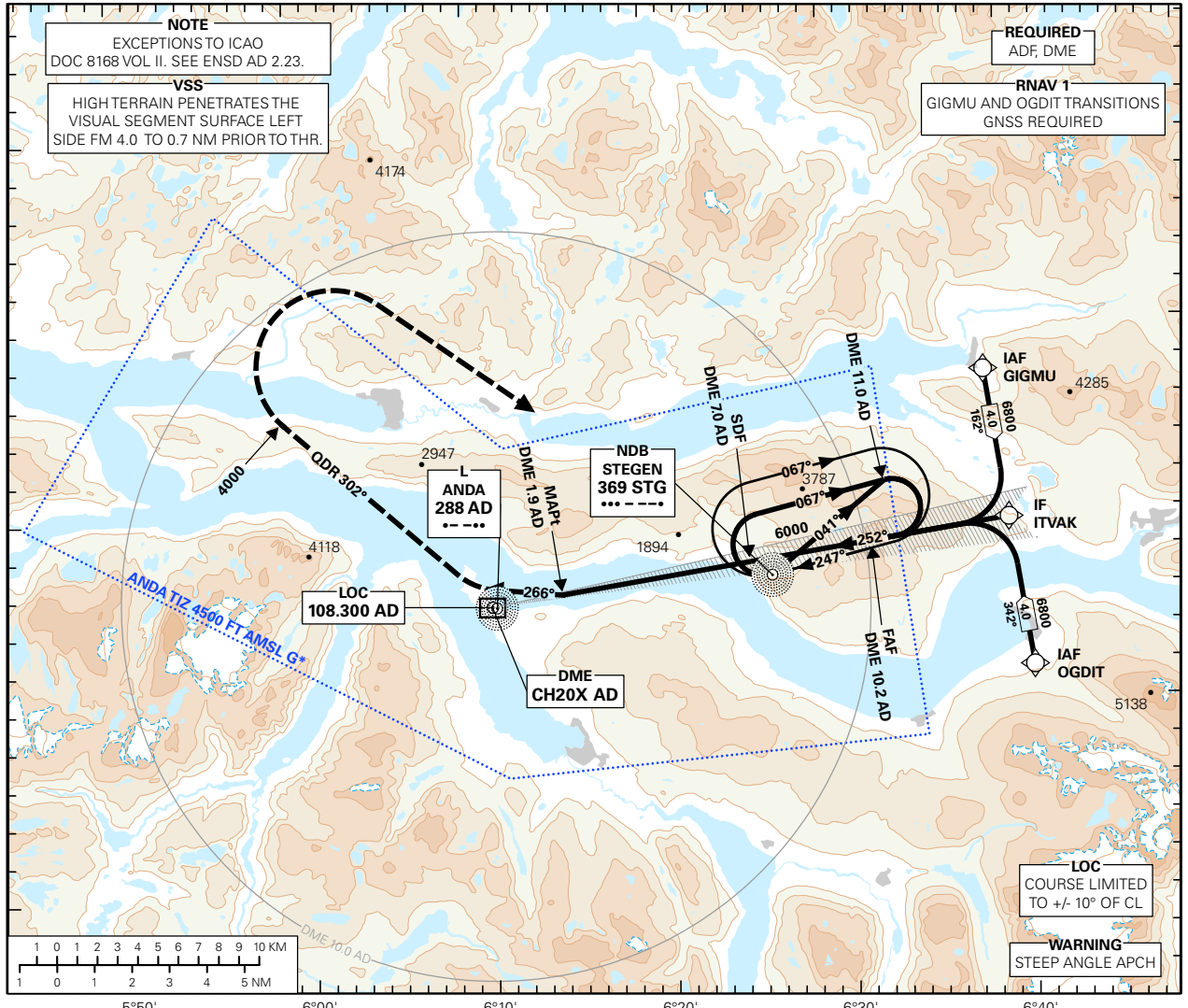
ANDA

LOC RWY 27



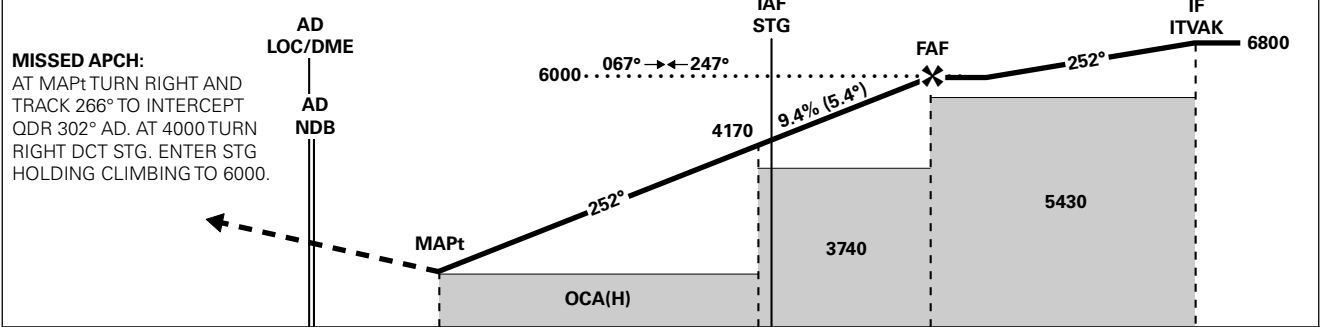
AFIS: 119.800	AERODROME ELEVATION: 196 FT	
VDF: 119.800	THR ELEVATION: 180 FT	DIST IN NM
	HGT RELATED TO THR RWY 27	ELEV, ALT AND HGT IN FT
	CIRCLING HGT RELATED TO AD ELEV	
	BEARINGS ARE MAGNETIC - VAR 0.6 ° E (2015)	

TRANSITION ALTITUDE	6000
---------------------	------



DIST TO AD	12	11	10	9	8	7	6	5
ALT (HGT)	-	-	5890 (5710)	5310 (5130)	4740 (4560)	4170 (3990)	3590 (3410)	3020 (2840)

PROCEDURE OFFSET: 12°



DME (AD)	0	1.9	7.0	10.2	14.0
THR (NM)	0	1.8	6.9	10.1	13.9
CAT OF ACFT	A	B	C	D	
OCA(H)	LOC 2.5%*	2520 (2340)	-	-	
	LOC 4.0%*	2120 (1940)	-	-	
	LOC 5.0%*	2090 (1910)	-	-	
CIRCLING	2520 (2324)	3600 (3404)	-	-	

NOTE: CIRCLING N OF AD ONLY. *MNM MISSED APCH CLIMB GRADIENT.

CHANGES: COMPLETE REVISION.