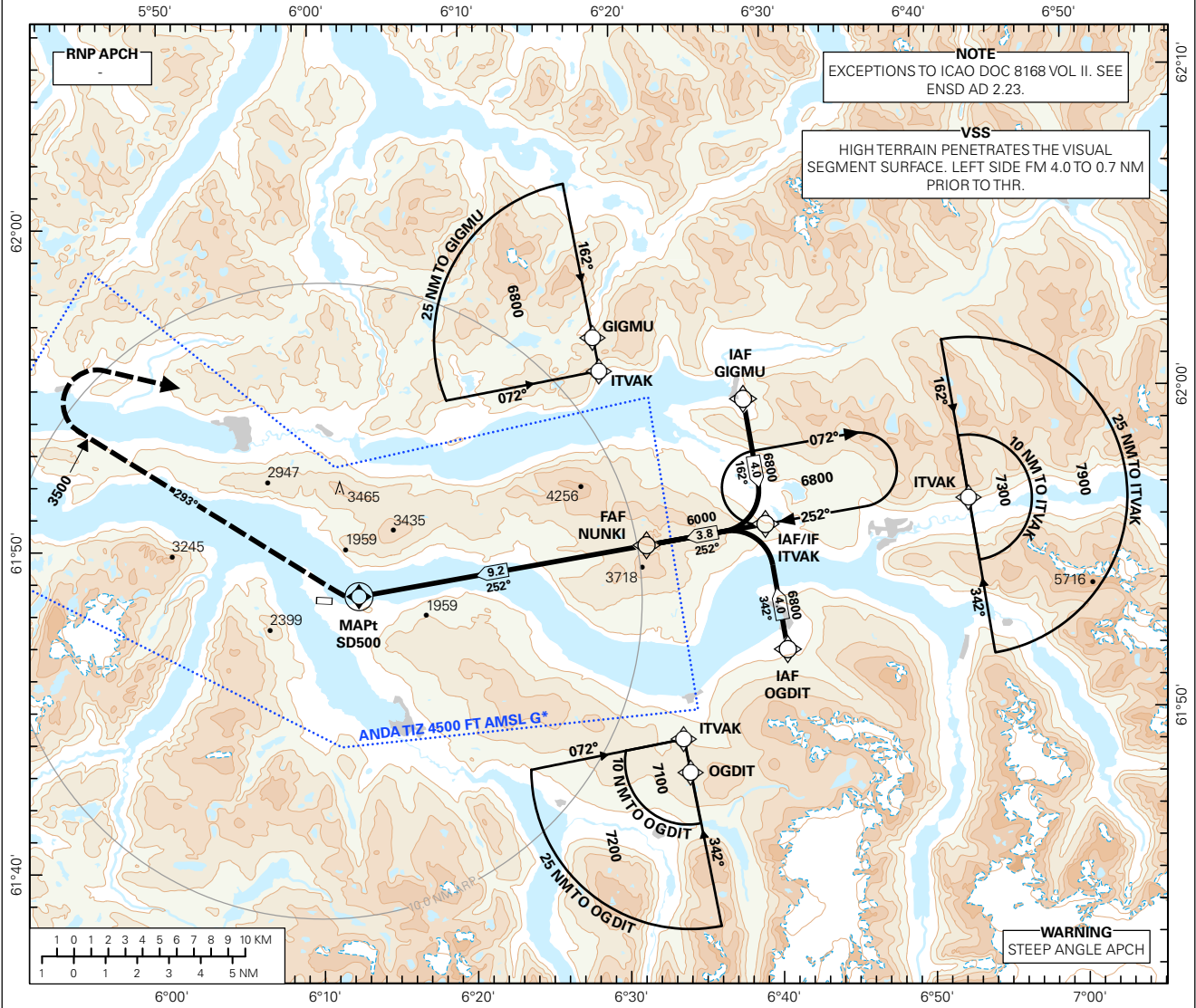


INSTRUMENT APPROACH CHART - ICAO PLAN VIEW SCALE: 1:400 000

AFIS: 119.800	AERODROME ELEVATION: 196 FT		SANDANE ANDA
	VDF: 119.800	THR ELEVATION: 180 FT	
HGT RELATED TO THR RWY 27		ELEV, ALT AND HGT IN FT	RNAV_(GNSS) RWY 27
CIRCLING HGT RELATED TO AD ELEV		TRANSITION ALTITUDE 6000	
BEARINGS ARE MAGNETIC - VAR 0.6 ° E (2015)			

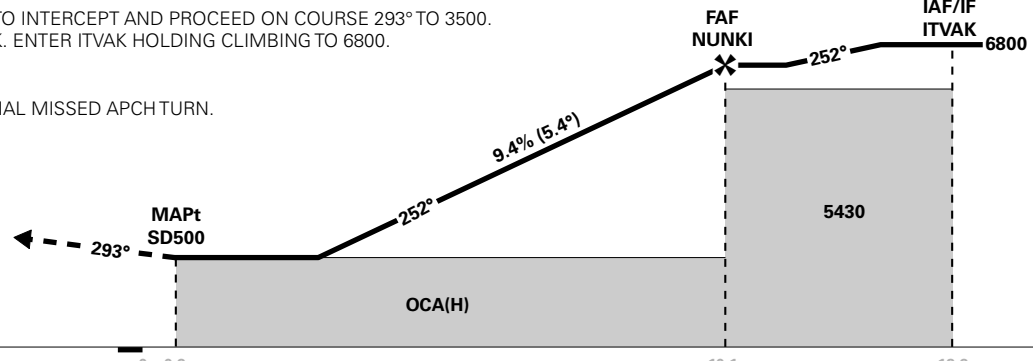


DIST TO SD500	9	8	7	6	5	4	3	2
ALT (HGT)	5900 (5720)	5330 (5150)	4750 (4570)	4180 (4000)	3610 (3430)	3030 (2850)	2460 (2280)	-

PROCEDURE OFFSET: 12°

MISSED APCH:
AT MAPt, TURN RIGHT TO INTERCEPT AND PROCEED ON COURSE 293° TO 3500.
TURN RIGHT DCT ITVAK. ENTER ITVAK HOLDING CLIMBING TO 6800.

NOTE:
MAX 130 KT IAS IN INITIAL MISSED APCH TURN.



THR (NM)	0 0.9		10.1		13.9	
CAT OF ACFT	A	B	C	D	FINAL APPROACH	DIST FM FAF - MAPt: 9.2 NM
	LNNAV 2.5%*	2590 (2410)	2610 (2430)	-		
OCA(H)	LNNAV 4.0%*	2310 (2130)	2330 (2150)	-	-	SPEED
	LNNAV 5.0%*	2120 (1940)	2150 (1970)	-	-	
STRAIGHT - IN	LNNAV 6.0%*	2020 (1840)	-	-	-	TIME
		2590 (2394)	3600 (3404)	-	-	MIN:SEC
CIRCLING						FT/MIN
						670 860 955 1150 1245

NOTE: CIRCLING N OF AD ONLY. *MNM MISSED APCH CLIMB GRADIENT.

CHANGES: NEW PROCEDURE.

RECOMMENDED RNAV PROCEDURE CODING

ENSD RNAV(GNSS) RWY 27										
Serial Number	Path Descriptor	Waypoint Identifier	Fly-over	Course °M(°T)	MAG VAR	DIST (NM)	Turn Dir	ALT (FT)	Speed (KT)	VPA/TCH
010	IF	OGDIT	-	-	-	-	-	A6800+	-	-
020	TF	ITVAK	-	342 (342.4)	-	4.0	-	A6800+	-	-
010	IF	GIGMU	-	-	-	-	-	A6800+	-	-
020	TF	ITVAK	-	162 (162.4)	-	4.0	-	A6800+	-	-
010	IF	ITVAK	-	-	-	-	-	A6800+	-	-
020	TF	NUNKI	-	252 (252.4)	-	3.8	-	A6000+	-	-
030	TF	SD500	Y	252 (252.3)	-	9.2	-	-	-	-
040	CA	-	-	293 (294.0)	-	-	-	A3500	K130-	-
050	DF	ITVAK	-	-	-	-	R	A6800	-	-
060	HM	ITVAK	-	252 (252.5)	-	1 MIN	R	A6800	-	-

Note: Recommended RNAV procedure coding is provided solely to indicate which procedure design protection areas were used in the Instrument Flight Procedure Design process.

Note: ITVAK holding not included in standard APCH transitions.