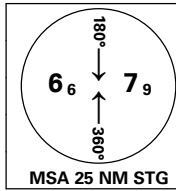


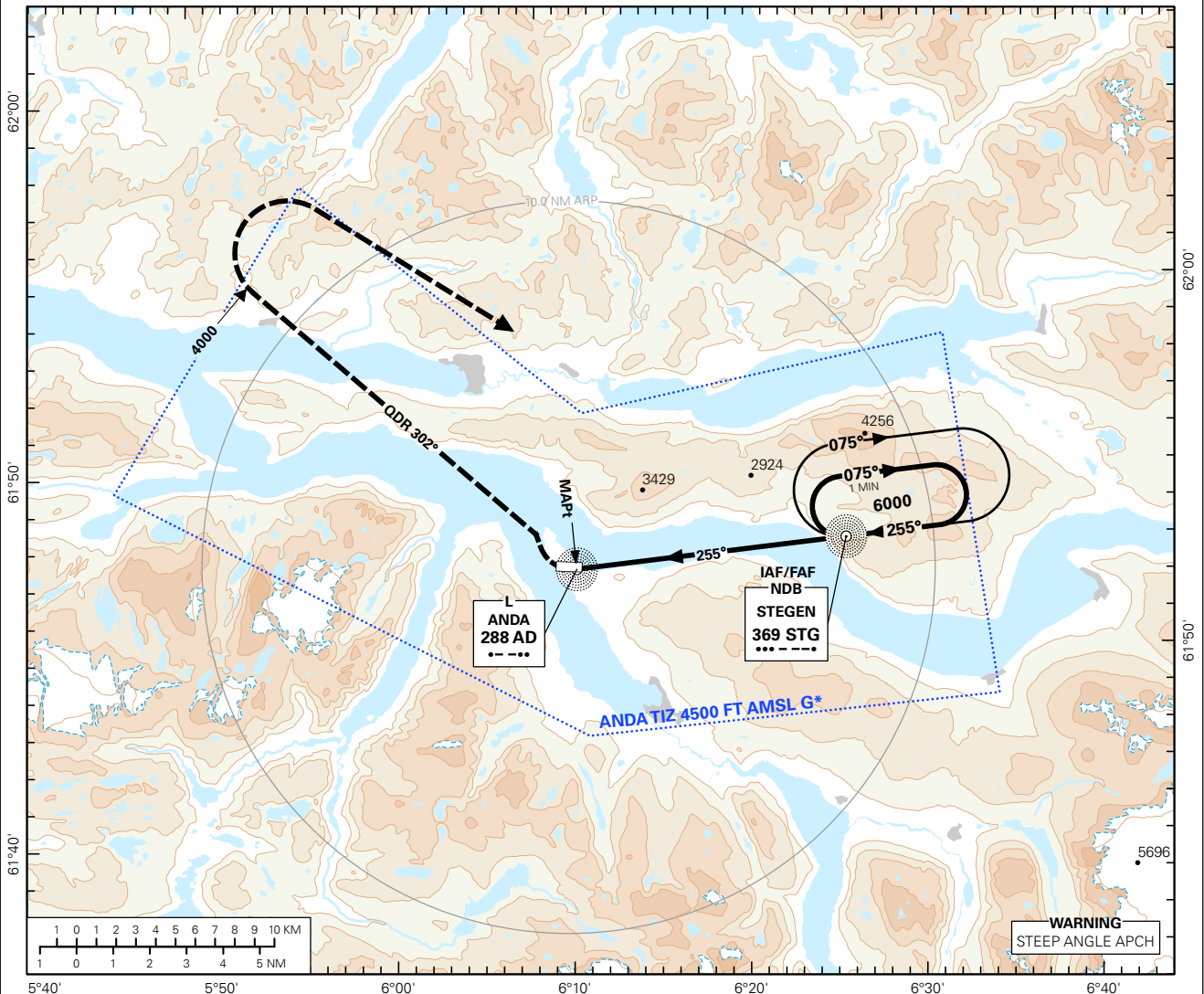
INSTRUMENT APPROACH CHART - ICAO PLAN VIEW SCALE: 1:350 000

SANDANE
ANDA
NDB-A



AFIS: 119.800	AERODROME ELEVATION: 196 FT		
VDF: 119.800	THR ELEVATION: 180 FT	DIST IN NM	
	HGT RELATED TO THR RWY 27	ELEV, ALT AND HGT IN FT	
	CIRCLING HGT RELATED TO AD ELEV		
BEARINGS ARE MAGNETIC - VAR 0.6° E (2015)			

TRANSITION ALTITUDE
6000



DIST TO AD	8	7	6	5	4	3	2	1
ALT (HGT)	-	-	-	-	-	-	-	-

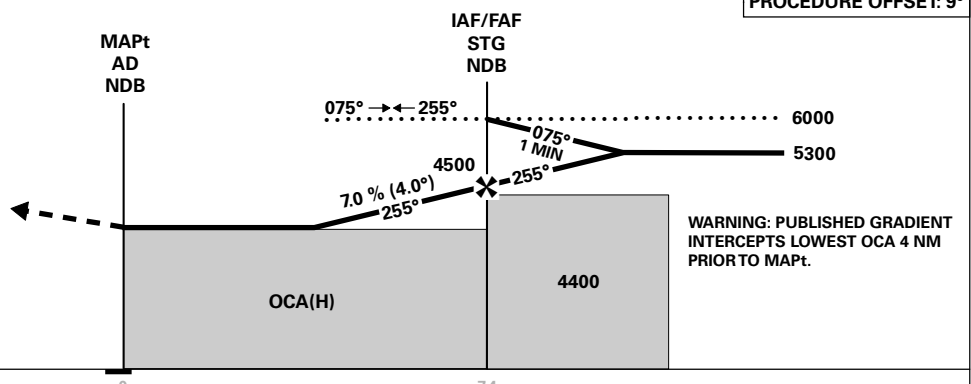
PROCEDURE OFFSET: 9°

MISSED APCH:

AT MAPt TURN RIGHT TO INTERCEPT QDR 302° AD CLIMBING TO 4000. AT 4000 TURN RIGHT DCT STG. ENTER STG HOLDING CLIMBING TO 6000.

NOTE:

MAX 130 KT IAS IN INITIAL MISSED APCH TURN.



THR (NM)	→										
CAT OF ACFT	A	B	C	D	FINAL APPROACH	DIST FM FAF: 4 NM PRIOR MAPt: 3.4 NM					
OCA(H) STRAIGHT - IN	-	-	-	-	SPEED	KT	70	90	100	120	130
CIRCLING	3070 (2874)	3600 (3404)	-	-	TIME	MIN:SEC	02:53	02:15	02:02	01:41	01:34
					ROD	FT/MIN	500	640	710	855	925

NOTE: CIRCLING N OF AD ONLY.

CHANGES: COMPLETE REVISION.