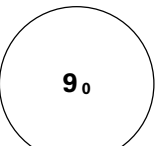
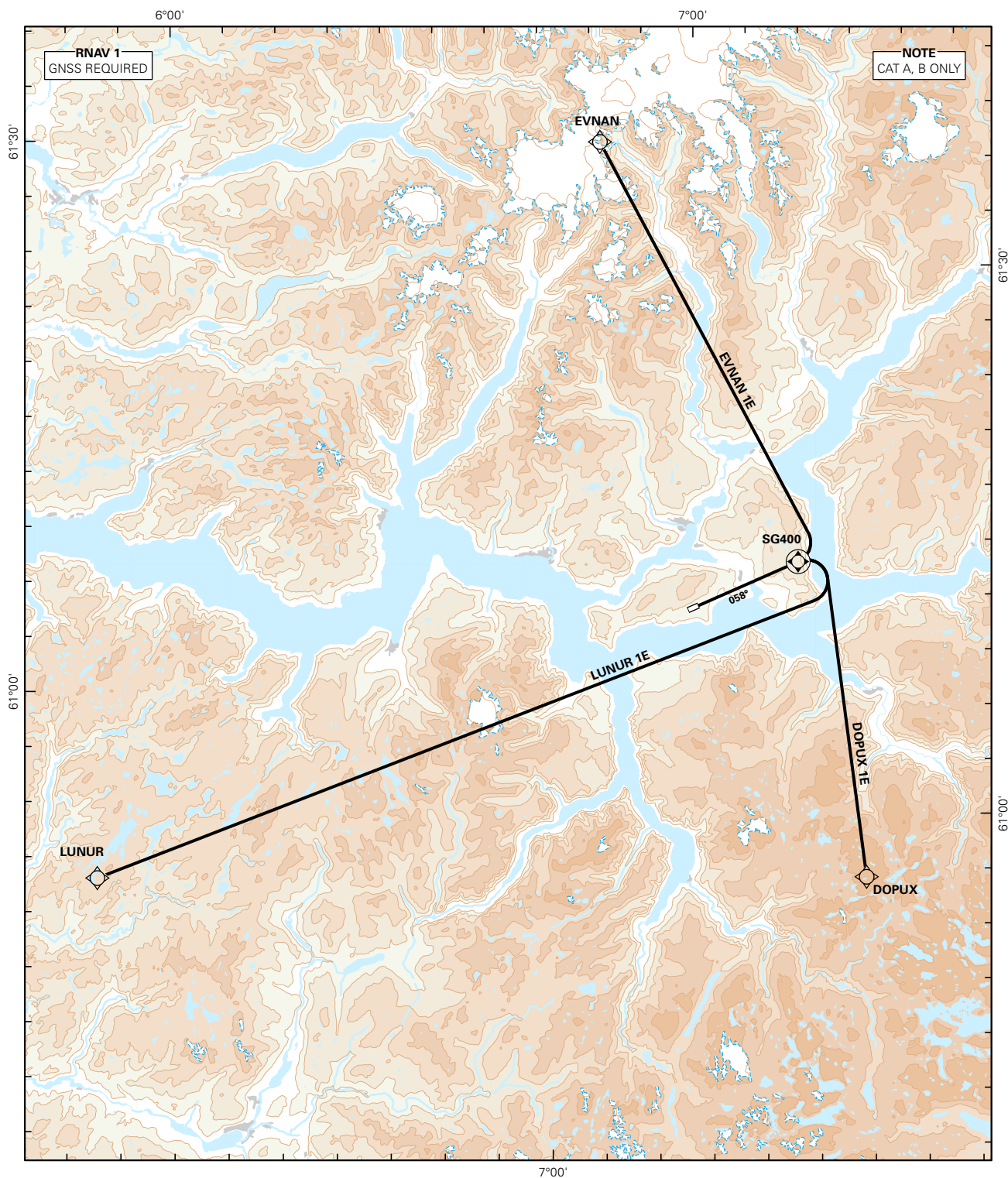


## STANDARD DEPARTURE CHART INSTRUMENT (RNAV 1 SID BASED ON GNSS)

 <b>MSA 25 NM ARP</b>	AFIS: 119.300	ALT AND ELEV ARE IN FT DIST IN NM			<b>SOGNDAL/HAUKÅSEN</b>  <b>RWY 06</b>  <b>NORWAY</b>  <b>DOPUX 1E, EVNAN 1E, LUNUR 1E</b>
	VDF: 119.300				
		1:600 000	VAR: 1.1 ° E (2015)	TA 7000	



**SID DESCRIPTION OVERLEAF**  
**DESCRIPTION OF WAYPOINTS, REF ENR 4.4**

**ATS AIRSPACE CLASSIFICATION REF ENR 1.4**  
**LEGEND: REF GEN 2.3**

**CHANGES: NEW PROCEDURES.**

**STANDARD DEPARTURE ROUTES - INSTRUMENT  
(RNAV 1 SID BASED ON GNSS)**
**SOGNDAL/Haukåsen  
RWY 06**
**REMARKS:** CAT A, B only.

**GENERAL:** Class A GNSS shall not be used.

**RADIO COMMUNICATION FAILURE:** Squawk A7600. Maintain last assigned level for 2 minutes, then climb to CPL cruising LVL. Aircraft under vectoring shall, after set transponder to A 7600, proceed in the most direct manner possible to rejoin the CPL route no later than the next significant point, climbing to the CPL cruising LVL taking into consideration the applicable MNM flight ALT.

**CLOSE-IN OBSTACLES:** Rising terrain, N of extended RWY CL up to 0.4 NM from RWY 24, requires more than 8.0% climb gradient, and must be avoided visually or by other means.

**ATC CLEARANCE:** Departing IFR flights shall obtain ATC clearance from SOGNDAL INFORMATION.

**NON RNAV 1 ACFT:** No instrument departures available.

DESIGNATOR	ROUTE	RESTRICTIONS	CLIMB TO	CONTACT
<b>DOPUX 1E</b> (DOPUX ONE ECHO DEPARTURE)	To SG400 on course 058°. Turn right DCT DOPUX.	MNM climb gradient 7.2% (437 FT/NM) to 5300 FT.  If unable to comply, inform ATS.	FL 120	As instructed by SOGNDAL INFORMATION.
<b>EVNAN 1E</b> (EVNAN ONE ECHO DEPARTURE)	To SG400 on course 058°. Turn left DCT EVNAN.	MNM climb gradient 7.2% (437 FT/NM) to 5300 FT.  If unable to comply, inform ATS.	FL 100	As instructed by SOGNDAL INFORMATION.
<b>LUNUR 1E</b> (LUNUR ONE ECHO DEPARTURE)	To SG400 on course 058°. Turn right DCT LUNUR.	MNM climb gradient 8.0% (486 FT/NM) to 6700 FT.  If unable to comply, inform ATS.	FL 100	As instructed by SOGNDAL INFORMATION.