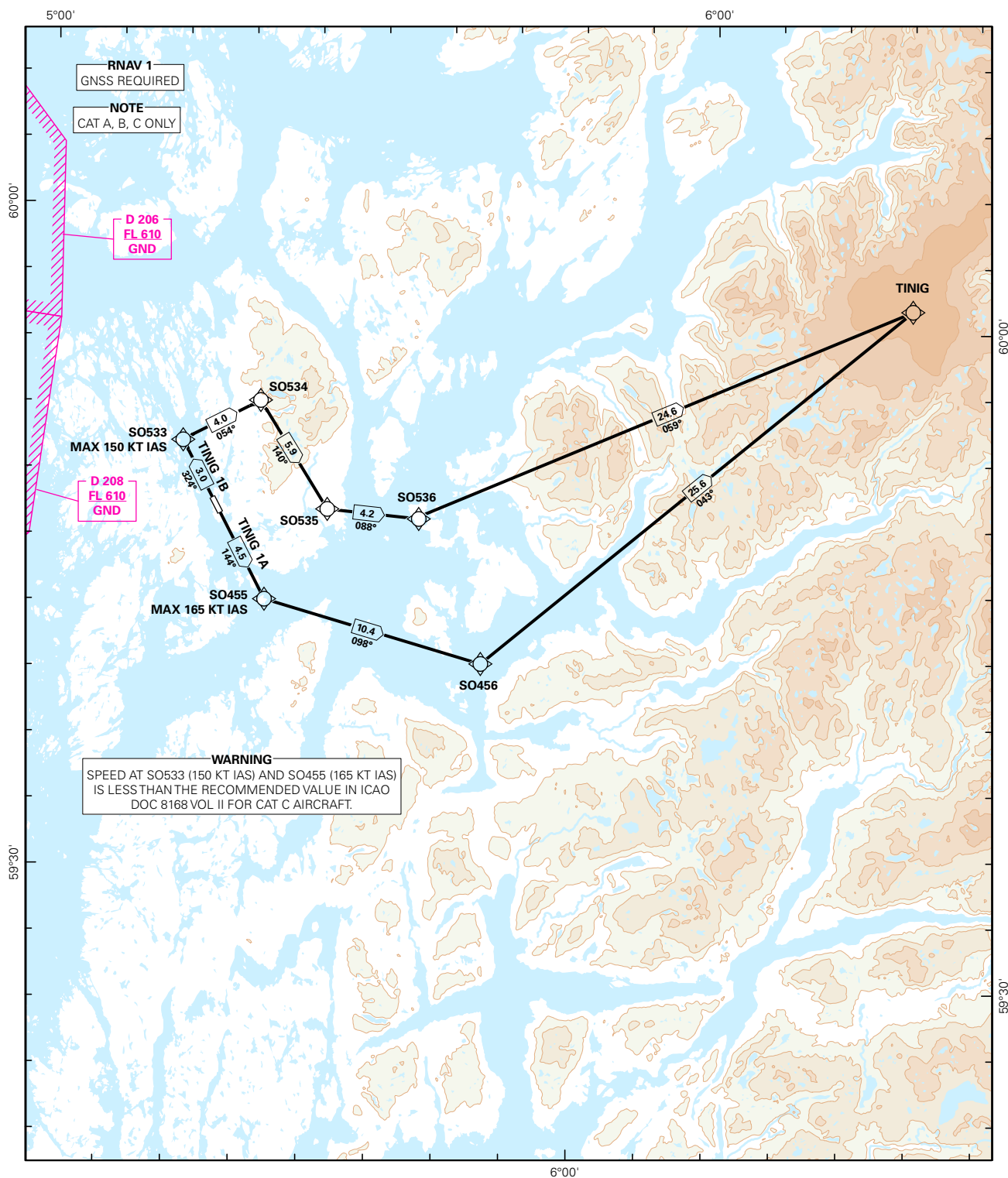


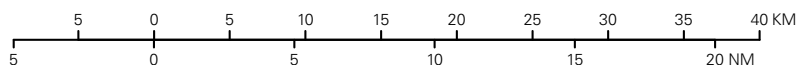
STANDARD DEPARTURE CHART INSTRUMENT (RNAV 1 SID BASED ON GNSS)

<div><div>5₉</div><div>MSA 25 NM ARP</div></div>	FLESLAND APP: 121.000		ALT AND ELEV ARE IN FT DIST IN NM			STORD/SØRSTOKKEN RWY 14/32 NORWAY TINIG 1A, TINIG 1B	
	AFIS: 120.200						
	VDF: 120.200						
			1:500 000			VAR: 0.4 ° E (2015)	TA 7000



SID DESCRIPTION OVERLEAF
DESCRIPTION OF WAYPOINTS, REF ENR 4.4

ATS AIRSPACE CLASSIFICATIONS: REF ENR 1.4
LEGEND: REF GEN 2.3



CHANGES: NEW PROCEDURES.

**STANDARD DEPARTURE ROUTES - INSTRUMENT
(RNAV 1 SID BASED ON GNSS)**
**STORD/Sørstokken
RWY 14/32**

GENERAL:	Class A GNSS shall not be used. Surveillance service shall be available.
RADIO COMMUNICATION FAILURE:	Squawk A7600. Maintain last assigned level until passing limits as described in "CLIMB TO" table for each individual SID (e.g. SO456 for TINIG 1A), then climb to CPL cruising LVL. Aircraft under vectoring shall, after set transponder to A7600, proceed in the most direct manner possible to rejoin the CPL route no later than the next significant point, climbing to the CPL cruising LVL taking into consideration the applicable MNM flight ALT.
CLOSE-IN OBSTACLES:	Obstacle 500 m South, and raising terrain 0.7 NM – 1.0 NM South-East of THR RWY 32, require more than 7.6% climb gradient, and must be avoided visually or by other means.
VECTORIZING/ DIRECT ROUTING:	When being vectored or cleared for DCT routing, the climb gradient(s) stated in SID "RESTRICTIONS"-table apply.
NON RNAV 1 ACFT:	At first contact with SØRSTOKKEN INFORMATION state "UNABLE RNAV 1 DUE (reason)". OMNI-DIRECTIONAL DEPARTURE available (see ENSO AD 2.24).

RWY 14

DESIGNATOR	ROUTE	RESTRICTIONS	CLIMB TO	CONTACT
TINIG 1A (TINIG ONE ALFA DEPARTURE)	Climb to SO455 on course 144°, to SO456, to TINIG.	MNM climb gradient 4.5% (273 FT/NM) to 3000 FT. If unable to comply, inform ATC.	4000 FT. RCF: If no further climb received prior to SO456, climb to CPL cruising LVL.	When airborne, contact FLESLAND APPROACH 121.000 MHZ

RWY 32

DESIGNATOR	ROUTE	RESTRICTIONS	CLIMB TO	CONTACT
TINIG 1B (TINIG ONE BRAVO DEPARTURE)	Climb to SO533 on course 324°, turn right to SO534, to SO535, to SO536, to TINIG.	MNM climb gradient 7.6% (461 FT/NM) to 4000 FT. MAX 150 KT IAS during first turn. If unable to comply, inform ATC.	4000 FT. RCF: If no further climb received prior to SO536, climb to CPL cruising LVL.	When airborne, contact FLESLAND APPROACH 121.000 MHZ