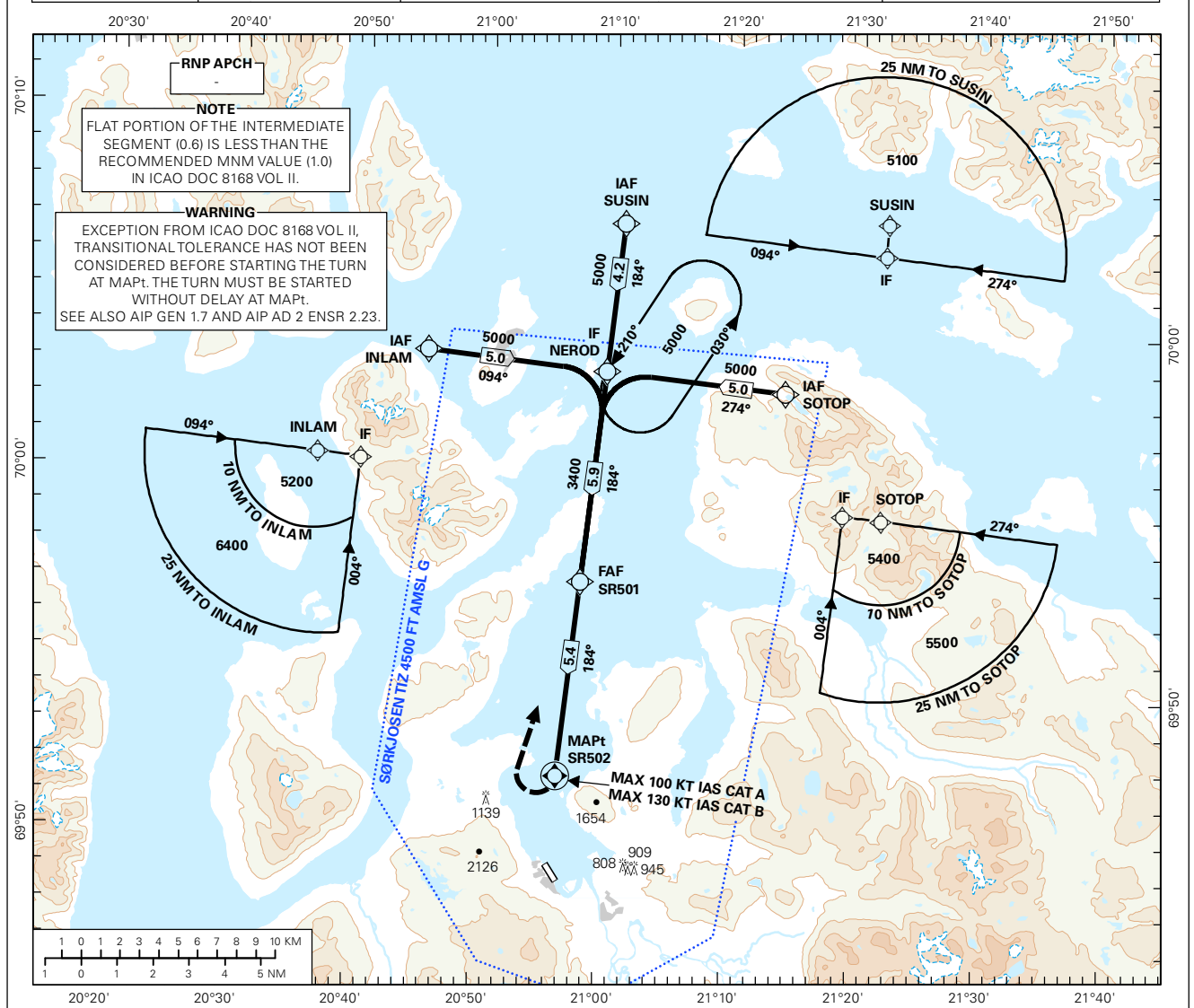


INSTRUMENT APPROACH CHART - ICAO PLAN VIEW SCALE: 1:350 000

AFIS: 119.600	AD ELEV: 16	DIST IN NM	SØRKJOSEN SØRKJOSEN RNAV(GNSS)-A
	VDF: 119.600		
CIRCLING HGT RELATED TO AD ELEV			TRANSITION ALTITUDE
BEARINGS ARE MAGNETIC - VAR 9.2 ° E (2015)			7000

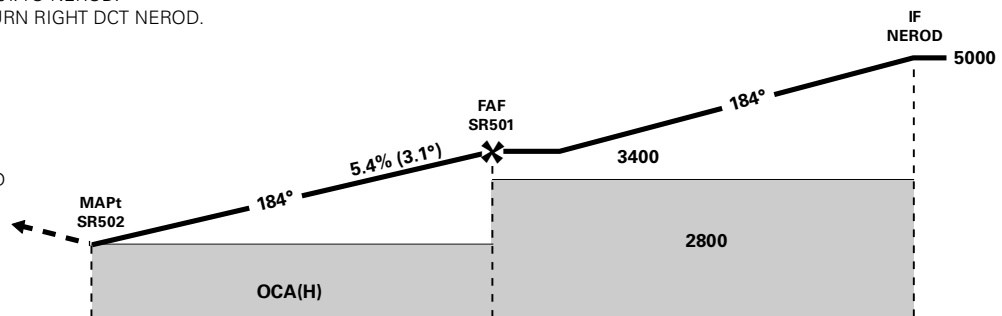


DIST TO SR502	8	7	6	5	4	3	2	1
ALT (HGT)	-	-	-	3260 (3244)	2930 (2914)	2600 (2584)	2270 (2254)	1940 (1924)

MISSED APCH:
 IMMEDIATE RIGHT TURN DCT SR501. TO NEROD.
 CLIMB ON TRACK 004° TO 5000. TURN RIGHT DCT NEROD.
 ENTER NEROD HLDG AT 5000.

NOTE:
 DURING INITIAL TURN:
 CAT A: MAX 100 KT IAS
 CAT B: MAX 130 KT IAS

DESCENT GRADIENT CALCULATED
 FM FAF TO MAPt.



SR502 →		0	5.4	11.3								
CAT OF ACFT	A	B	C	D	FINAL APCH	DIST FAF - MAPt: 5.4						
	OCA(H)	-	-	-			-					
STRAIGHT - IN	2.5%*	1650 (1634)	1920 (1904)	-	-	SPEED	KT	70	90	100	120	130
CIRCLING	4.0%*	1620 (1604)	1720 (1704)**	-	-	TIME	MIN:SEC	04:41	03:38	03:17	02:44	02:31
	5.0%*	1610 (1594)	1610 (1594)**	-	-	ROD	FT/MIN	385	495	550	660	715

NOTE: CIRCLING NE OF AD ONLY. *MNM MISSED APCH CLIMB GRADIENT. **AUTH REQUIRED: 120KT/25° BANK WHILE CIRCLING.

CHANGES: NEW PROCEDURE.

RECOMMENDED RNAV PROCEDURE CODING

ENSR RNAV(GNSS) - A										
Serial Number	Path Descriptor	Waypoint Identifier	Fly-over	Course °M(°T)	MAG VAR	DIST (NM)	Turn Dir	ALT (FT)	Speed (KT)	VPA/TCH
010	IF	INLAM	-	-	-	-	-	A5000+	-	-
020	TF	NEROD	-	-	-	5.0	-	A5000+	-	-
010	IF	SOTOP	-	-	-	-	-	A5000+	-	-
020	TF	NEROD	-	-	-	5.0	-	A5000+	-	-
010	IF	SUSIN	-	-	-	-	-	A5000+	-	-
020	TF	NEROD	-	-	-	4.2	-	A5000+	-	-
030	TF	SR501	-	-	-	5.9	-	A3400+	-	-
040	TF	SR502	Y	-	-	5.4	-	-	-	-
050	DF	SR501	-	-	-	-	R	A5000	-	-
060	TF	NEROD	-	-	-	5.9	-	A5000	-	-
070	CA	-	-	004 (013.1)	-	-	-	A5000	-	-
080	DF	NEROD	-	-	-	-	R	A5000	-	-
090	HM	NEROD	-	210 (219.2)	-	1 MIN	L	A5000+	-	-

Note: Recommended RNAV procedure coding is based on ARINC 424-15 and is provided solely to indicate which procedure design protection areas were used in the Instrument Flight Procedure Design process.

Note: NEROD holding not included in standard APCH transitions.