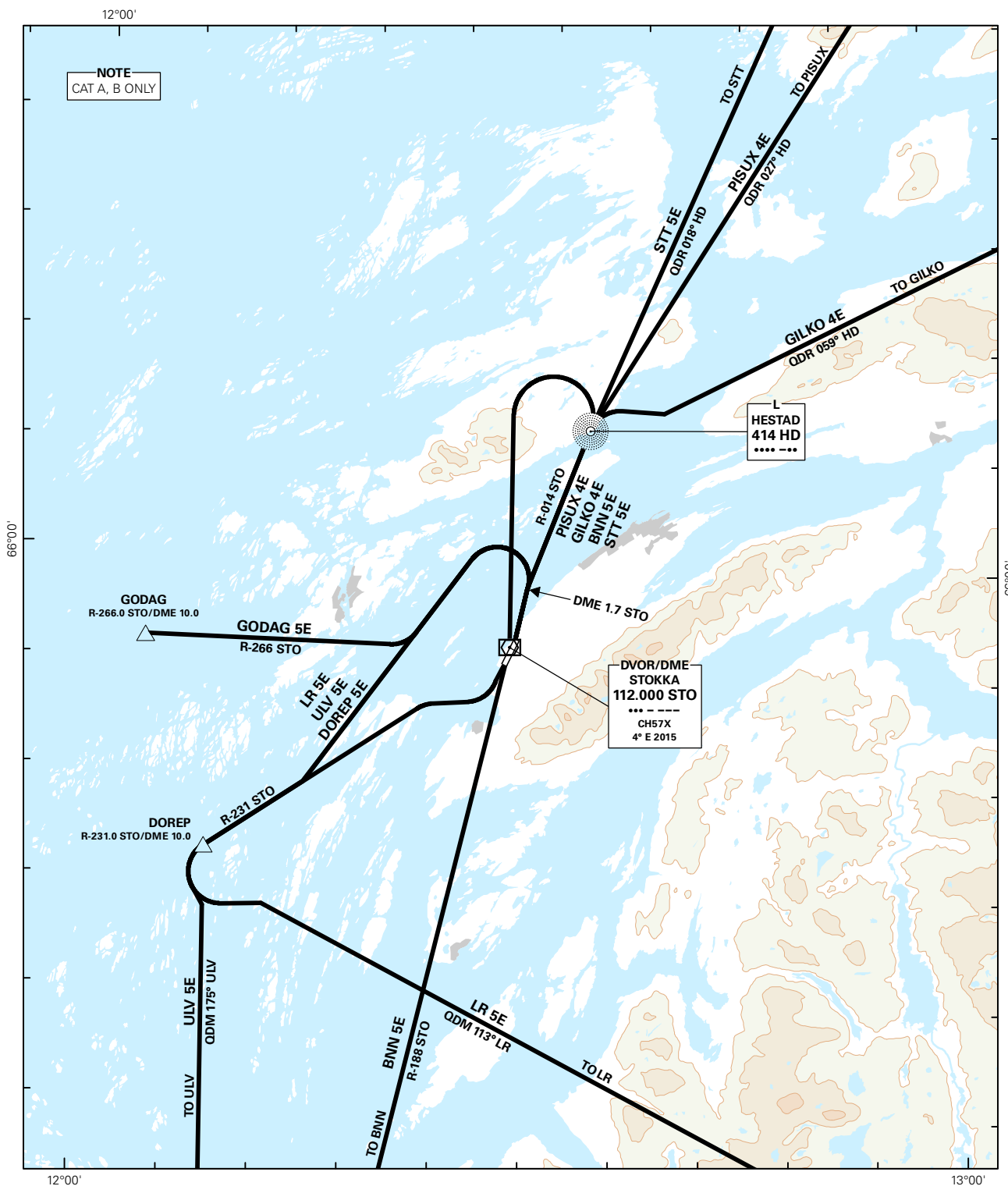


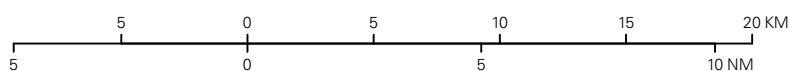
STANDARD DEPARTURE CHART INSTRUMENT - ICAO

<p>MSA 25 NM STO</p>	APP: 127.900	ALT AND ELEV ARE IN FT DIST IN NM		SANDNESSJØEN/STOKKA RWY 02 NORWAY
	AFIS: 120.300			
	VDF: 120.300			
	1:300 000	VAR: 3.8 ° E (2015)	TA 7000	
BNN 5E, DOREP 5E, GILKO 4E, GODAG 5E, LR 5E, PISUX 4E, STT 5E, ULV 5E				



SID DESCRIPTION OVERLEAF
DESCRIPTION OF WAYPOINTS, REF ENR 4.4

ATS AIRSPACE CLASSIFICATIONS: REF ENR 1.4
LEGEND: REF GEN 2.3



CHANGES: RWY ID.

Avinor

15 SEP 2016

STANDARD DEPARTURE ROUTES - INSTRUMENT**SANDNESSJØEN/Stokka
RWY 02****REMARKS:** CAT A, B only.**GENERAL:** Procedures are based on maximum 165 KT IAS in turns. No track adjustment or turn before departure end of RWY.**RADIO COMMUNICATION FAILURE:** Squawk 7600. In case of RCF after take-off, ACFT shall maintain last cleared and acknowledged level until passing DME 15.0 STO. For LR 5E, DEP ACFT shall maintain last cleared and acknowledged level until passing DME 15.0 STO or R-188 STO (whichever occurs first). Then climb to the cruising level stated in the CPL, and proceed the most direct route to the cleared ATS route. ACFT under vectoring shall, after set transponder to 7600, continue on heading last cleared and acknowledged for 2 minutes, then proceed the most direct route to join the cleared ATS route.**CLOSE-IN OBSTACLES:** Close-in obstacle (hill) exists, NE and 650 M FM departure end of RWY, 250 FT AMSL.**VECTORING:** Vectoring involving deviation from SID may be used by HELGELAND APPROACH to expedite outbound traffic.

DESIGNATOR	ROUTE	RESTRICTIONS	CLIMB TO	CONTACT
BNN 5E (BRØNNØY FIVE ECHO DEPARTURE)	Turn left to intercept and proceed on R-014 STO to HD. At HD, turn left DCT STO. From STO, follow R-188 STO to BNN.	A MNM climb gradient of 8.1% (492 FT/NM) is required until passing HD.	5000 FT	As instructed by STOKKA INFORMATION
DOREP 5E (DOREP FIVE ECHO DEPARTURE)	After TKOF, make a left track adjustment to 006°. At DME 1.7 STO, turn left to intercept and proceed on R-231 STO to DOREP.	A MNM climb gradient of 8.1% (492 FT/NM) is required until passing DOREP.	3000 FT	As instructed by STOKKA INFORMATION
GILKO 4E (GILKO FOUR ECHO DEPARTURE)	Turn left to intercept and proceed on R-014 STO to HD. At HD, turn right and proceed on QDR 059° HD to GILKO.	A MNM climb gradient of 8.1% (492 FT/NM) is required until passing HD. After passing HD, a MNM climb gradient of 3.7% (225 FT/NM) is required to 5000FT.	5000 FT	As instructed by STOKKA INFORMATION
GODAG 5E (GODAG FIVE ECHO DEPARTURE)	After TKOF, make a left track adjustment to 006°. At DME 1.7 STO, turn left to intercept and proceed on R-266 STO to GODAG.	A MNM climb gradient of 8.1% (492 FT/NM) is required until passing GODAG.	4000 FT	As instructed by STOKKA INFORMATION
LR 5E (LAKSFORS FIVE ECHO DEPARTURE)	After TKOF, make a left track adjustment to 006°. At DME 1.7 STO, turn left to intercept and proceed on R-231 STO to DOREP. At DOREP, turn left to intercept and follow QDM 113° LR to LR.	A MNM climb gradient of 8.1% (492 FT/NM) is required until passing DOREP.	6000 FT	As instructed by STOKKA INFORMATION
PISUX 4E (PISUX FOUR ECHO DEPARTURE)	Turn left to intercept and proceed on R-014 STO to HD. At HD, turn right and proceed on QDR 026° HD to PISUX.	A MNM climb gradient of 8.1% (492 FT/NM) is required until passing HD.	6000 FT	As instructed by STOKKA INFORMATION
STT 5E (STØTT FIVE ECHO DEPARTURE)	Turn left to intercept and proceed on R-014 STO to HD. At HD, turn right and proceed on QDR 018° HD to STT.	A MNM climb gradient of 8.1% (492 FT/NM) is required until passing HD.	5000 FT	As instructed by STOKKA INFORMATION
ULV 5E (ULVINGEN FIVE ECHO DEPARTURE)	After TKOF, make a left track adjustment to 006°. At DME 1.7 STO, turn left to intercept and proceed on R-231 STO to DOREP. At DOREP, turn left to intercept and follow QDM 175° ULV to ULV.	A MNM climb gradient of 8.1% (492 FT/NM) is required until passing DOREP.	3000 FT	As instructed by STOKKA INFORMATION