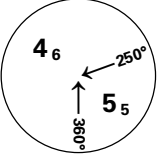
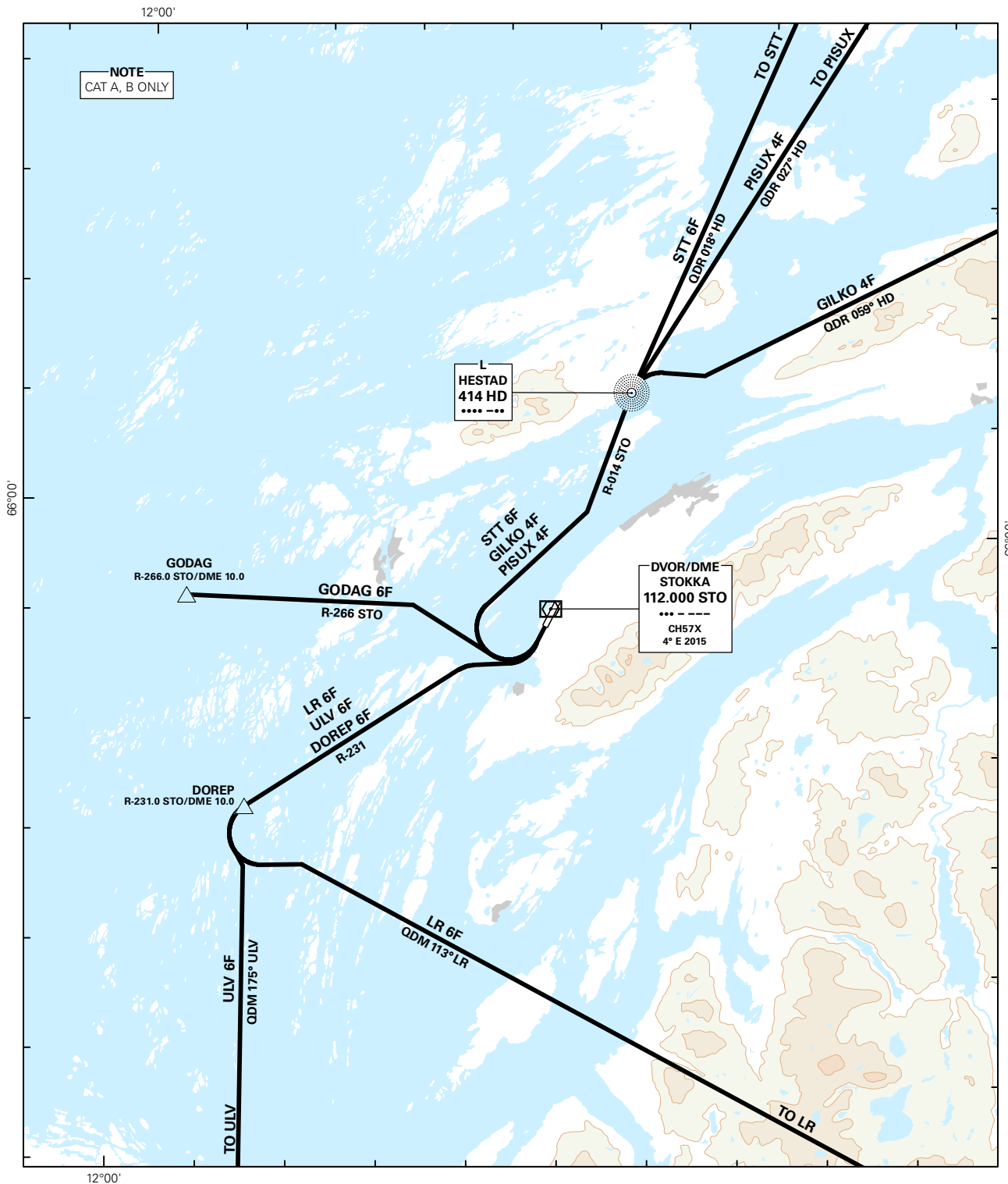
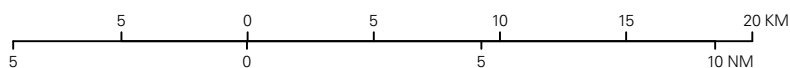


STANDARD DEPARTURE CHART INSTRUMENT - ICAO

 <p>MSA 25 NM STO</p>	APP: 127.900	ALT AND ELEV ARE IN FT DIST IN NM		SANDNESSJØEN/STOKKA RWY 20 NORWAY	
	AFIS: 120.300				
	VDF: 120.300				
		1:300 000	VAR: 3.8 ° E (2015)	TA 7000	DOREP 6F, GILKO 4F, GODAG 6F, LR 6F, PISUX 4F, STT 6F, ULV 6F



CHANGES: RWY ID.

SID DESCRIPTION OVERLEAF
DESCRIPTION OF WAYPOINTS, REF ENR 4.4ATS AIRSPACE CLASSIFICATIONS: REF ENR 1.4
LEGEND: REF GEN 2.3

STANDARD DEPARTURE CHART - INSTRUMENT**SANDNESSJØEN/Stokka
RWY 20****REMARKS** CAT A,B only.**GENERAL:** Procedures are based on maximum 165 KT IAS in turns. No track adjustment or turn before departure end of RWY.**VECTORIZING :** Vectoring involving deviation from SID may be used by HELGELAND APPROACH to expedite outbound traffic.**RADIO COMMUNICATION FAILURE:** Squawk 7600. In case of RCF after take-off, ACFT shall maintain last cleared and acknowledged level until passing DME 15.0 STO. For LR 6F DEP ACFT shall maintain last cleared and acknowledged level until passing DME 15.0 STO or R-189 STO (whichever occurs first). Then climb to the cruising level stated in the CPL, and proceed the most direct route to the cleared ATS route. ACFT under vectoring shall, after set transponder to 7600, continue on heading last cleared and acknowledged for 2 minutes, then proceed the most direct route to join the cleared ATS route.**CLOSE-IN OBSTACLES:** Close-in obstacle exists, SE and 500 M FM departure end of RWY, 217 FT AMSL.**NOTE:** THR 02 is considered to be departure end of RWY 20.

DESIGNATOR	ROUTE	RESTRICTIONS	CLIMB TO	CONTACT
DOREP 6F (DOREP SIX FOXTROT DEPARTURE)	Climb on R-201 STO to DME 1.0 or 400 FT – whichever is later. Turn right to intercept and climb on R-231 STO to DOREP.	A MNM climb gradient of 7.0% i.e. 426 FT/NM is required until passing DOREP.	3000 FT	As instructed by STOKKA INFORMATION
GILKO 4F (GILKO FOUR FOXTROT DEPARTURE)	Climb on R-201 STO to DME 1.0 or 400 FT – whichever is later. Turn right to intercept and climb on R-014 STO to HD. At HD turn right and proceed on QDR 059° HD to GILKO.	A MNM climb gradient of 7.0% i.e. 426 FT/NM is required until passing HD.	5000 FT	As instructed by STOKKA INFORMATION
GODAG 6F (GODAG SIX FOXTROT DEPARTURE)	Climb on R-201 STO to DME 1.0 or 400 FT – whichever is later. Turn right to intercept and climb on R-266 STO to GODAG.	A MNM climb gradient of 7.0% i.e. 426 FT/NM is required until passing GODAG.	4000 FT	As instructed by STOKKA INFORMATION
LR 6F (LAKSFORS SIX FOXTROT DEPARTURE)	Climb on R-201 STO to DME 1.0 or 400 FT – whichever is later. Turn right to intercept and climb on R-231 STO to DOREP. Turn left to intercept and follow QDM 113° LR to LR.	A MNM climb gradient of 7.0% i.e. 426 FT/NM is required until passing DOREP.	6000 FT	As instructed by STOKKA INFORMATION
PISUX 4F (PISUX FOUR FOXTROT DEPARTURE)	Climb on R-201 STO to DME 1.0 or 400 FT – whichever is later. Turn right to intercept and climb on R-014 STO to HD. At HD turn right and proceed on QDR 027° HD to PISUX.	A MNM climb gradient of 7.0% i.e. 426 FT/NM is required until passing HD.	6000 FT	As instructed by STOKKA INFORMATION
STT 6F (STØTT SIX FOXTROT DEPARTURE)	Climb on R-201 STO to DME 1.0 or 400 FT – whichever is later. Turn right to intercept and climb on R-014 STO to HD. At HD turn right and proceed on QDR 018° HD to STT.	A MNM climb gradient of 7.0% i.e. 426 FT/NM is required until passing HD.	5000 FT	As instructed by STOKKA INFORMATION
ULV 6F (ULVINGEN SIX FOXTROT DEPARTURE)	Climb on R-201 STO to DME 1.0 or 400 FT – whichever is later. Turn right to intercept and climb on R-231 STO to DOREP. At DOREP turn left and proceed on QDM 175° ULV to ULV.	A MNM climb gradient of 7.0% i.e. 426 FT/NM is required until passing DOREP.	3000 FT	As instructed by STOKKA INFORMATION