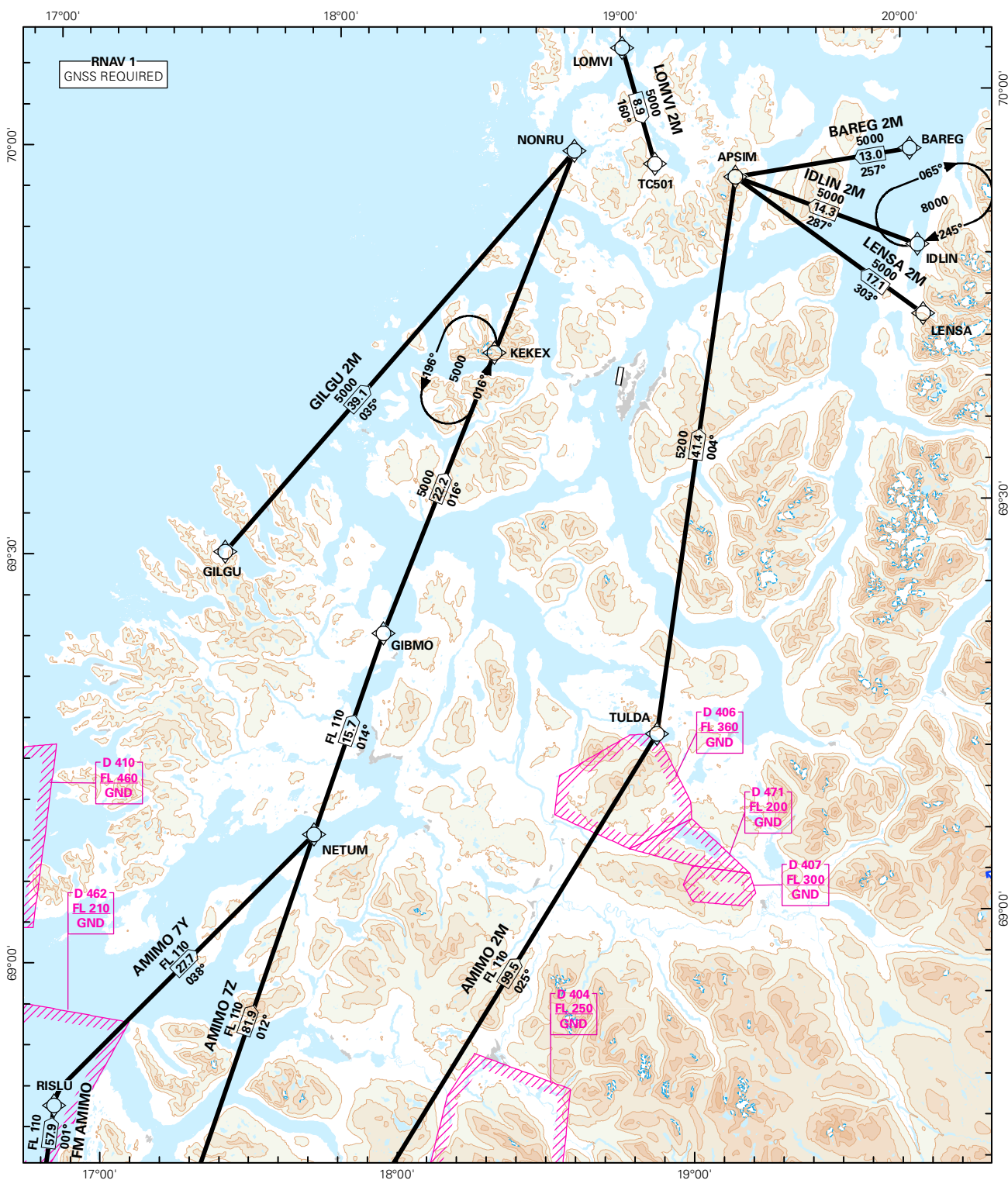


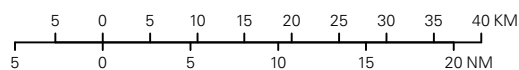
STANDARD ARRIVAL CHART INSTRUMENT (RNAV 1 STAR BASED ON GNSS)

<div style="border: 1px solid black; border-radius: 50%; width: 60px; height: 60px; display: flex; align-items: center; justify-content: center; margin: 0 auto;">7₁</div> <div style="text-align: center; margin-top: 5px;">MSA 25 NM ARP</div>	ATIS: 126.125	ALT AND ELEV ARE IN FT DIST IN NM		TROMSØ/LANGNES	
	APP: 123.750				
	TWR: 118.300 (122.100)				
	VDF: 123.750				
		1:800 000	VAR: 8.0 ° E (2015)	TA 7000	RWY 19
		AMIMO 2M, AMIMO 7Y, AMIMO 7Z, BAREG 2M, GILGU 2M, IDLIN 2M, LENSEA 2M, LOMVI 2M			



STAR DESCRIPTION OVERLEAF
DESCRIPTION OF WAYPOINTS, REF ENR 4.4

ATS AIRSPACE CLASSIFICATIONS: REF ENR 1.4
LEGEND: REF GEN 2.3



CHANGES: AMIMO 2M, AMIMO 7Y, AMIMO 7Z, BAREG 2M, GILGU 2M, IDLIN 2M, LENSEA 2M, LOMVI 2M.

**STANDARD ARRIVAL ROUTES - INSTRUMENT
(RNAV 1 STAR BASED ON GNSS)**
**Tromsø/Langnes
RWY 19**

GENERAL: Class A GNSS shall not be used.
Surveillance service shall be available.

LOSS OF RNAV 1 CAPABILITY: Request vectoring.

VECTORIZING: Vectoring may be used for sequencing to final when necessary.

RADIO COMMUNICATION FAILURE: Squawk A7600. Proceed on STAR and make APCH to RWY 19 without delay.

DESIGNATOR	ROUTE	RESTRICTIONS	DESCEND	CLEARANCE LIMIT
AMIMO 2M (AMIMO TWO MIKE ARRIVAL)	FM AMIMO to TULDA, TO APSIM.	Cross AMIMO at FL110 or above. Cross TULDA at FL110 or above. Cross APSIM at 5000 FT or above.	As cleared by ATC.	APSIM
AMIMO 7Y (AMIMO SEVEN YANKEE ARRIVAL)	FM AMIMO, to RISLU, to NETUM, to GIBMO, to KEKEX, to NONRU.	Cross AMIMO at FL110 or above. Cross GIBMO at FL110 or above. Cross NONRU at 5000 FT or above.	As cleared by ATC.	NONRU
AMIMO 7Z (AMIMO SEVEN ZULU ARRIVAL)	FM AMIMO, to NETUM, to GIBMO, to KEKEX, to NONRU.	Cross AMIMO at FL110 or above. Cross GIBMO at FL110 or above. Cross NONRU at 5000 FT or above.	As cleared by ATC.	NONRU
BAREG 2M (BAREG TWO MIKE ARRIVAL)	FM BAREG to APSIM.	Cross BAREG at 8000 FT or above. Cross APSIM at 5000 FT or above.	As cleared by ATC.	APSIM
GILGU 2M (GILGU TWO MIKE ARRIVAL)	FM GILGU to NONRU.	Cross GILGU at 8000 FT or above. Cross NONRU at 5000 FT or above.	As cleared by ATC.	NONRU
IDLIN 2M (IDLIN TWO MIKE ARRIVAL)	FM IDLIN to APSIM.	Cross IDLIN at 8000 FT or above. Cross APSIM at 5000 FT or above.	As cleared by ATC.	APSIM
LENSA 2M (LENSA TWO MIKE ARRIVAL)	FM LENSEA to APSIM.	Cross LENSEA at FL 120 or above. Cross APSIM at 5000 FT or above.	As cleared by ATC.	APSIM
LOMVI 2M (LOMVI TWO MIKE ARRIVAL)	FM LOMVI to TC501.	Cross LOMVI at 7000 FT or above. Cross TC501 at 5000 FT or above.	As cleared by ATC.	TC501