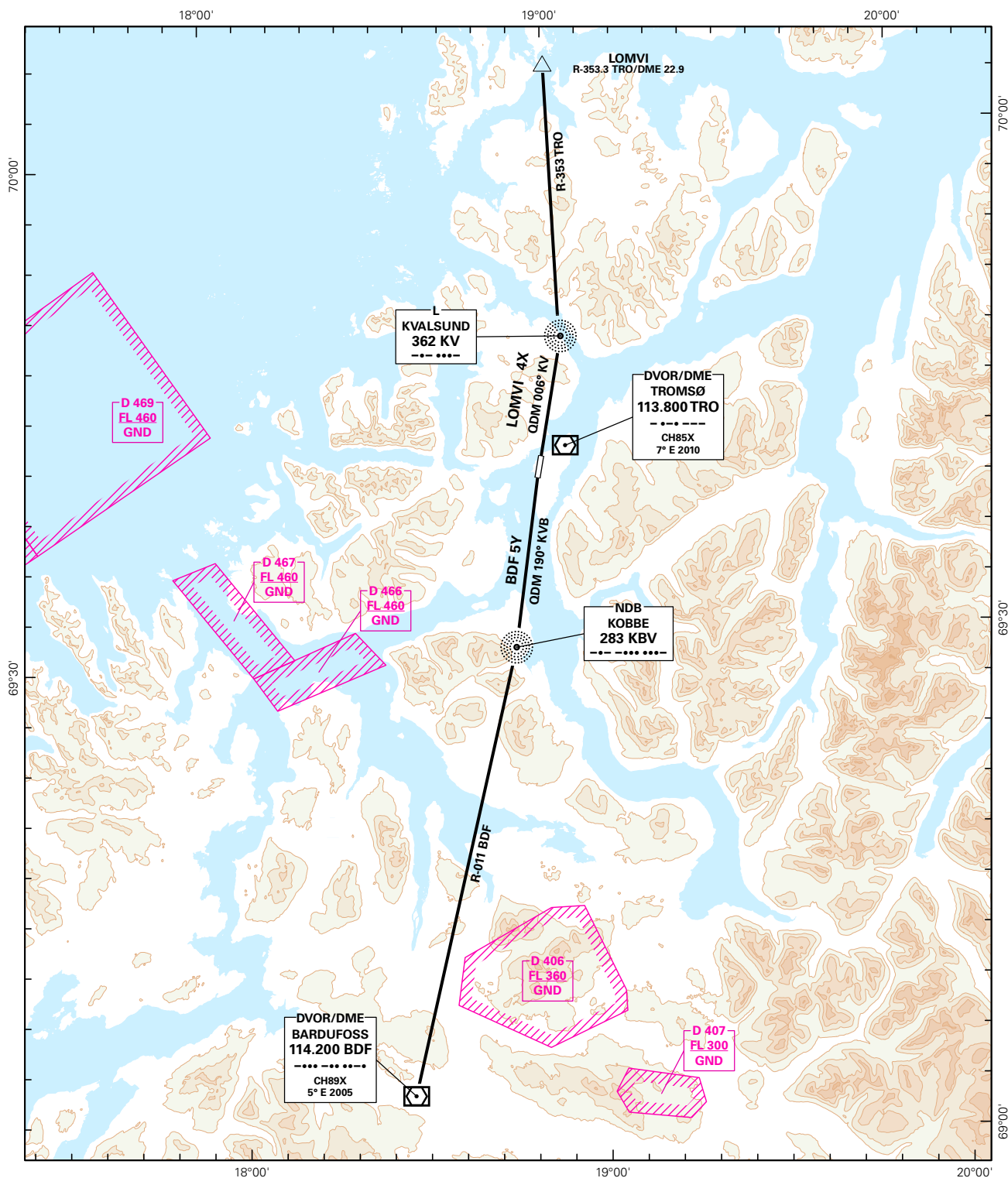
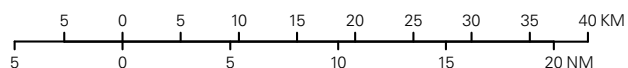


STANDARD DEPARTURE CHART INSTRUMENT - ICAO

	ATIS: 126.125	ALT AND ELEV ARE IN FT DIST IN NM			TROMSØ/LANGNES RWY 01/19 NORWAY LOMVI 4X, BDF 5Y
	APP: 123.750				
	TWR: 118.300 (122.100)				
	VDF: 123.750	1:650 000	VAR: 7.1 ° E (2010)	TA 7000	



CHANGES: BDF 5Y

SID DESCRIPTION OVERLEAF
DESCRIPTION OF WAYPOINTS, REF ENR 4.4ATS AIRSPACE CLASSIFICATIONS: REF ENR 1.4
LEGEND: REF GEN 2.3

STANDARD DEPARTURE ROUTES INSTRUMENT (SID)

TROMSØ/LANGNES
RWY 01/19

VECTORIZING:

Vectoring involving deviation from SID may be used by ATC. At MNM EN-ROUTE ALT, clearance for DCT routing will be given as soon as TFC permits.

RADIO COMMUNICATION
FAILURE:

Squawk 7600. In case of RCF after take-off, ACFT shall maintain last cleared and acknowledged level until passing DME 20 TRO, then climb to the cruising level stated in the CPL. After completion of SID proceed the most direct route to join the cleared ATS-route.

ACFT under radar vectoring shall, after set transponder to 7600, continue on heading last cleared and acknowledged for 2 minutes, then proceed the most direct route to join the cleared ATS-route.

RWY 01

DESIGNATOR	ROUTE	RESTRICTION	CLIMB TO	CONTACT
LOMVI 4X (LOMVI FOUR X-RAY DEPARTURE)	Climb on QDM 006° to KV. Intercept and proceed on R-353 TRO to LOMVI.	A MNM climb gradient of 6.2% i.e. 377 FT/NM is required to 1600 FT. MAX IAS in turn 185 KT. If unable to comply, inform ATC.	FL 90	When airborne contact Tromsø APP 123.750 MHZ

RWY 19

DESIGNATOR	ROUTE	RESTRICTION	CLIMB TO	CONTACT
BDF 5Y (BARDUFOSSE FIVE YANKEE DEPARTURE)	Climb to KBV. Intercept and proceed on R-011 BDF to BDF	A MNM climb gradient of 5.4% i.e. 330 FT/NM is required to 3700 FT. If unable to comply, inform ATC.	FL 90	When airborne contact Tromsø APP 123.750 MHZ