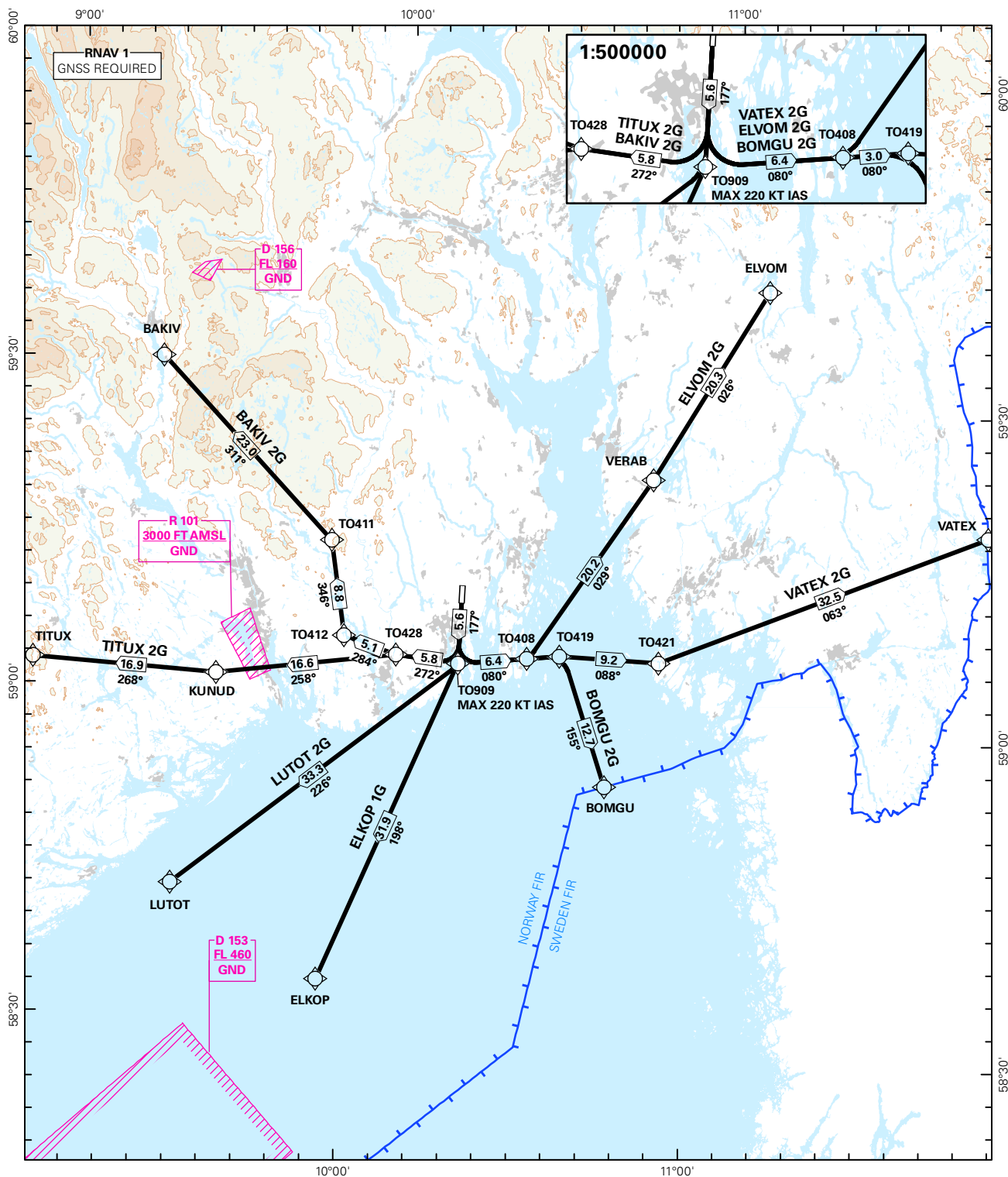


## STANDARD DEPARTURE CHART INSTRUMENT (RNAV 1 SID BASED ON GNSS)

<div><div></div><div>3<sub>9</sub></div><div>MSA 25 NM ARP</div></div>	ATIS: 119.075	ALT AND ELEV ARE IN FT DIST IN NM			SANDEFJORD/TORP  RWY 18  NORWAY	
	APP FARRIS:124.350 134.050					
	TWR: 118.650					
	VDF: 118.650					
	GND: 126.175	1:1 000 000	VAR: 2.5 ° E (2015)	TA 7000		
	BAKIV 2G, BOMGU 2G, ELKOP 1G, ELVOM 2G, LUTOT 2G, TITUX 2G, VATEX 2G					



SID DESCRIPTION OVERLEAF  
DESCRIPTION OF WAYPOINTS, REF ENR 4.4

ATS AIRSPACE CLASSIFICATIONS: REF ENR 1.4  
LEGEND: REF GEN 2.3

CHANGES: ELKOP 1G, MAG VAR, EDITORIALS.

**STANDARD DEPARTURE ROUTES - INSTRUMENT  
(RNAV 1 SID BASED ON GNSS)**
**SANDEFJORD/Torp  
RWY 18**
**GENERAL:** Surveillance service shall be available.

**RADIO COMMUNICATION FAILURE:** Squawk A7600.  
In case of RCF after take-off, maintain last assigned level for 2 minutes, then climb to the cruising level stated in the CPL. ACFT under vectoring shall, after setting their transponder to 7600, continue on last cleared and acknowledged heading and level for 2 minutes, then proceed via the most direct route to join the cleared SID or route and climb to the cruising level stated in the CPL.

**CLOSE-IN OBSTACLES** Close-in OBST (trees) in DER area (end of CWY) E and W of extended RWY CL.

**NON RNAV 1 ACFT:** At first contact with "TORP TWR" state "UNABLE RNAV 1 DUE (reason)".  
OMNI-DIRECTIONAL DEPARTURE available (see ENTO AD 2.24).

DESIGNATOR	ROUTE	RESTRICTIONS	CLIMB TO	CONTACT
<b>BAKIV 2G</b> (BAKIV TWO GOLF DEPARTURE)	Climb on course 177° to TO909, turn right to TO428, to TO412, to TO411, to BAKIV.	MNM climb gradient 6.6% (401 FT/NM) to 4000 FT. If unable to comply, inform ATC. MAX 220 KT IAS at TO909	4000 FT. Expect further climb from Farris APCH.	When instructed by TORP TWR, contact FARRIS APP 134.050 MHZ.
<b>BOMGU 2G</b> (BOMGU TWO GOLF DEPARTURE)	Climb on course 177° to TO909, left to TO419, to BOMGU.	MNM climb gradient 6.6% (401 FT/NM) to 4000 FT. If unable to comply, inform ATC. MAX 220 KT IAS at TO909	4000 FT. Expect further climb from Farris APCH.	When instructed by TORP TWR, contact FARRIS APP 134.050 MHZ.
<b>ELKOP 1G</b> (ELKOP ONE GOLF DEPARTURE)	Climb on course 177° to TO909, to ELKOP.	MNM climb gradient 6.6% (401 FT/NM) to 4000 FT. If unable to comply, inform ATC. MAX 220 KT IAS at TO909	4000 FT. Expect further climb from Farris APCH.	When instructed by TORP TWR, contact FARRIS APP 134.050 MHZ.
<b>ELVOM 2G</b> (ELVOM TWO GOLF DEPARTURE)	Climb on course 177° to TO909, then left to TO408, to VERAB, to ELVOM.	MNM climb gradient 6.6% (401 FT/NM) to 4000 FT. If unable to comply, inform ATC. MAX 220 KT IAS at TO909	4000 FT. Expect further climb from Farris APCH.	When instructed by TORP TWR, contact FARRIS APP 134.050 MHZ.
<b>LUTOT 2G</b> (LUTOT TWO GOLF DEPARTURE)	Climb on course 177° to TO909, to LUTOT.	MNM climb gradient 6.6% (401 FT/NM) to 4000 FT. If unable to comply, inform ATC. MAX 220 KT IAS at TO909	4000 FT. Expect further climb from Farris APCH.	When instructed by TORP TWR, contact FARRIS APP 134.050 MHZ.
<b>TITUX 2G</b> (TITUX TWO GOLF DEPARTURE)	Climb on course 177° to TO909, right to TO428, to KUNUD, to TITUX.	MNM climb gradient 6.6% (401 FT/NM) to 4000 FT. If unable to comply, inform ATC. MAX 220 KT IAS at TO909	4000 FT. Expect further climb from Farris APCH.	When instructed by TORP TWR, contact FARRIS APP 134.050 MHZ.
<b>VATEX 2G</b> (VATEX TWO GOLF DEPARTURE)	Climb on course 177° to TO909, left to TO419, to TO421, to VATEX	MNM climb gradient 6.6% (401 FT/NM) to 4000 FT. If unable to comply, inform ATC. MAX 220 KT IAS at TO909	4000 FT. Expect further climb from Farris APCH.	When instructed by TORP TWR, contact FARRIS APP 134.050 MHZ.