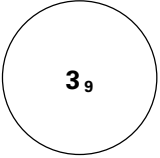
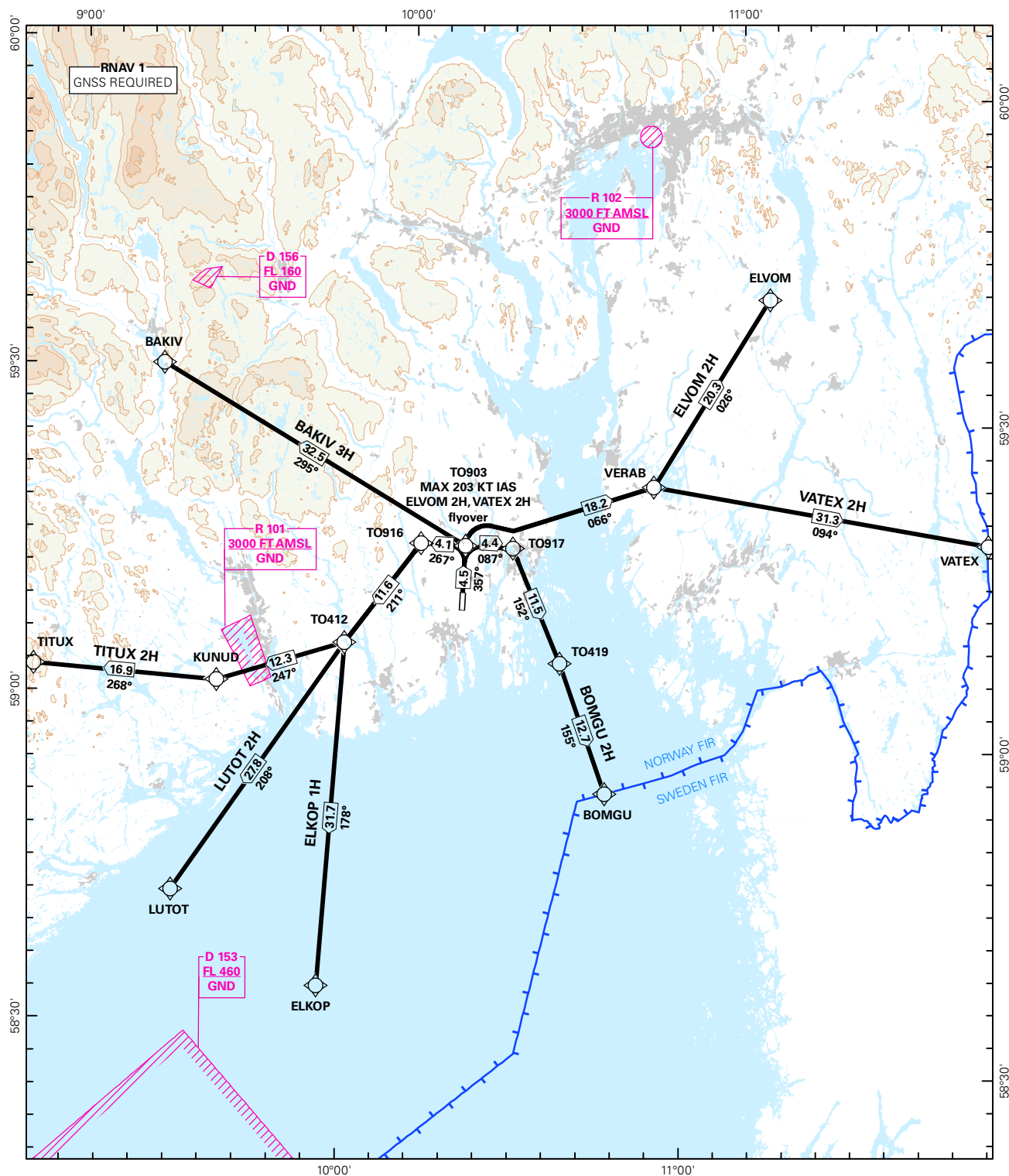


STANDARD DEPARTURE CHART INSTRUMENT (RNAV 1 SID BASED ON GNSS)

 MSA 25 NM ARP	ATIS: 119.075	ALT AND ELEV ARE IN FT DIST IN NM		SANDEFJORD/TORP RWY 36 NORWAY
	APP FARRIS: 124.350 134.050			
	TWR: 118.650			
	VDF: 118.650			
	GND: 126.175	1:1 000 000	VAR: 2.5 ° E (2015)	TA 7000

BAKIV 3H, BOMGU 2H, ELKOP 1H, ELVOM 2H, LUTOT 2H, TITUX 2H, VATEX 2H



SID DESCRIPTION OVERLEAF
DESCRIPTION OF WAYPOINTS, REF ENR 4.4

ATS AIRSPACE CLASSIFICATIONS: REF ENR 1.4
LEGEND: REF GEN 2.3

CHANGES: ELKOP 1H, SPEED, MAG VAR, EDITORIALS.

**STANDARD DEPARTURE ROUTES - INSTRUMENT
(RNAV 1 SID BASED ON GNSS)**
**SANDEFJORD/Torp
RWY 36**
GENERAL: Surveillance service shall be available.

RADIO COMMUNICATION FAILURE: Squawk A7600.
In case of RCF after take-off, maintain last assigned level for 2 minutes, then climb to the cruising level stated in the CPL. ACFT under vectoring shall, after setting their transponder to 7600, continue on last cleared and acknowledged heading and level for 2 minutes, then proceed via the most direct route to join the cleared SID or route and climb to the cruising level stated in the CPL.

CLOSE-IN OBSTACLES Close-in OBST (trees) in DER area (end of CWY) E and W of extended RWY CL.

NON RNAV 1 ACFT: At first contact with "TORP TWR" state "UNABLE RNAV 1 DUE (reason)".
OMNI-DIRECTIONAL DEPARTURE available (see ENTO AD 2.24).

DESIGNATOR	ROUTE	RESTRICTIONS	CLIMB TO	CONTACT
BAKIV 3H (BAKIV THREE HOTEL DEPARTURE)	Climb on course 357° to TO903, to BAKIV.	MNM climb gradient 6.6% (401 FT/NM) to 4000 FT. If unable to comply, inform ATC. MAX 203 KT IAS at TO903	4000 FT. Expect further climb from Farris APCH.	When instructed by TORP TWR, contact FARRIS APP 134.050 MHZ.
BOMGU 2H (BOMGU TWO HOTEL DEPARTURE)	Climb on course 357° to TO903, right to TO917, to TO419, to BOMGU.	MNM climb gradient 6.6% (401 FT/NM) to 4000 FT. If unable to comply, inform ATC. MAX 203 KT IAS at TO903	4000 FT. Expect further climb from Farris APCH.	When instructed by TORP TWR, contact FARRIS APP 134.050 MHZ.
ELKOP 1H (ELKOP ONE HOTEL DEPARTURE)	Climb on course 357° to TO903, left to TO916, to TO412, to ELKOP	MNM climb gradient 6.6% (401 FT/NM) to 4000 FT. If unable to comply, inform ATC. MAX 203 KT IAS at TO903	4000 FT. Expect further climb from Farris APCH	When instructed by TORP TWR, contact FARRIS APP 134.050 MHZ.
ELVOM 2H (ELVOM TWO HOTEL DEPARTURE)	Climb on course 357° to TO903, to VERAB, to ELVOM.	MNM climb gradient 6.6% (401 FT/NM) to 4000 FT. If unable to comply, inform ATC. MAX 203 KT IAS at TO903	4000 FT. Expect further climb from Farris APCH.	When instructed by TORP TWR, contact FARRIS APP 134.050 MHZ.
LUTOT 2H (LUTOT TWO HOTEL DEPARTURE)	Climb on course 357° to TO903, left to TO916, to TO412, to LUTOT.	MNM climb gradient 6.6% (401 FT/NM) to 4000 FT. If unable to comply, inform ATC. MAX 203 KT IAS at TO903	4000 FT. Expect further climb from Farris APCH	When instructed by TORP TWR, contact FARRIS APP 134.050 MHZ.
TITUX 2H (TITUX TWO HOTEL DEPARTURE)	Climb on course 357° to TO903, left to TO916, to TO412, to KUNUD, to TITUX.	MNM climb gradient 6.6% (401 FT/NM) to 4000 FT. If unable to comply, inform ATC. MAX 203 KT IAS at TO903	4000 FT. Expect further climb from Farris APCH.	When instructed by TORP TWR, contact FARRIS APP 134.050 MHZ.
VATEX 2H (VATEX TWO HOTEL DEPARTURE)	Climb on course 357° to TO903, to VERAB, to VATEX.	MNM climb gradient 6.6% (401 FT/NM) to 4000 FT. If unable to comply, inform ATC. MAX 203 KT IAS at TO903	4000 FT. Expect further climb from Farris APCH.	When instructed by TORP TWR, contact FARRIS APP 134.050 MHZ.