

INSTRUMENT APPROACH CHART - ICAO PLAN VIEW SCALE: 1:500 000

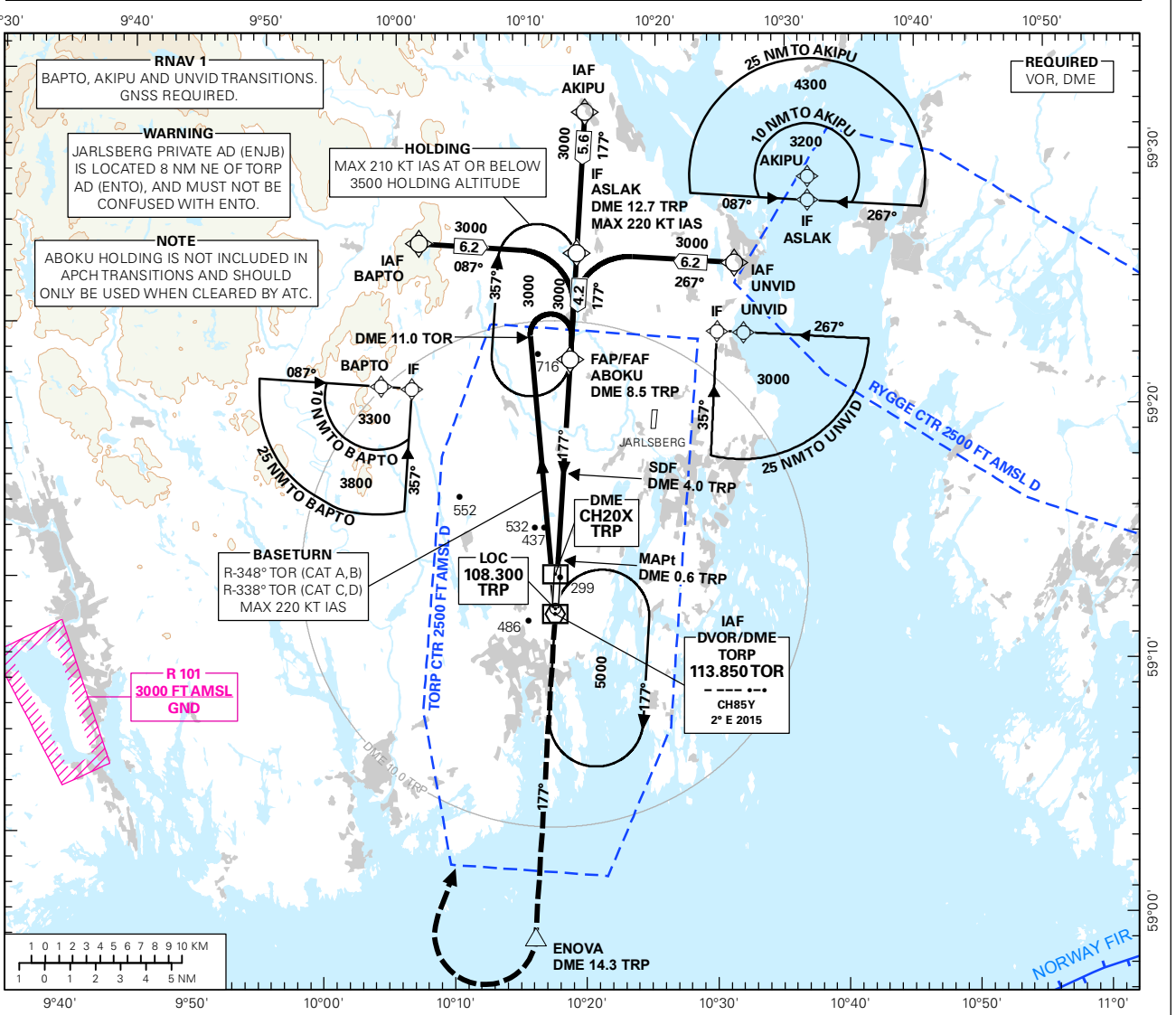
SANDEFJORD

TORP

ILS or LOC RWY 18

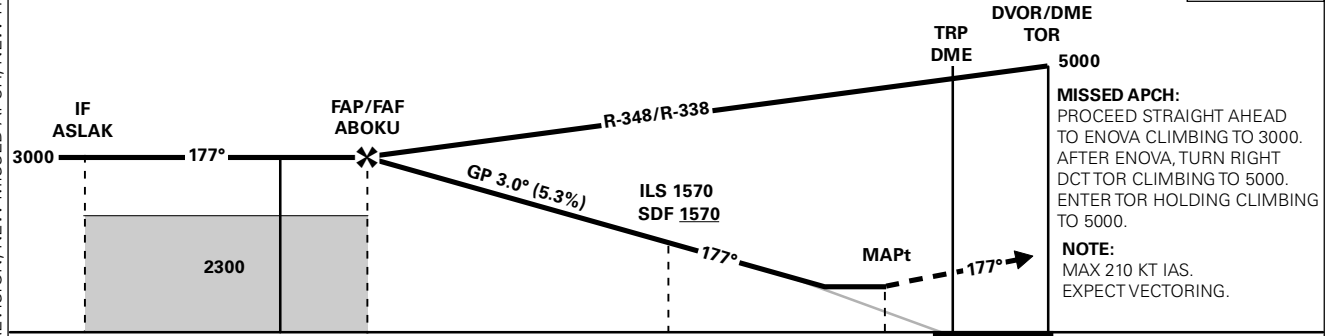
TRANSITION ALTITUDE
7000

ATIS: 119.075	AD ELEV: 285
APP FARRIS: 134.050 124.350	THR ELEV: 281
TWR: 118.650	HGT RELATED TO THR RWY 18 ELEV, ALT AND HGT IN FT
GND: 126.175	CIRCLING HGT RELATED TO AD ELEV
VDF: 118.650	BEARINGS ARE MAGNETIC - VAR 2.5 ° E (2015)



DIST TO TRP	9	8	7	6	5	4	3	2
ALT (HGT)	-	2850 (2569)	2530 (2249)	2210 (1929)	1890 (1609)	1570 (1289)	1250 (969)	930 (649)

ILS RDH 53



MISSED APCH:
PROCEED STRAIGHT AHEAD TO ENOVA CLIMBING TO 3000. AFTER ENOVA, TURN RIGHT DCT TOR CLIMBING TO 5000. ENTER TOR HOLDING CLIMBING TO 5000.

NOTE:
MAX 210 KT IAS. EXPECT VECTORING.

12.7	8.5	4.0	0.6	0
12.6	8.3	3.8	0.4	0

CAT OF ACFT	A				B				C				D					
	CAT I		A		B		C		D		A		B		C		D	
STRAIGHT - IN	478 (197)		490 (209)		499 (217)		509 (228)		740 (459)		-		-		-		-	
CIRCLING	840 (555)		880 (595)		980 (695)		1000 (715)		-		-		-		-		-	

NOTE: -

CHANGES: COMPLETE REVISION, NEW MISSED APCH, NEW HOLDING ABOVE FAF.