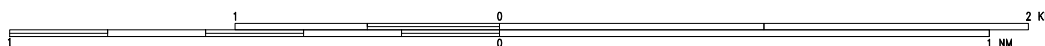
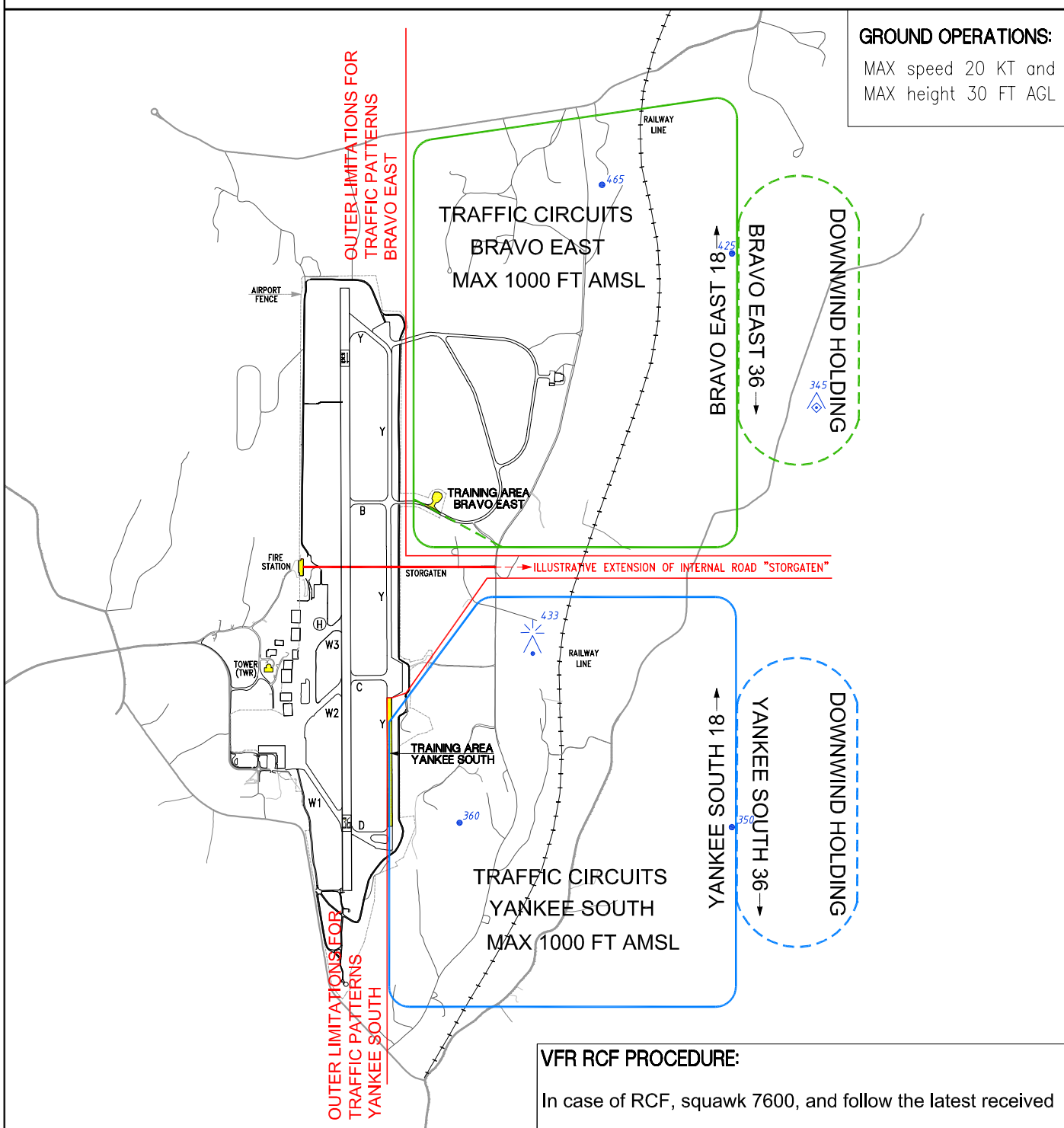


TRAINING AREAS AND PATTERNS HELICOPTER	ELEV AND ALT IN FEET	OBST LESS THAN 100 FT GND NORMALLY NOT SHOWN	TWR 118.650	SANDEFJORD TORP NORWAY
			ATIS 119.075	
			VDF 118.650	
			GND 126.175	

SCALE 1:30.000

**GROUND OPERATIONS:**

MAX speed 20 KT and
MAX height 30 FT AGL

**MISSED APPROACH PROCEDURE, FOR BOTH TRAFFIC CIRCUITS
ON BRAVO EAST AND YANKEE SOUTH:**

1. Inform TORP TWR about execution of missed approach.
2. Unless otherwise instructed by TORP TWR, climb to 1000 FT and follow the pattern for the TFC circuit currently being flown until passing the LDG area.
3. Then join a new TFC circuit identical to the one just flown.

VFR RCF PROCEDURE:

In case of RCF, squawk 7600, and follow the latest received clearance from TORP TWR. If operating in the TFC circuit without having received landing clearance or other instructions, enter downwind holding until communication with TWR is reestablished (visual or other).

If operating on ground inside a training area, stay inside the area until communication with TWR is reestablished (visual or other).

CHANGES: NEW CHART

THIS PAGE INTENTIONALLY LEFT BLANK