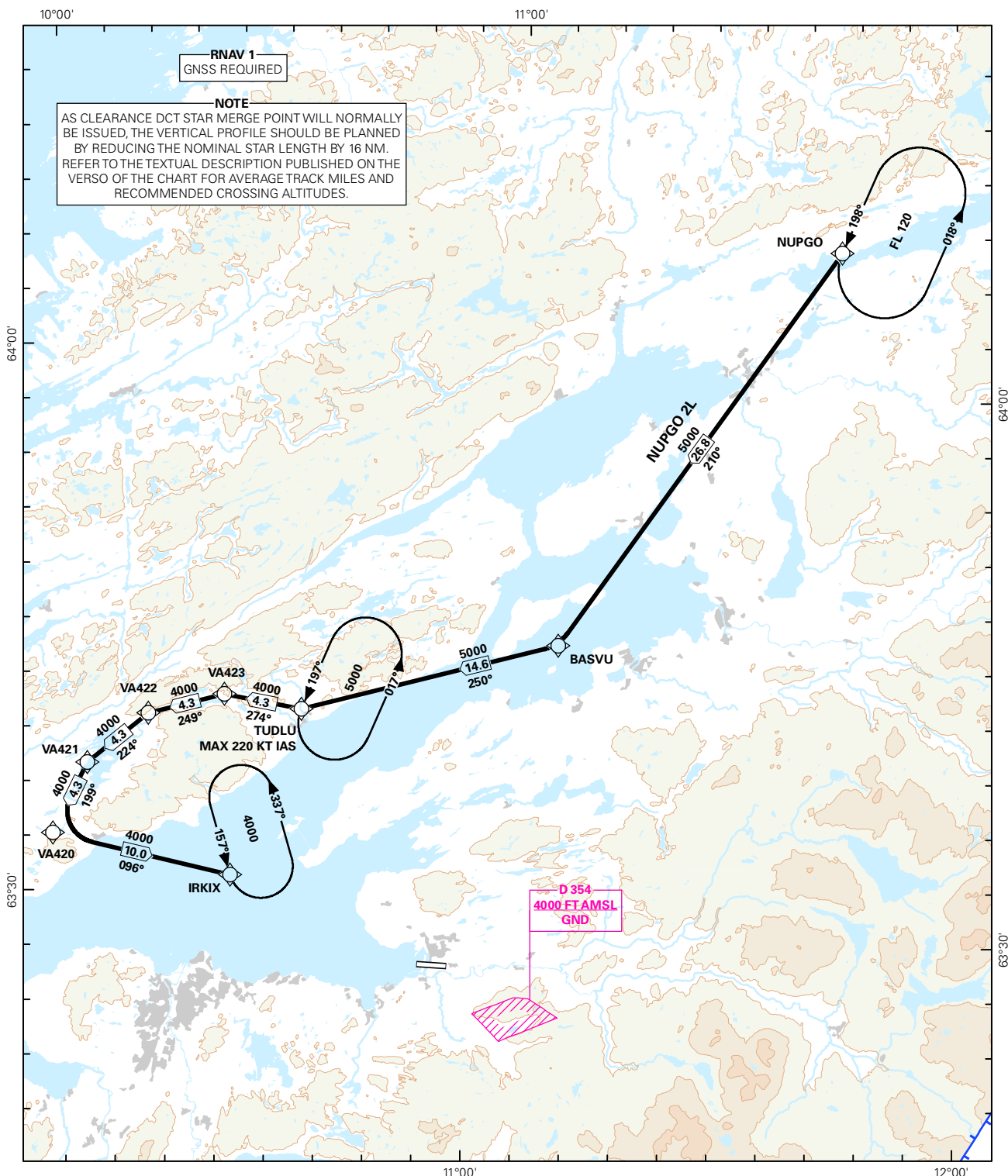


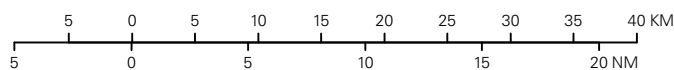
## STANDARD ARRIVAL CHART INSTRUMENT (RNAV 1 STAR BASED ON GNSS)

<div style="border: 1px solid black; border-radius: 50%; width: 80px; height: 80px; display: flex; align-items: center; justify-content: center; margin: 0 auto;"> <div style="font-size: 24px; font-weight: bold;">5<sub>8</sub></div> </div> <div style="text-align: center; margin-top: 5px;">MSA 25 NM ARP</div>	ATIS: 127550	ALT AND ELEV ARE IN FT DIST IN NM		TRONDHEIM/VÆRNES  <b>RWY 09</b>  NORWAY  NUPGO 2L	
	APP: 118.600 119.150				
	TWR: 119.400 133.750				
	VDF: 118.600 119.400				
		1:600 000	VAR: 2.9 ° E (2015)	TA 7000	



STAR DESCRIPTION OVERLEAF  
DESCRIPTION OF WAYPOINTS, REF ENR 4.4

ATS AIRSPACE CLASSIFICATIONS: REF ENR 1.4  
LEGEND: REF GEN 2.3



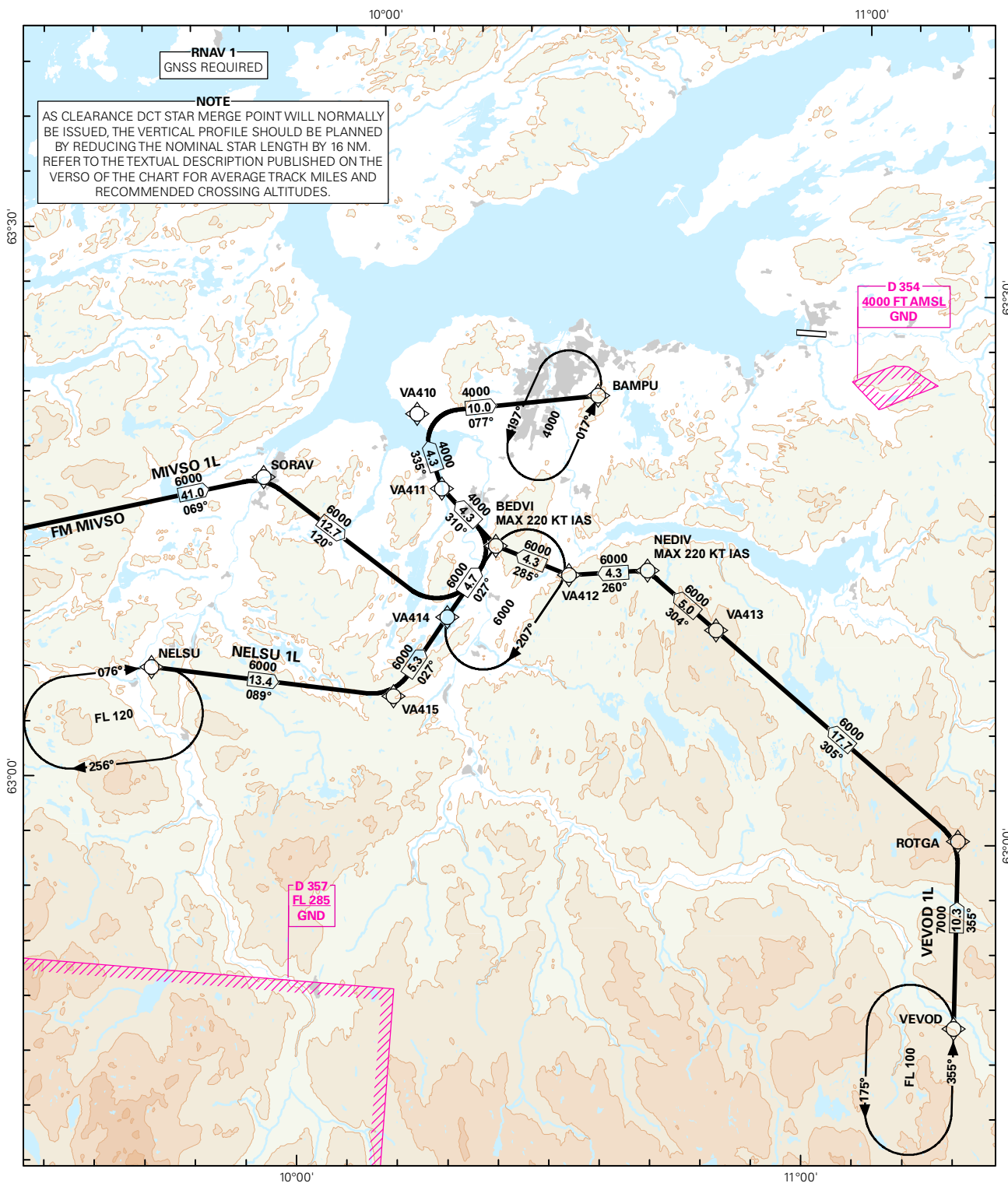
CHANGES: NOTEBOOK.

Avinor

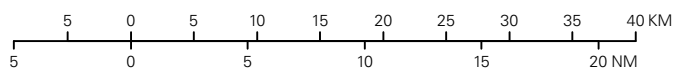
17 SEP 2015

## STANDARD ARRIVAL CHART INSTRUMENT (RNAV 1 STAR BASED ON GNSS)

<div style="border: 1px solid black; border-radius: 50%; width: 80px; height: 80px; display: flex; align-items: center; justify-content: center; margin: 0 auto;"> <div style="font-size: 2em; font-weight: bold;">5<sub>8</sub></div> </div> <div style="text-align: center; font-weight: bold; margin-top: 5px;">MSA 25 NM ARP</div>	ATIS: 127550	ALT AND ELEV ARE IN FT DIST IN NM		TRONDHEIM/VÆRNES	
	APP: 118.600 119.150				
	TWR: 119.400 133.750				
	VDF: 118.600 119.400				
		1:600 000	VAR: 2.9 ° E (2015)	TA 7000	RWY 09
					NORWAY
					MIVSO 1L, NELSU 1L, VEVOD 1L



CHANGES: NOTEBOX, EDITORIALS.



**STANDARD ARRIVAL ROUTES - INSTRUMENT  
(RNAV 1 STAR BASED ON GNSS)**
**TRONDHEIM/Værnes  
RWY 09**

**GENERAL:** Class A GNSS shall not be used.  
Surveillance service shall be available.

**LOSS OF RNAV 1 CAPABILITY:** Request vectoring.

**VECTORIZING:** Vectoring may be used for sequencing.

**RADIO COMMUNICATION FAILURE:** Squawk A7600. Proceed on STAR and make APCH to RWY 09.

DESIGNATOR	ROUTE	RESTRICTIONS	DESCEND	CLEARANCE LIMIT
<b>MIVSO 1L</b> (MIVSO ONE LIMA ARRIVAL)	From MIVSO to SORAV, to VA414, turn left to BEDVI, to VA411, to VA410, turn right to BAMPU.	Cross MIVSO at or above FL120. Cross BEDVI at or above 6000 FT. MAX 220 KT IAS at BEDVI. Cross BAMPU at or above 4000 FT.	As cleared by ATC.	BAMPU
<b>NELSU 1L</b> (NELSU ONE LIMA ARRIVAL)	From NELSU to VA415, to VA414, to BEDVI, to VA411, to VA410, turn right to BAMPU.	Cross NELSU at or above FL120. Cross BEDVI at or above 6000 FT. MAX 220 KT IAS at BEDVI. Cross BAMPU at or above 4000 FT.	As cleared by ATC	BAMPU
<b>NUPGO 2L</b> (NUPGO TWO LIMA ARRIVAL)	From NUPGO to BASVU, to TUDLU, to VA423, to VA422, to VA421, to VA420, turn left to IRKIX.	Cross NUPGO at or above FL120. Cross TUDLU at or above 5000 FT. MAX 220 KT IAS at TUDLU. Cross IRKIX at or above 4000 FT.	As cleared by ATC.	IRKIX
<b>VEVOD 1L</b> (VEVOD ONE LIMA ARRIVAL)	From VEVOD to ROTGA, to VA413, to NEDIV, to VA412, to BEDVI, to VA411, to VA410, turn right to BAMPU.	Cross VEVOD at or above FL100. Cross ROTGA at or above 7000 FT. Cross VA413 at or above 6000 FT. MAX 220 KT IAS at NEDIV. Cross BAMPU at or above 4000 FT.	As cleared by ATC	BAMPU

**Note:** As clearance DCT STAR merge point will normally be issued, descend should be planned by using the average track miles from the STAR starting point to THR as indicated below.

DESIGNATOR	AVERAGE TRACK MILES (NM)	RECOMMENDED ALTITUDE
<b>MIVSO 1L</b>	80	Cross VA414 at 7000 FT
<b>NELSU 1L</b>	46	Cross VA414 at 7000 FT
<b>NUPGO 2L</b>	63	Cross TUDLU at 7000 FT
<b>VEVOD 1L</b>	55	Cross NEDIV at 7000 FT