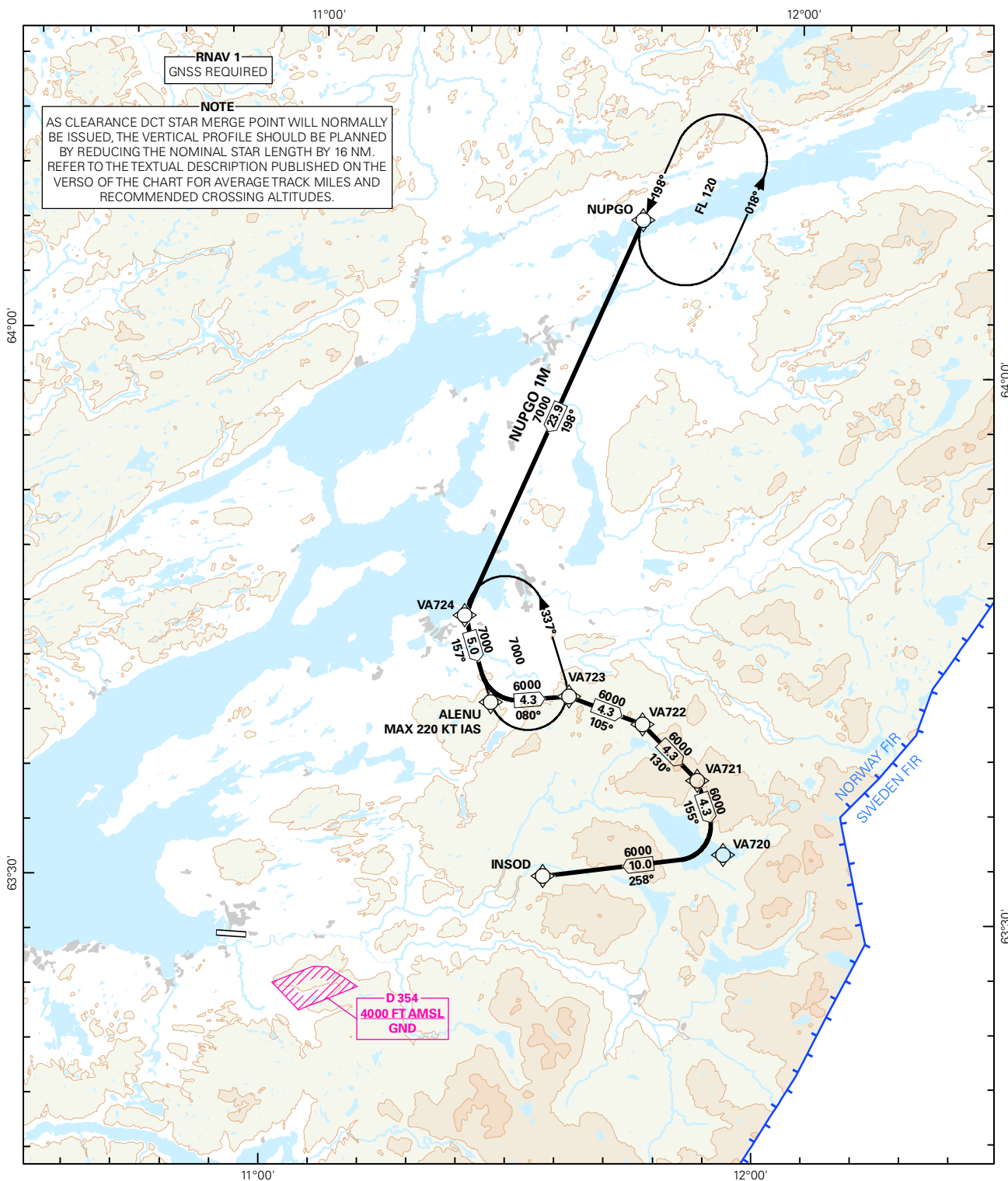


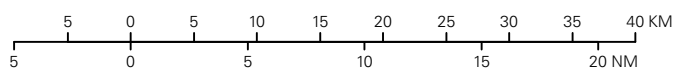
## STANDARD ARRIVAL CHART INSTRUMENT (RNAV 1 STAR BASED ON GNSS)

<div style="border: 1px solid black; border-radius: 50%; width: 60px; height: 60px; display: flex; align-items: center; justify-content: center; margin: 0 auto;"> <div style="font-size: 24px; font-weight: bold;">5<sub>8</sub></div> </div> <div style="text-align: center; margin-top: 5px;">MSA 25 NM ARP</div>	ATIS: 127.550	ALT AND ELEV ARE IN FT DIST IN NM		<b>TRONDHEIM/VÆRNES</b>  <b>RWY 27</b>  NORWAY  NUPGO 1M	
	APP: 118.600 119.150				
	TWR: 119.400 133.750				
	VDF: 118.600 119.400				
		1:600 000	VAR: 2.9 ° E (2015)	TA 7000	



STAR DESCRIPTION OVERLEAF  
DESCRIPTION OF WAYPOINTS, REF ENR 4.4

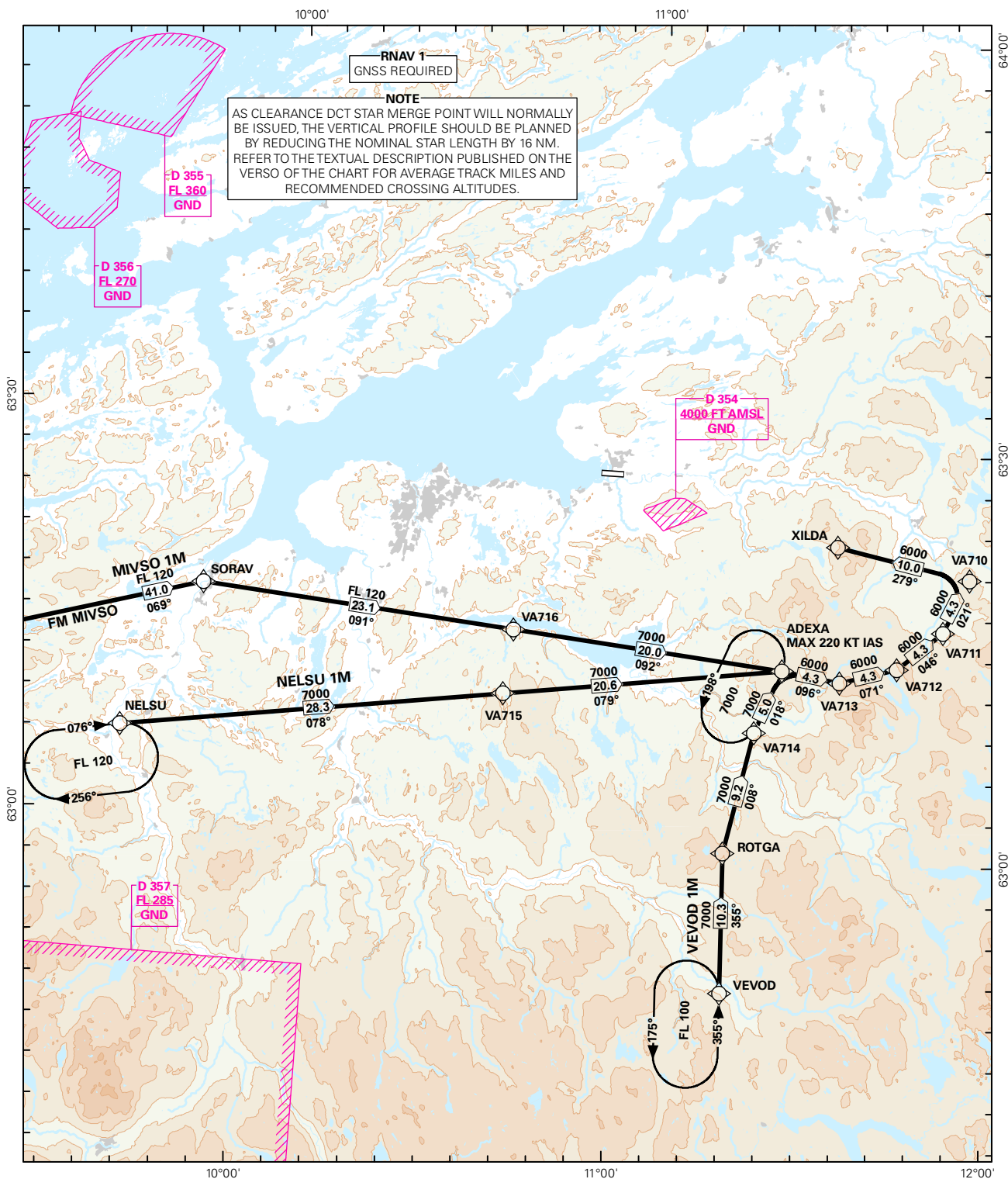
ATS AIRSPACE CLASSIFICATIONS: REF ENR 1.4  
LEGEND: REF GEN 2.3



CHANGES: NOTEBOOK.

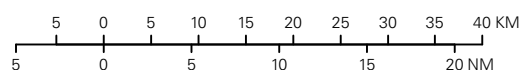
## STANDARD ARRIVAL CHART INSTRUMENT (RNAV 1 STAR BASED ON GNSS)

<div style="border: 1px solid black; border-radius: 50%; width: 80px; height: 80px; display: flex; align-items: center; justify-content: center; margin: 0 auto;"> <div style="font-size: 2em; font-weight: bold;">5<sub>8</sub></div> </div> <div style="text-align: center; font-weight: bold; margin-top: 5px;">MSA 25 NM ARP</div>	ATIS: 127.550	ALT AND ELEV ARE IN FT DIST IN NM		<b>TRONDHEIM/VÆRNES</b>  <b>RWY 27</b>  NORWAY  MIVSO 1M, NELSU 1M, VEVOD 1M
	APP: 118.600 119.150			
	TWR: 119.400 133.750			
	VDF: 118.600 119.400			
		1:800 000	VAR: 2.9 ° E (2015)	TA 7000



STAR DESCRIPTION OVERLEAF  
DESCRIPTION OF WAYPOINTS, REF ENR 4.4

ATS AIRSPACE CLASSIFICATIONS: REF ENR 1.4  
LEGEND: REF GEN 2.3



CHANGES: NOTEBOOK.

Avinor

17 SEP 2015

**STANDARD ARRIVAL ROUTES - INSTRUMENT  
(RNAV 1 STAR BASED ON GNSS)**
**TRONDHEIM/Værnes  
RWY 27**

**GENERAL:** Class A GNSS shall not be used.  
Surveillance service shall be available.

**LOSS OF RNAV 1 CAPABILITY:** Request vectoring.

**VECTORIZING:** Vectoring may be used for sequencing.

**RADIO COMMUNICATION FAILURE:** Squawk A7600. Proceed on STAR and make APCH to RWY 27.

DESIGNATOR	ROUTE	RESTRICTIONS	DESCEND	CLEARANCE LIMIT
<b>MIVSO 1M</b> (MIVSO ONE MIKE ARRIVAL)	From MIVSO to SORAV, to VA716, to ADEXA, to VA713, to VA712, to VA711, to VA710, turn left to XILDA.	Cross VA716 at or above FL120. Cross ADEXA at or above 7000 FT. MAX 220 KT IAS at ADEXA. Cross XILDA at or above 6000 FT.	As cleared by ATC.	XILDA
<b>NELSU 1M</b> (NELSU ONE MIKE ARRIVAL)	From NELSU to VA715, to ADEXA, to VA713, to VA712, to VA711, to VA710, turn left to XILDA.	Cross NELSU at or above FL120. Cross ADEXA at or above 7000 FT. MAX 220 KT IAS at ADEXA. Cross XILDA at or above 6000 FT.	As cleared by ATC.	XILDA
<b>NUPGO 1M</b> (NUPGO ONE MIKE ARRIVAL)	From NUPGO to VA724, to ALENU, to VA723, to VA722, to VA721, to VA720, turn right to INSOD.	Cross NUPGO at or above FL120. Cross ALENU at or above 7000 FT. MAX 220 KT IAS at ALENU. Cross INSOD at or above 6000 FT.	As cleared by ATC.	INSOD
<b>VEVOD 1M</b> (VEVOD ONE MIKE ARRIVAL)	From VEVOD to ROTGA, to VA714, to ADEXA, to VA713, to VA712, to VA711, to VA710, turn left to XILDA.	Cross ROTGA at or above FL100. Cross ADEXA at or above 7000 FT. MAX 220 KT IAS at ADEXA. Cross XILDA at or above 6000 FT.	As cleared by ATC.	XILDA

**Note:** As clearance DCT STAR merge point will normally be issued, descend should be planned by using the average track miles from the STAR starting point to THR as indicated below.

DESIGNATOR	AVERAGE TRACK MILES (NM)	RECOMMENDED ALTITUDE
<b>MIVSO 1M</b>	114	Cross ADEXA at 7000 FT
<b>NELSU 1M</b>	77	Cross ADEXA at 7000 FT
<b>NUPGO 1M</b>	56	Cross ALENU at 7000 FT
<b>VEVOD 1M</b>	53	Cross ADEXA at 7000 FT