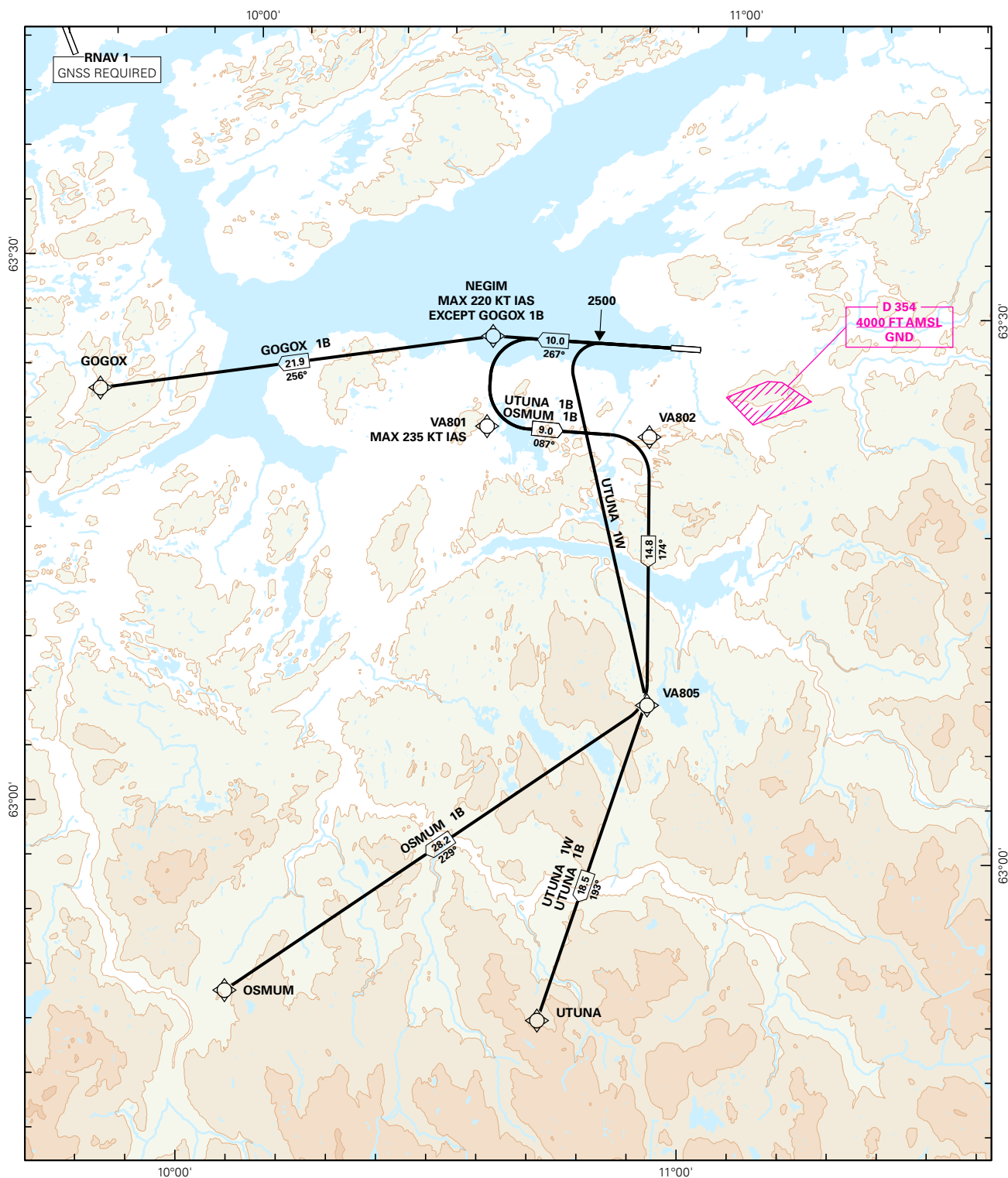


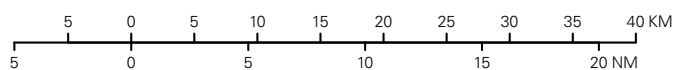
STANDARD DEPARTURE CHART INSTRUMENT (RNAV 1 SID BASED ON GNSS)

<div style="border: 1px solid black; border-radius: 50%; width: 60px; height: 60px; display: flex; align-items: center; justify-content: center; margin: 0 auto;"> <div style="font-size: 24px; font-weight: bold;">5₈</div> </div> <div style="text-align: center; font-weight: bold; margin-top: 5px;">MSA 25 NM ARP</div>	ATIS: 127550	ALT AND ELEV ARE IN FT DIST IN NM		TRONDHEIM/VÆRNES RWY 27 NORWAY	
	APP: 118.600 119.150				
	TWR: 119.400 133.750				
	VDF: 118.600 119.400				
		1:600 000	VAR: 2.9 ° E (2015)	TA 7000	
GOGOX 1B, OSMUM 1B, UTUNA 1B, UTUNA 1W					



SID DESCRIPTION OVERLEAF
DESCRIPTION OF WAYPOINTS, REF ENR 4.4

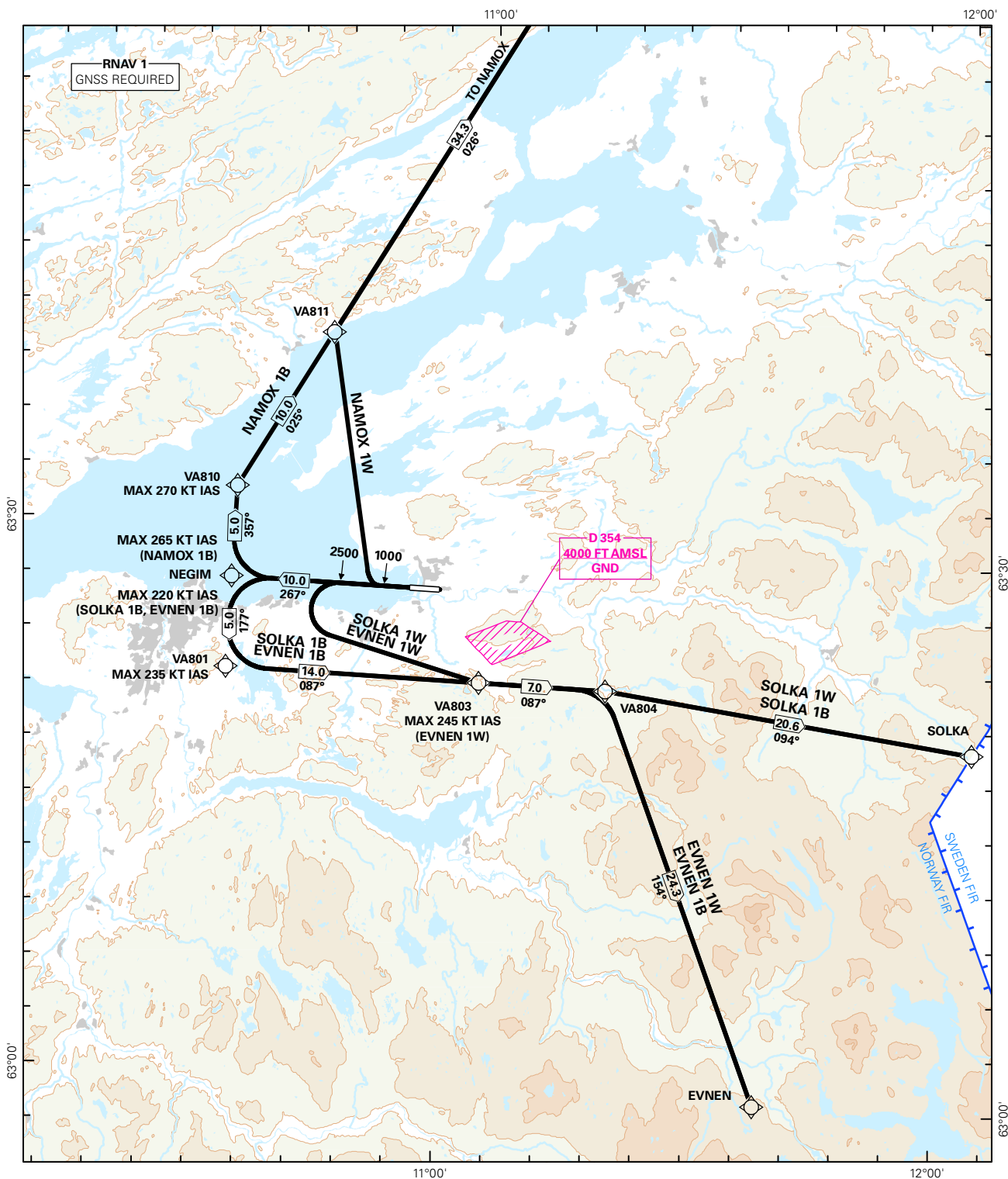
ATS AIRSPACE CLASSIFICATIONS: REF ENR 1.4
LEGEND: REF GEN 2.3



CHANGES: NEW PROCEDURES.

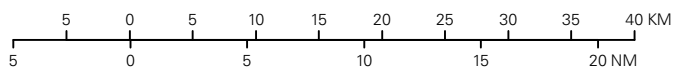
STANDARD DEPARTURE CHART INSTRUMENT (RNAV 1 SID BASED ON GNSS)

<div><div></div><div>5₈</div></div> <div>MSA 25 NM ARP</div>	ATIS: 127.550		ALT AND ELEV ARE IN FT DIST IN NM			VÆRNES RWY 27 NORWAY
	APP: 118.600 119.150					
	TWR: 119.400 133.750					
	GND: 121.600					
	VDF: 118.600 119.400		1:600 000	VAR: 2.9 ° E (2015)	TA 7000	
EVNEN 1B, EVNEN 1W, NAMOX 1B, NAMOX 1W, SOLKA 1B, SOLKA 1W						



SID DESCRIPTION OVERLEAF
DESCRIPTION OF WAYPOINTS, REF ENR 4.4

ATS AIRSPACE CLASSIFICATIONS: REF ENR 1.4
LEGEND: REF GEN 2.3



CHANGES: UNTAG RENAMED TO EVNEN.

**STANDARD DEPARTURE ROUTES - INSTRUMENT
(RNAV 1 SID BASED ON GNSS)**
**TRONDHEIM/Værnes
RWY 27**

GENERAL:	Class A GNSS shall not be used. Surveillance service shall be available.
RADIO COMMUNICATION FAILURE:	Squawk A7600. Maintain last assigned LVL until passing limits as described in "CLIMB TO" table for each individual SID, then climb to CPL cruising LVL. Aircraft under vectoring shall, after set transponder to A7600, proceed in the most direct manner possible to rejoin the CPL route no later than the next significant point, climbing to the CPL cruising LVL taking into consideration the applicable MNM flight ALT.
VECTORIZING/ DIRECT ROUTING:	When being vectored or cleared for DCT routing, the climb gradient(s) stated in SID "RESTRICTIONS"-table apply.
ATC CLEARANCE:	Departing IFR flights shall contact VÆRNES TWR to obtain ATC clearance.
NON RNAV 1 ACFT:	At first contact with VÆRNES TWR state "UNABLE RNAV 1 DUE (reason)". OMNI-DIRECTIONAL DEPARTURE available (see ENVA AD 2.24).
NOTE	The segment distances are based on average flight path criteria.

DESIGNATOR	ROUTE	RESTRICTIONS	CLIMB TO	CONTACT
GOGOX 1B (GOGOX ONE BRAVO DEPARTURE)	To NEGIM on course 267°, to GOGOX.	MNM climb gradient 5.0% (304 FT/NM) to 3000 FT to stay within controlled airspace. If unable to comply, inform ATC.	6000 FT. RCF: If no further climb received 10 NM prior to GOGOX, climb to CPL cruising level.	When instructed by Værnes TWR, contact Værnes APP 118.600 MHZ
NAMOX 1B (NAMOX ONE BRAVO DEPARTURE)	To NEGIM on course 267°, to VA810, to NAMOX.	MNM climb gradient 6.5% (395 FT/NM) to 3400 FT to stay within controlled airspace. MAX 265 KT IAS in turn at NEGIM. MAX 270 KT IAS in turn at VA810. If unable to comply, inform ATC.	6000 FT. RCF: If no further climb received 30 NM prior to NAMOX, climb to CPL cruising level.	When instructed by Værnes TWR, contact Værnes APP 118.600 MHZ
NAMOX 1W (NAMOX ONE WHISKEY DEPARTURE)	Climb on course 267° to 1000 FT, turn right DCT VA811, to NAMOX.	MNM climb gradient 7.4% (450 FT/NM) to 3900 FT to stay within controlled airspace. (For OBST reason MNM climb gradient 5.5% (335 FT/NM) to 2400 FT) If unable to comply, inform ATC.	6000 FT. RCF: If no further climb received 30 NM prior to NAMOX, climb to CPL cruising level.	When instructed by Værnes TWR, contact Værnes APP 118.600 MHZ
OSMUM 1B (OSMUM ONE BRAVO DEPARTURE)	To NEGIM on course 267°, to VA801, to VA802, to VA805, to OSMUM.	MNM climb gradient 6.5% (395 FT/NM) to 3400 FT to stay within controlled airspace. (For OBST reason MNM climb gradient 3.6% (219 FT/NM) to 1900 FT) MAX 220 KT IAS in turn at NEGIM. MAX 235 KT IAS in turn at VA801. If unable to comply, inform ATC.	6000 FT. RCF: If no further climb received prior to VA805, climb to CPL cruising level.	When instructed by Værnes TWR, contact Værnes APP 118.600 MHZ
SOLKA 1B (SOLKA ONE BRAVO DEPARTURE)	To NEGIM on course 267°, to VA801, to VA804, to SOLKA.	MNM climb gradient 6.5% (395 FT/NM) to 3400 FT to stay within controlled airspace. (For OBST reason MNM climb gradient 3.6% (219 FT/NM) to 1900 FT) MAX 220 KT IAS in turn at NEGIM. MAX 235 KT IAS in turn at VA801. If unable to comply, inform ATC.	6000 FT. RCF: If no further climb received prior to VA803, climb to CPL cruising level.	When instructed by Værnes TWR, contact Værnes APP 118.600 MHZ

SOLKA 1W (SOLKA ONE WHISKEY DEPARTURE)	Climb on course 267° to 2500 FT, turn left DCT VA803, to VA804, to SOLKA.	MNM climb gradient 5% (304 FT/NM) to 3100 FT. If unable to comply, inform ATC.	6000 FT. RCF: If no further climb received 10 NM prior to SOLKA, climb to CPL cruising level.	When instructed by Værnes TWR, contact Værnes APP 118.600 MHz
EVNEN 1B EVNEN ONE BRAVO DEPARTURE)	To NEGIM on course 267°, to VA801, to VA804, to EVNEN.	MNM climb gradient 6.5% (395 FT/NM) to 3400 FT to stay within controlled airspace. (For OBST reason MNM climb gradient 3.6% (219 FT/NM) to 1900 FT) MAX 220 KT IAS in turn at NEGIM. MAX 235 KT IAS in turn at VA801. If unable to comply, inform ATC.	6000 FT. RCF: If no further climb received prior to VA803, climb to CPL cruising level.	When instructed by Værnes TWR, contact Værnes APP 118.600 MHz
EVNEN 1W EVNEN ONE WHISKEY DEPARTURE)	Climb on course 267° to 2500 FT, turn left DCT VA803, to VA804, to EVNEN.	MNM climb gradient 5% (304 FT/NM) to 3100 FT. MAX 245 KT IAS in turn DCT VA803. If unable to comply, inform ATC.	6000 FT. RCF: If no further climb received prior to VA804, climb to CPL cruising level.	When instructed by Værnes TWR, contact Værnes APP 118.600 MHz
UTUNA 1B (UTUNA ONE BRAVO DEPARTURE)	To NEGIM on course 267°, to VA801, to VA802, to VA805, to UTUNA.	MNM climb gradient 6.5% (395 FT/NM) to 3400 FT to stay within controlled airspace. (For OBST reason MNM climb gradient 3.6% (219 FT/NM) to 1900 FT) MAX 220 KT IAS in turn at NEGIM. MAX 235 KT IAS in turn at VA801. If unable to comply, inform ATC.	6000 FT. RCF: If no further climb received 5NM prior to VA805, climb to CPL cruising level.	When instructed by Værnes TWR, contact Værnes APP 118.600 MHz
UTUNA 1W (UTUNA ONE WHISKEY DEPARTURE)	Climb on course 267° to 2500 FT, turn left DCT VA805, to UTUNA.	MNM climb gradient 5% (304 FT/NM) to 3100 FT. If unable to comply, inform ATC.	6000 FT. RCF: If no further climb received 5 NM prior to VA805, climb to CPL cruising level.	When instructed by Værnes TWR, contact Værnes APP 118.600 MHz