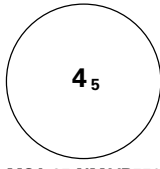
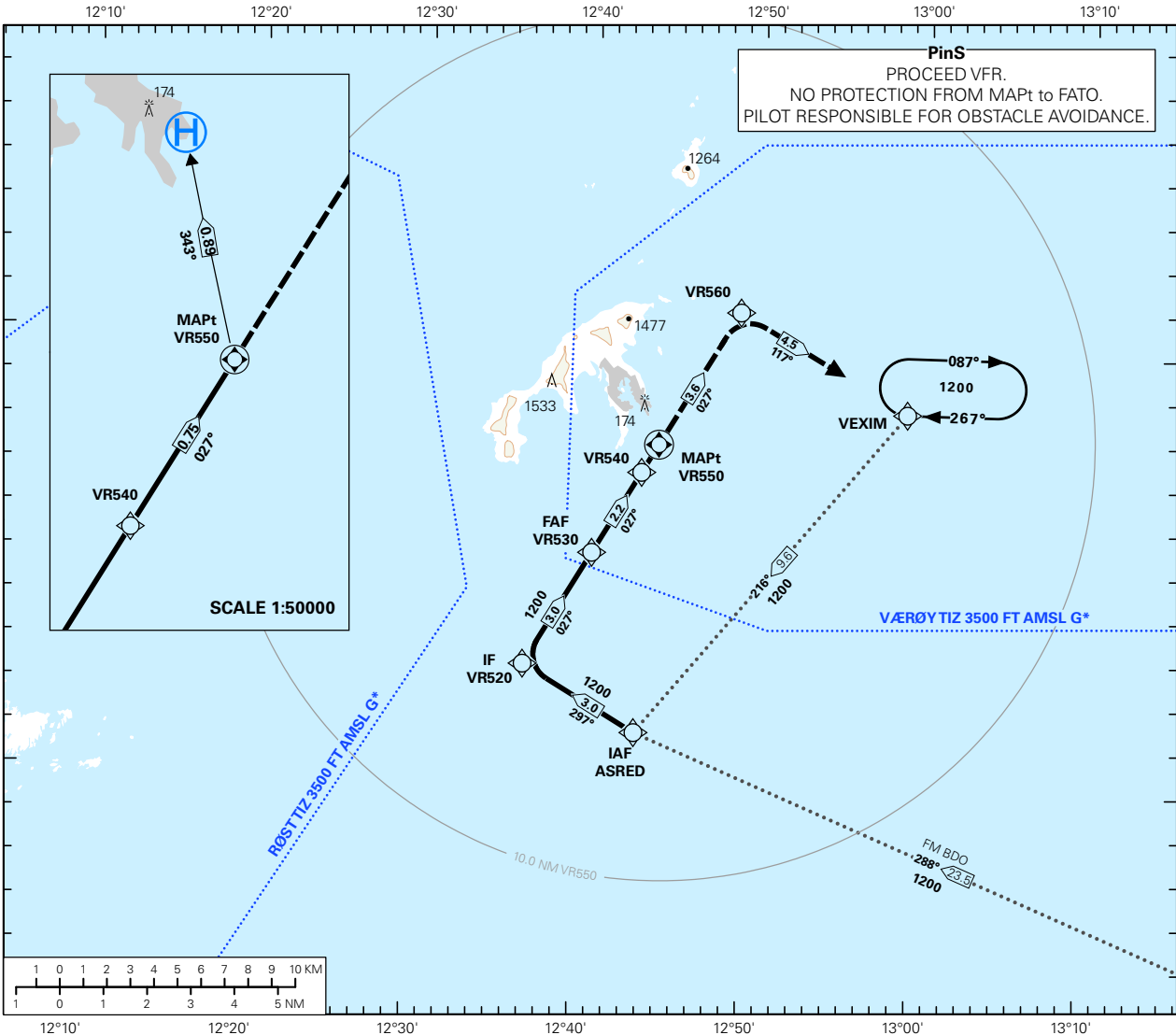
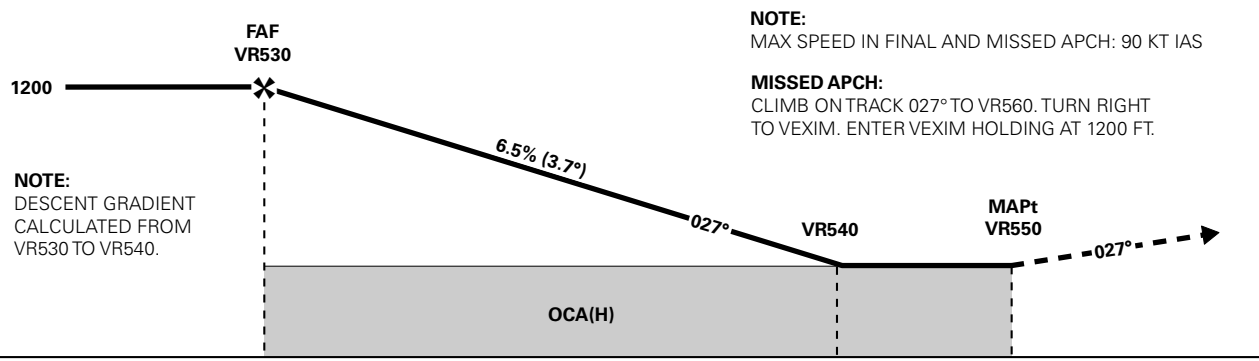


INSTRUMENT APPROACH CHART - ICAO PLAN VIEW SCALE: 1:300 000

 <p>MSA 25 NM VR550</p>	BODØ FIS: 126.450	FATO ELEVATION: 15 FT		<p>VÆRØY VÆRØY</p> <p>RNAV (GNSS) 027</p>
		HGT RELATED TO FATO	DIST IN NM	
		FATO DIMENSIONS: 34 x 59 m	ELEV, ALT AND HGT IN FT	
	BEARINGS ARE MAGNETIC - VAR 3.2 ° E (2010)			



DIST FM VR540	8	7	6	5	4	3	2	1
ALT (HGT)	-	-	-	-	-	-	1140 (1125)	750 (735)



CAT OF ACFT		H				FINAL APPROACH	DIST FM VR530 - VR540: 2.16 NM				
OCA(H) STRAIGHT - IN	LNAV 4.2%*	350 (335)	-	-	-	SPEED	KT	60	70	80	90
			-	-	-	TIME	MIN:SEC	02:10	01:52	01:38	01:27
CIRCLING			-	-	-	ROD	FT/MIN	395	460	525	590

NOTE: *MNM MISSED APCH CLIMB GRADIENT.

CHANGES: MAPt GRADIENT ANNOTATION, RØSTTIZ.

RECOMMENDED RNAV PROCEDURE CODING

ENVR RNAV(GNSS) 027										
Serial Number	Path Descriptor	Waypoint Identifier	Fly-over	Course °M(°T)	MAG VAR	DIST (NM)	Turn Dir	ALT (FT)	Speed (KT)	VPA/TCH
010	IF	ASRED	-	-	-	3.0	-	A1200+	-	-
020	TF	VR520	-	297 (300.0)	-	3.0	-	A1200+	-	-
030	TF	VR530	-	027 (029.9)	-	3.0	R	A1200+	-	-
040	TF	VR540	-	027 (029.9)	-	2.2	-	-	-	-
050	TF	VR550	Y	027(030.0)	-	0.75	-	-	-	-
060	TF	VR560	-	027 (030.0)	-	3.6	-	A1000	-	-
070	TF	VEXIM	-	117 (119.8)	-	4.5	R	A1200	-	-
080	HM	VEXIM	-	267 (270.0)	-	1 MIN	R	A1200	K110-	-

Note: Recommended RNAV procedure coding is provided solely to indicate which procedure design protection areas were used in the Instrument Flight Procedure Design process.