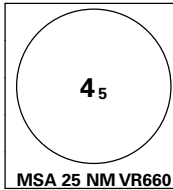
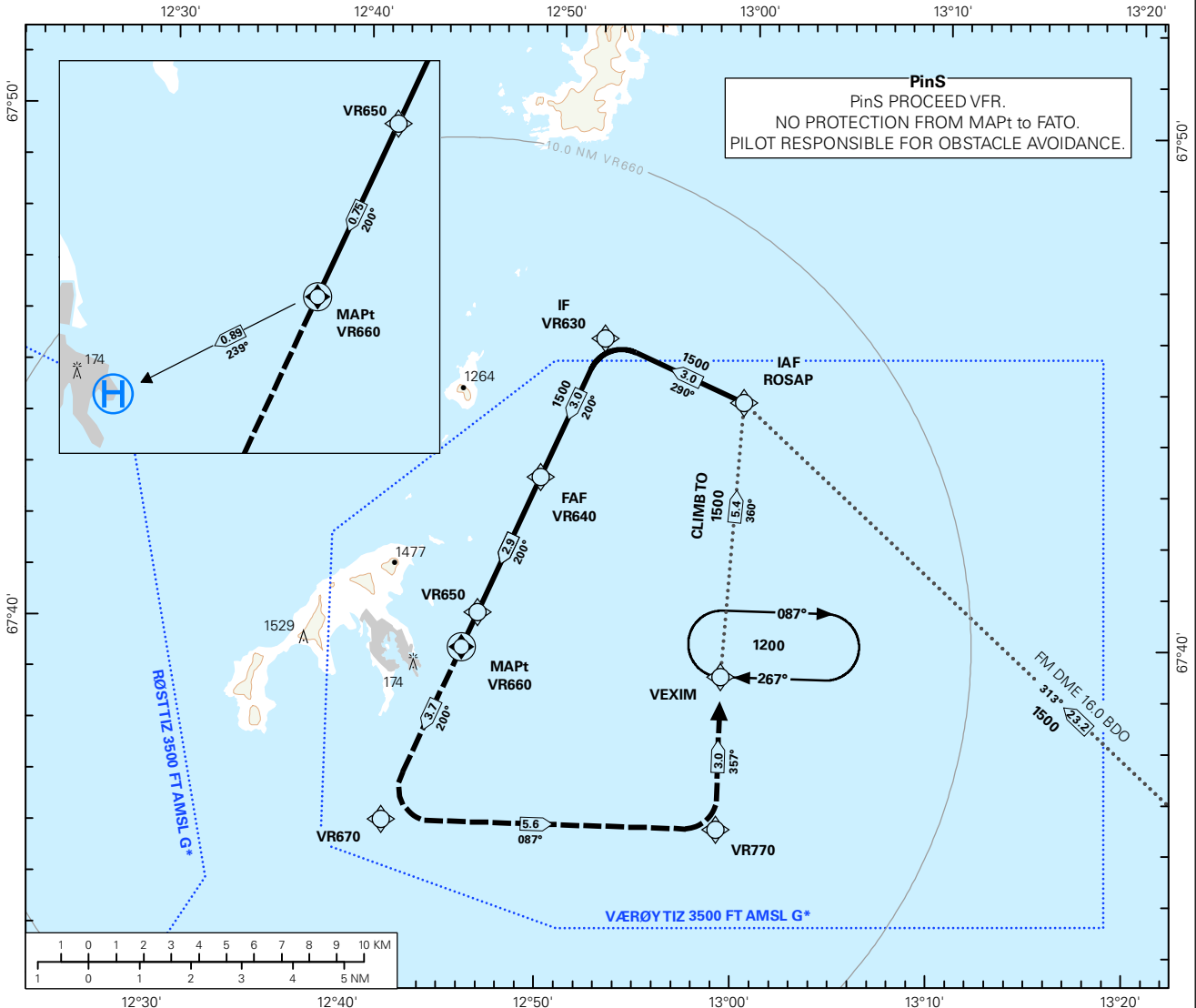


**INSTRUMENT APPROACH CHART - ICAO PLAN VIEW SCALE: 1:250 000**



BODØ FIS: 126.450	FATO ELEVATION: 15 FT
HGT RELATED TO FATO	DIST IN NM
FATO DIMENSIONS: 34 x 59 m	ELEV, ALT AND HGT IN FT
BEARINGS ARE MAGNETIC - VAR 3.2 ° E (2010)	

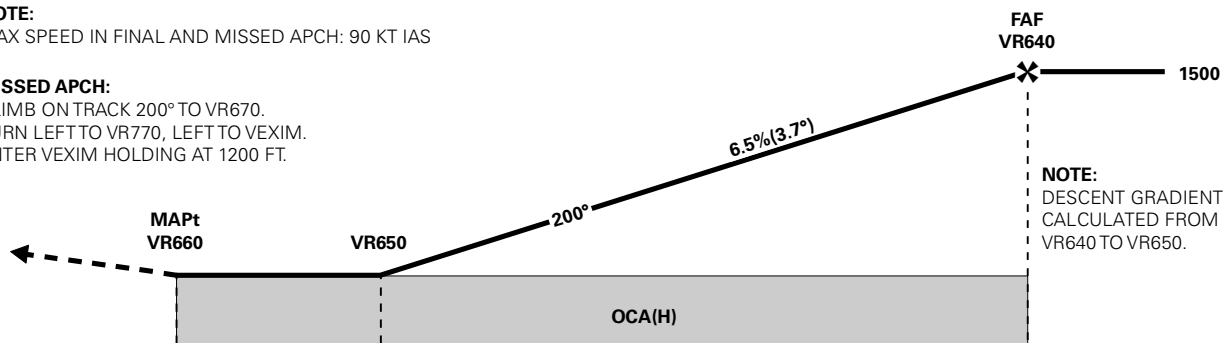
VÆRØY  
**VÆRØY**  
**RNAV (GNSS) 200**  
**TRANSITION ALTITUDE**  
**7000**



DIST FM VR650	8	7	6	5	4	3	2	1
ALT (HGT)	-	-	-	-	-	-	1150 (1135)	750 (735)

**NOTE:**  
 MAX SPEED IN FINAL AND MISSED APCH: 90 KT IAS

**MISSED APCH:**  
 CLIMB ON TRACK 200° TO VR670.  
 TURN LEFT TO VR770, LEFT TO VEXIM.  
 ENTER VEXIM HOLDING AT 1200 FT.



**NOTE:**  
 DESCENT GRADIENT  
 CALCULATED FROM  
 VR640 TO VR650.

VR660 (NM)	→	0	0.75	3.65						
CAT OF ACFT	H	-	-	-	FINAL APPROACH	DIST FM VR640 - VR650: 2.9 NM				
OCA(H) STRAIGHT - IN	LNAV 4.2%**	350 (335)	-	-	SPEED	KT	60	70	80	90
	-	250 (235)*	-	-						
CIRCLING	-	-	-	-	ROD	FT/MIN	395	465	530	595
							02:54	02:30	02:11	01:56

**NOTE:** \* AUTHORIZATION REQUIRED. APPROVED OPERATORS WITH WEATHER RADAR ONLY. \*\* MNM MISSED APPROACH CLIMB GRADIENT.

**RECOMMENDED RNAV PROCEDURE CODING**

<b>ENVR RNAV(GNSS) 200</b>										
Serial Number	Path Descriptor	Waypoint Identifier	Fly-over	Course °M(°T)	MAG VAR	DIST (NM)	Turn Dir	ALT (FT)	Speed (KT)	VPA/TCH
010	IF	ROSAP	-	-	-	-	-	A1500+	-	-
020	TF	VR630	-	290 (293.1)	-	3.0		A1500+	-	-
030	TF	VR640	-	200 (203.1)	-	3.0	L	A1500+	-	-
040	TF	VR650	-	200 (203.1)	-	2.2	-	-	-	-
050	TF	VR660	Y	200 (203.0)	-	0.75	-	-	-	-
060	TF	VR670	-	200 (203.0)	-	3.7	-	-	-	-
070	TF	VR770	-	087 (089.7)	-	5.6	L	-	-	-
080	TF	VEXIM	-	357 (360.0)	-	3.0	L	A1200	-	-
090	HM	VEXIM	-	267 (270.0)	-	1 MIN	R	A1200	K110-	-

Note: Recommended RNAV procedure coding is provided solely to indicate which procedure design protection areas were used in the Instrument Flight Procedure Design process.