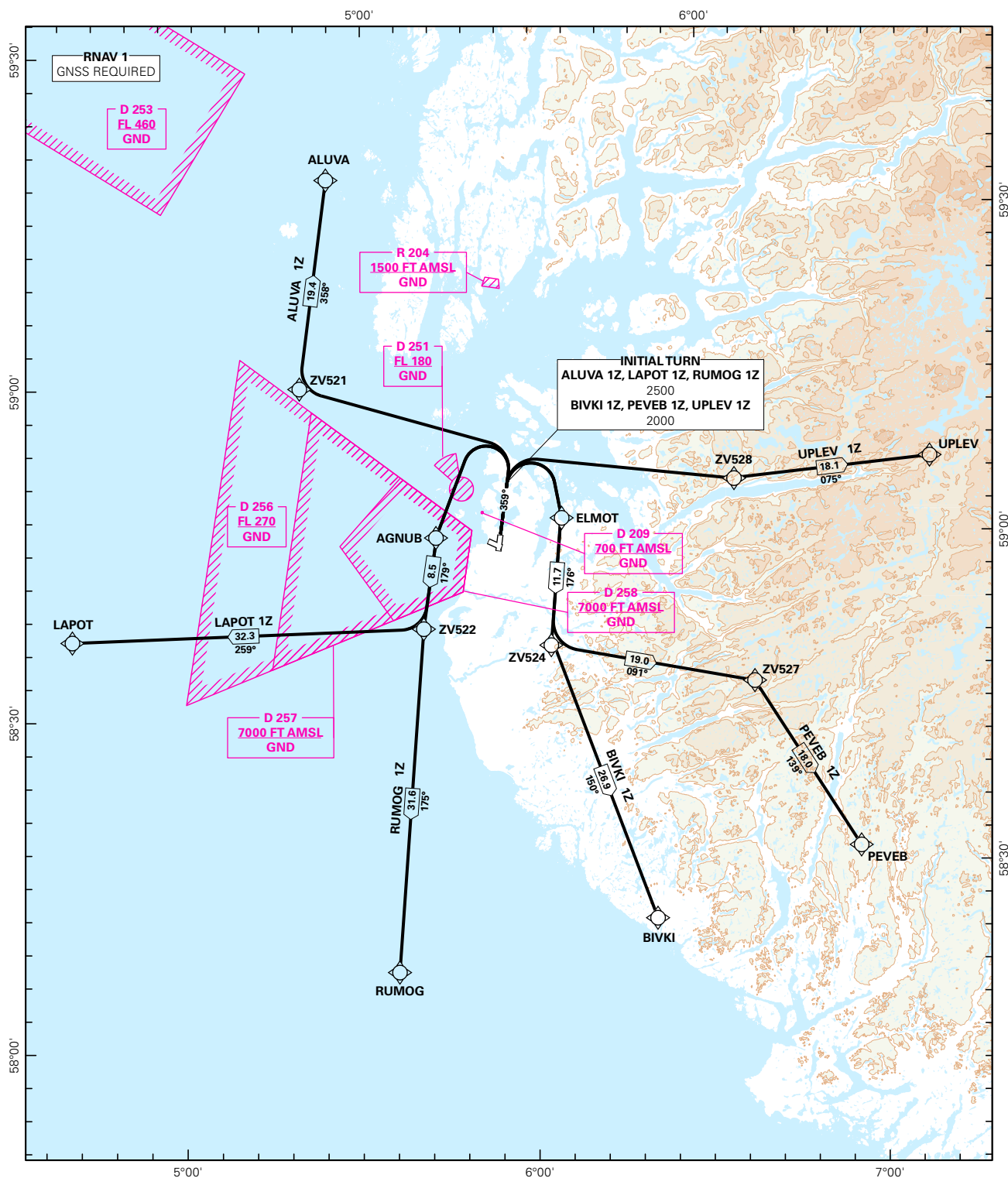


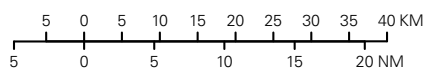
## STANDARD DEPARTURE CHART INSTRUMENT (RNAV 1 SID BASED ON GNSS)

<div style="border: 1px solid black; border-radius: 50%; width: 60px; height: 60px; display: flex; align-items: center; justify-content: center; margin: 0 auto;"> <div style="font-size: 24px; font-weight: bold;">4</div> <div style="font-size: 12px; font-weight: bold;">8</div> </div> <div style="text-align: center; margin-top: 5px;">MSA 25 NM ARP</div>	APP: 119.600 119.400 118.500 122.100	ALT AND ELEV ARE IN FT DIST IN NM		<b>STAVANGER/SOLA</b>  <b>RWY 36</b>  NORWAY	
	ATIS: 126.000				
	TWR: 118.350 122.100				
	GND: 121.750				
	VDF: ALL FREQ	1:1 000 000	VAR: 0.5 ° E (2015)	TA 7000	
ALUVA 1Z, BIVKI 1Z, LAPOT 1Z, PEVEB 1Z, RUMOG 1Z, UPLEV 1Z					



SID DESCRIPTION OVERLEAF  
DESCRIPTION OF WAYPOINTS, REF ENR 4.4

ATS AIRSPACE CLASSIFICATIONS: REF ENR 1.4  
LEGEND: REF GEN 2.3



CHANGES: NEW PROCEDURES.

**STANDARD DEPARTURE ROUTES - INSTRUMENT  
(RNAV 1 SID BASED ON GNSS)**
**STAVANGER/Sola  
RWY 36**

<b>REMARKS:</b>	PROP aircraft only
<b>GENERAL:</b>	Class A GNSS shall not be used. Surveillance service shall be available.
<b>RADIO COMMUNICATION FAILURE:</b>	Squawk A7600. Maintain last assigned LVL until passing limits as described in "CLIMB TO" table for each individual SID, then climb to CPL cruising LVL. Aircraft under vectoring shall, after set transponder to A 7600, proceed in the most direct manner possible to rejoin the CPL route no later than the next significant point, climbing to the CPL cruising LVL taking into consideration the applicable MNM flight ALT.
<b>CLOSE-IN OBSTACLES:</b>	Rising terrain, at 0.6 NM FM THR 18 at the right, and obstacles close to RWY 18, require more than 3.6 % climb gradient, and must be avoided visually or by other means
<b>VECTORIZING/ DIRECT ROUTING:</b>	When being vectored or cleared for DCT routing, the climb gradient(s) stated in SID "RESTRICTIONS"-table apply.
<b>NON RNAV 1 ACFT:</b>	At first contact with Sola GND state "UNABLE RNAV 1 DUE (reason)". OMNI-DIRECTIONAL DEPARTURE available (see ENZV AD 2.24)

DESIGNATOR	ROUTE	RESTRICTIONS	CLIMB TO	CONTACT
<b>ALUVA 1Z</b> (ALUVA ONE ZULU DEPARTURE)	Climb on course 359° to 2500 FT, turn left DCT ZV521, to ALUVA.	MNM climb gradient 3.6 % (219 FT/NM) to 2000 FT.  If unable to comply, inform ATC.	5000 FT  RCF: If no further climb received 5.0 NM prior to ZV521, climb to CPL cruising LVL.	When instructed by Sola TWR, contact Sola APP 119,6 MHz.
<b>LAPOT 1Z</b> (LAPOT ONE ZULU DEPARTURE)	Climb on course 359° to 2500 FT, turn left DCT AGNUB, to ZV522, to LAPOT.	MNM climb gradient 3.6 % (219 FT/NM) to 2000 FT.  If unable to comply, inform ATC.	5000 FT  RCF: If no further climb received prior to AGNUB, climb to CPL cruising LVL.	When instructed by Sola TWR, contact Sola APP 119,6 MHz.
<b>PEVEB 1Z</b> (PEVEB ONE ZULU DEPARTURE)	Climb on course 359° to 2000 FT, turn right DCT ELMOT, to ZV524, to ZV527, to PEVEB.	MNM climb gradient 3.6 % (219 FT/NM) to 2000 FT.  If unable to comply, inform ATC.	5000 FT  RCF: If no further climb received prior to ELMOT, climb to CPL cruising LVL.	When instructed by Sola TWR, contact Sola APP 119,6 MHz.
<b>RUMOG 1Z</b> (RUMOG ONE ZULU DEPARTURE)	Climb on course 359° to 2500 FT, turn left DCT AGNUB, to ZV522, to RUMOG.	MNM climb gradient 3.6 % (219 FT/NM) to 2000 FT.  If unable to comply, inform ATC.	5000 FT  RCF: If no further climb received prior to AGNUB, climb to CPL cruising LVL.	When instructed by Sola TWR, contact Sola APP 119,6 MHz.
<b>BIVKI 1Z</b> (BIVKI ONE ZULU DEPARTURE)	Climb on course 359° to 2000 FT, turn right DCT ELMOT, to ZV524, to BIVKI.	MNM climb gradient 3.6 % (219 FT/NM) to 2000 FT.  If unable to comply, inform ATC.	5000 FT  RCF: If no further climb received prior to ELMOT, climb to CPL cruising LVL.	When instructed by Sola TWR, contact Sola APP 119,6 MHz.
<b>UPLEV 1Z</b> (UPLEV ONE ZULU DEPARTURE)	Climb on course 359° to 2000 FT, turn right DCT ZV528, to UPLEV.	MNM climb gradient 3.8 % (231 FT/NM) to FL80.  If unable to comply, inform ATC.	5000 FT  RCF: If no further climb received 5.0 NM prior to ZV528, climb to CPL cruising LVL.	When instructed by Sola TWR, contact Sola APP 119,6 MHz.