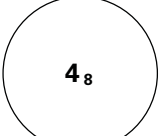
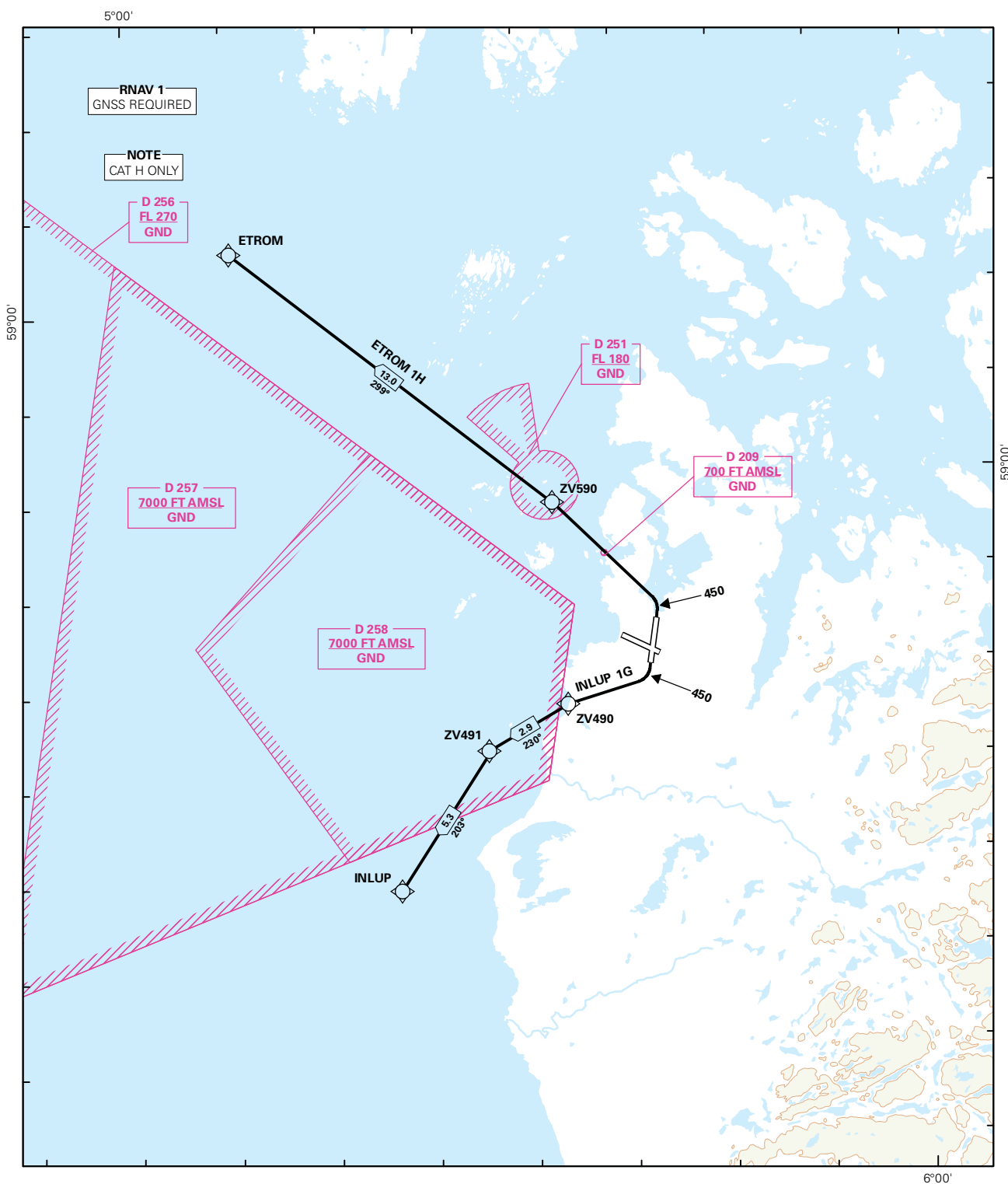


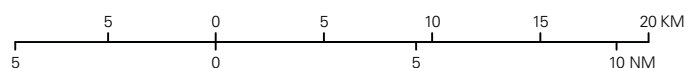
## STANDARD DEPARTURE CHART INSTRUMENT (RNAV 1 SID BASED ON GNSS)

 MSA 25 NM ARP	ATIS: 126.000	ALT AND ELEV ARE IN FT DIST IN NM		<b>STAVANGER/SOLA</b>  <b>RWY 18/36</b>  NORWAY  INLUP 1G, ETROM 1H	
	APP: 119.600 119.400				
	118.500 122.100				
	TWR: 118.350 122.100				
	GND: 121.750				
	VDF: ALL FREQ	1:350 000	VAR: 0.5 ° E (2015)	TA 7000	



SID DESCRIPTION OVERLEAF  
DESCRIPTION OF WAYPOINTS, REF ENR 4.4

ATS AIRSPACE CLASSIFICATIONS: REF ENR 1.4  
LEGEND: REF GEN 2.3



CHANGES: ETROM 1H

Avinor

05 MAR 2015

**STANDARD DEPARTURE ROUTES - INSTRUMENT  
(RNAV 1 SID BASED ON GNSS)**
**STAVANGER/Sola  
RWY 18/36**

<b>REMARKS:</b>	CAT H.
<b>GENERAL:</b>	Class A GNSS shall not be used. Surveillance service shall be available.
<b>RADIO COMMUNICATION FAILURE:</b>	Squawk A7600. Maintain last assigned LVL for 2 minutes, then climb to CPL cruising LVL. Aircraft under vectoring shall, after set transponder to A 7600, proceed in the most direct manner possible to rejoin the CPL route no later than the next significant point, climbing to the CPL cruising LVL taking into consideration the applicable MNM flight ALT.
<b>CLOSE-IN OBSTACLES:</b>	Raising terrain 0 m – 800 m South of THR RWY 36, require more than 7.0% climb gradient, and must be avoided visually or by other means.
<b>VECTORIZING/ DIRECT ROUTING:</b>	When being vectored or cleared for DCT routing, the climb gradient(s) stated in SID “RESTRICTIONS”-table apply.
<b>NON RNAV 1 ACFT:</b>	At first contact with SOLA ATC state “UNABLE RNAV 1 DUE (reason)”. OMNI-DIRECTIONAL DEPARTURE available (see ENZV AD 2.24).

**RWY 18**

DESIGNATOR	ROUTE	RESTRICTIONS	CLIMB TO	CONTACT
<b>INLUP 1G</b>  (INLUP ONE GOLF DEPARTURE)	Climb on course 179° to 450 FT, turn right DCT ZV490, to ZV491, to INLUP.	MNM climb gradient of 7.0% (425 FT/NM) to 700 FT.  If unable to comply, inform ATC.	2000 FT.	When instructed by Sola TWR, contact Sola APP 119,6 MHz.

**RWY 36**

DESIGNATOR	ROUTE	RESTRICTIONS	CLIMB TO	CONTACT
<b>ETROM 1H</b>  (ETROM ONE HOTEL DEPARTURE)	Climb on course 359° to 450 FT, turn left DCT ZV590, to ETROM.	MNM climb gradient of 6.0% (365 FT/NM) to 600 FT.  If unable to comply, inform ATC.	2000 FT.	When instructed by Sola TWR, contact Sola APP 119,6 MHz.