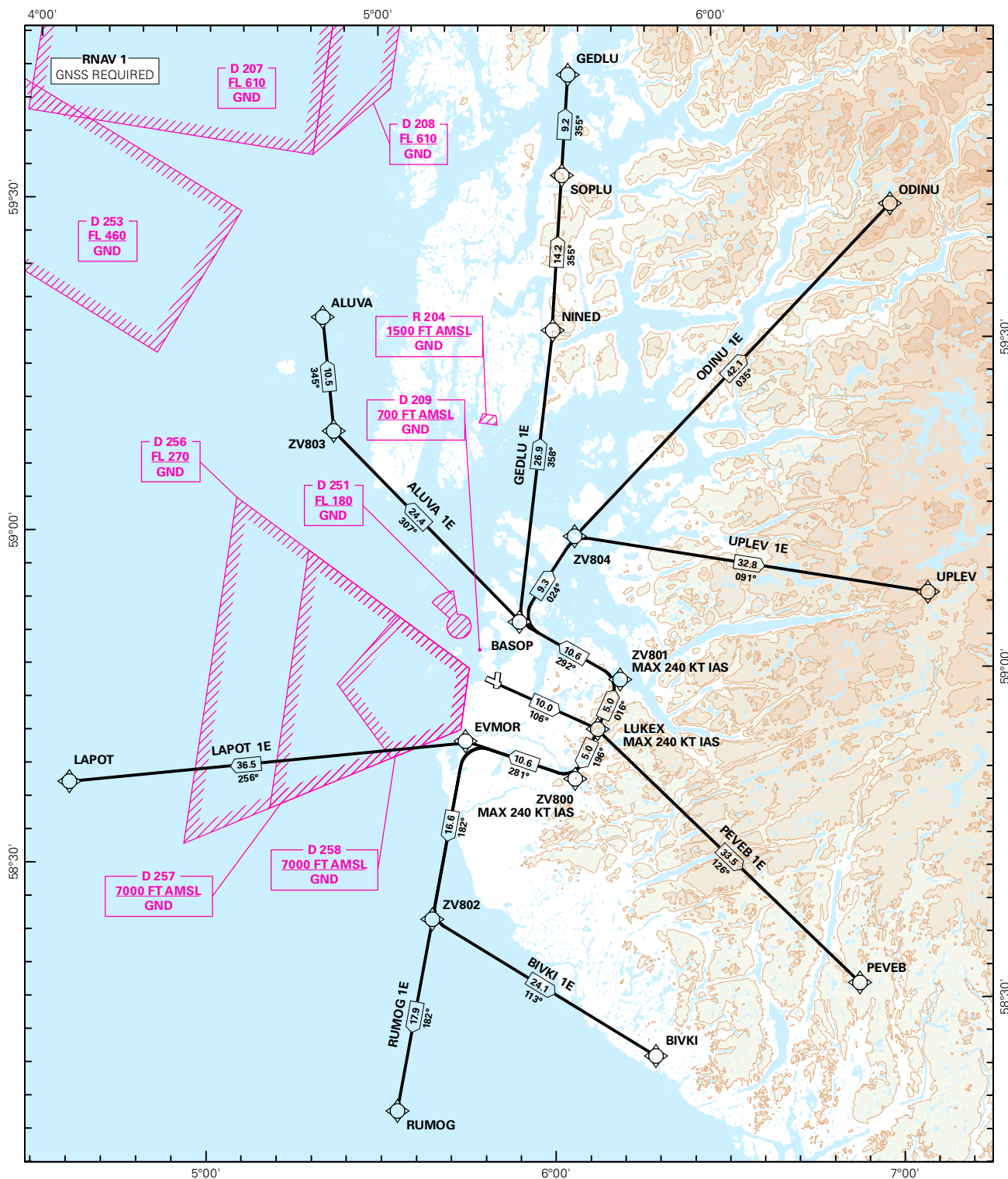


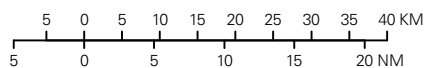
STANDARD DEPARTURE CHART INSTRUMENT (RNAV 1 SID BASED ON GNSS)

<div style="border: 1px solid black; border-radius: 50%; width: 60px; height: 60px; display: flex; align-items: center; justify-content: center; margin: 0 auto;"> <div style="font-size: 24px; font-weight: bold;">4</div> <div style="font-size: 12px; font-weight: bold;">8</div> </div>	ATIS: 126.000	ALT AND ELEV ARE IN FT DIST IN NM		STAVANGER/SOLA	
	APP: 119.600 119.400 118.500 122.100				
	TWR: 118.350 122.100				
	GND: 121.750				
	VDF: ALL FREQ	1:1 000 000	VAR: 0.5 ° E (2015)	TA 7000	RWY 11
MSA 25 NM ARP	ALUVA 1E, BIVKI 1E, GEDLU 1E, LAPOT 1E, ODINU 1E, PEVEB 1E, RUMOG 1E, UPLEV 1E				



SID DESCRIPTION OVERLEAF
DESCRIPTION OF WAYPOINTS, REF ENR 4.4

ATS AIRSPACE CLASSIFICATIONS: REF ENR 1.4
LEGEND: REF GEN 2.3



CHANGES: NEW PROCEDURES.

**STANDARD DEPARTURE ROUTES - INSTRUMENT
(RNAV 1 SID BASED ON GNSS)**
**STAVANGER/Sola
RWY 11**

GENERAL:	Class A GNSS shall not be used. Surveillance service shall be available.
RADIO COMMUNICATION FAILURE:	Squawk A7600. Maintain last assigned LVL until passing limits as described in "CLIMB TO" table for each individual SID, then climb to CPL cruising LVL. Aircraft under vectoring shall, after set transponder to A 7600, proceed in the most direct manner possible to rejoin the CPL route no later than the next significant point, climbing to the CPL cruising LVL taking into consideration the applicable MNM flight ALT.
CLOSE-IN OBSTACLES:	Rising terrain, up to 0.6 NM from THR 29, require more than 5.9% climb gradient, and must be avoided visually or by other means.
VECTORING/ DIRECT ROUTING:	When being vectored or cleared for DCT routing, the climb gradient(s) stated in SID "RESTRICTIONS"-table apply.
NON RNAV 1 ACFT:	At first contact with Sola GND state "UNABLE RNAV 1 DUE (reason)". OMNI-DIRECTIONAL DEPARTURE available (see ENZV AD 2.24)

DESIGNATOR	ROUTE	RESTRICTIONS	CLIMB TO	CONTACT
ALUVA 1E (ALUVA ONE ECHO DEPARTURE)	To LUKEX on course 106°, to ZV801, to BASOP, to ZV803, to ALUVA.	MNM climb gradient 5.9% (358 FT/NM) to 2100 FT. MAX 240 KT IAS at LUKEX and ZV801. If unable to comply, inform ATC.	6000 FT RCF: If no further climb received prior to ZV803, climb to CPL cruising LVL.	When instructed by Sola TWR, contact Sola APP 119,6 MHz.
BIVKI 1E (BIVKI ONE ECHO DEPARTURE)	To LUKEX on course 106°, to ZV800, to EVMOR, turn left to ZV802, to BIVKI.	MNM climb gradient 5.9% (358 FT/NM) to 2100 FT. MAX 240 KT IAS at LUKEX and ZV800. If unable to comply, inform ATC.	6000 FT RCF: If no further climb received prior to ZV802, climb to CPL cruising LVL.	When instructed by Sola TWR, contact Sola APP 119,6 MHz.
GEDLU 1E (GEDLU ONE ECHO DEPARTURE)	To LUKEX on course 106°, to ZV801, to BASOP, to NINED, to SOPLU, to GEDLU.	MNM climb gradient 5.9% (358 FT/NM) to 7000 FT. MAX 240 KT IAS at LUKEX and ZV801. If unable to comply, inform ATC.	6000 FT RCF: If no further climb received prior to NINED, climb to CPL cruising LVL.	When instructed by Sola TWR, contact Sola APP 119,6 MHz.
LAPOT 1E (LAPOT ONE ECHO DEPARTURE)	To LUKEX on course 106°, to ZV800, to EVMOR, to LAPOT.	MNM climb gradient 5.9% (358 FT/NM) to 2100 FT. MAX 240 KT IAS at LUKEX and ZV800. If unable to comply, inform ATC.	6000 FT RCF: If no further climb received 18 NM prior to LAPOT, climb to CPL cruising LVL.	When instructed by Sola TWR, contact Sola APP 119,6 MHz.
ODINU 1E (ODINU ONE ECHO DEPARTURE)	To LUKEX on course 106°, to ZV801, to BASOP, to ZV804, to ODINU.	MNM climb gradient 5.9% (358 FT/NM) to 2100 FT. MAX 240 KT IAS at LUKEX and ZV801. If unable to comply, inform ATC.	6000 FT RCF: If no further climb received prior to ZV804, climb to CPL cruising LVL.	When instructed by Sola TWR, contact Sola APP 119,6 MHz.
PEVEB 1E (PEVEB ONE ECHO DEPARTURE)	To LUKEX on course 106°, to PEVEB.	MNM climb gradient 5.9% (358 FT/NM) to 2100 FT. If unable to comply, inform ATC.	6000 FT RCF: If no further climb received 9 NM prior to PEVEB, climb to CPL cruising LVL.	When instructed by Sola TWR, contact Sola APP 119,6 MHz.
RUMOG 1E (RUMOG ONE ECHO DEPARTURE)	To LUKEX on course 106°, to ZV800, to EVMOR, turn left to ZV802, to RUMOG.	MNM climb gradient 5.9% (358 FT/NM) to 2100 FT. MAX 240 KT IAS at LUKEX and ZV800. If unable to comply, inform ATC.	6000 FT RCF: If no further climb received prior to ZV802, climb to CPL cruising LVL.	When instructed by Sola TWR, contact Sola APP 119,6 MHz.
UPLEV 1E (UPLEV ONE ECHO DEPARTURE)	To LUKEX on course 106°, to ZV801, to BASOP, to ZV804, to UPLEV.	MNM climb gradient 5.9% (358 FT/NM) to 2100 FT. MAX 240 KT IAS at LUKEX and ZV801. If unable to comply, inform ATC.	6000 FT RCF: If no further climb received prior to ZV804, climb to CPL cruising LVL.	When instructed by Sola TWR, contact Sola APP 119,6 MHz.