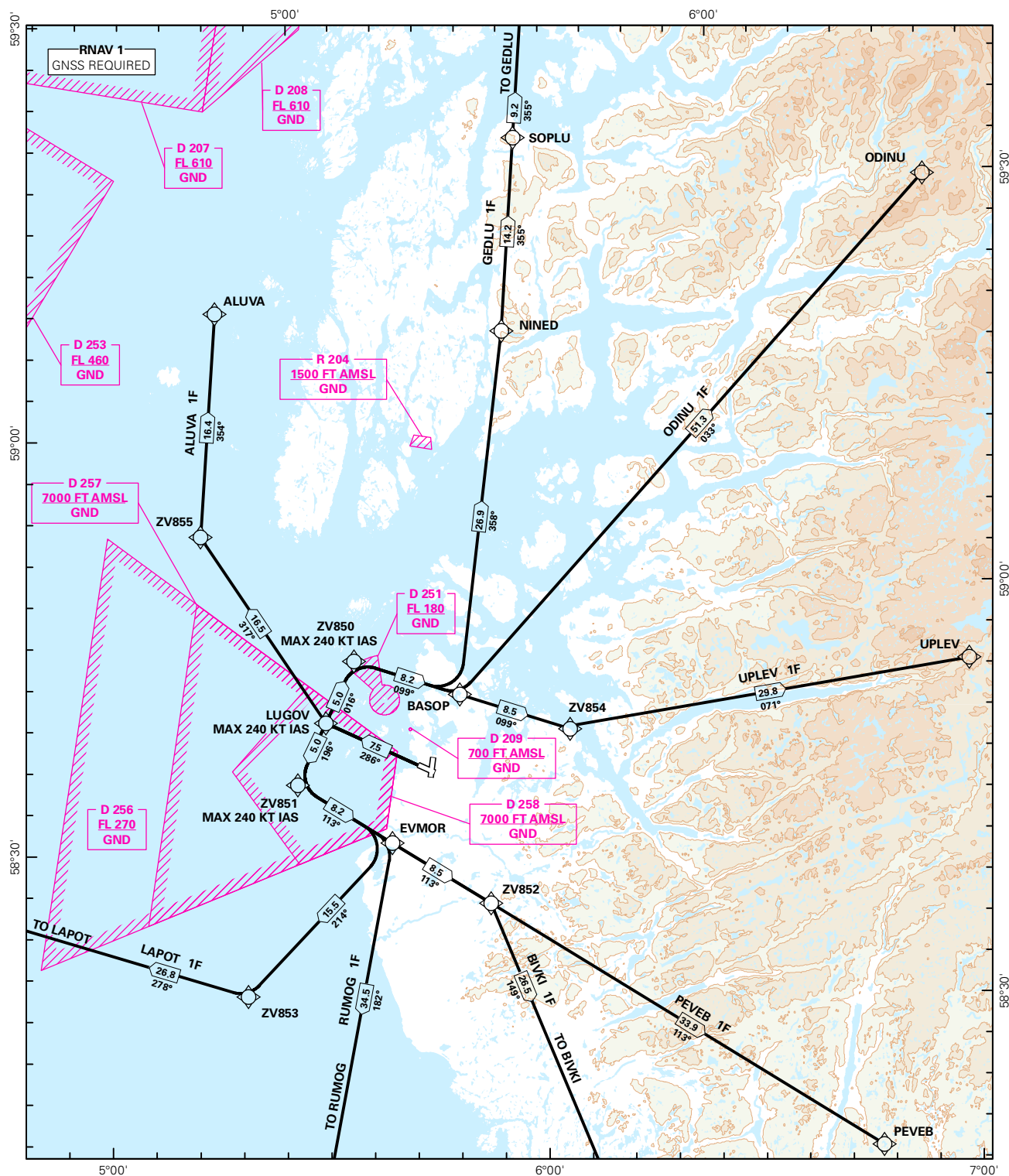


## STANDARD DEPARTURE CHART INSTRUMENT (RNAV 1 SID BASED ON GNSS)

<div style="border: 1px solid black; border-radius: 50%; width: 60px; height: 60px; display: flex; align-items: center; justify-content: center; margin: 0 auto;"> <div style="font-size: 24px; margin: 0 10px;">4</div> <div style="font-size: 24px; margin: 0 10px;">8</div> </div> <div style="text-align: center; margin-top: 5px;">MSA 25 NM ARP</div>	ATIS: 126.000	ALT AND ELEV ARE IN FT DIST IN NM		<b>STAVANGER/SOLA</b>  <b>RWY 29</b>  NORWAY	
	APP: 119.600 119.400				
	TWR: 118.500 122.100				
	GND: 121.750				
	VDF: ALL FREQ	1:800 000	VAR: 0.5 ° E (2015)	TA 7000	
ALUVA 1F, BIVKI 1F, GEDLU 1F, LAPOT 1F, ODINU 1F, PEVEB 1F, RUMOG 1F, UPLEV 1F					



SID DESCRIPTION OVERLEAF  
DESCRIPTION OF WAYPOINTS, REF ENR 4.4

ATS AIRSPACE CLASSIFICATIONS: REF ENR 1.4  
LEGEND: REF GEN 2.3

CHANGES: NEW PROCEDURES.

**STANDARD DEPARTURE ROUTES - INSTRUMENT  
(RNAV 1 SID BASED ON GNSS)**
**STAVANGER/Sola  
RWY 29**

**GENERAL:** Class A GNSS shall not be used.  
Surveillance service shall be available.

**RADIO COMMUNICATION FAILURE:** Squawk A7600. Maintain last assigned level until passing limits as described in "CLIMB TO" table for each individual SID, then climb to CPL cruising LVL. Aircraft under vectoring shall, after set transponder to A 7600, proceed in the most direct manner possible to rejoin the CPL route no later than the next significant point, climbing to the CPL cruising LVL taking into consideration the applicable MNM flight ALT.

**VECTORING/DIRECT ROUTING:** When being vectored or cleared for DCT routing, the climb gradient(s) stated in SID "RESTRICTIONS"-table apply.

**NON RNAV 1 ACFT:** At first contact with Sola GND state "UNABLE RNAV 1 DUE (reason)".  
OMNI-DIRECTIONAL DEPARTURE available (see ENZV AD 2.24)

DESIGNATOR	ROUTE	RESTRICTIONS	CLIMB TO	CONTACT
<b>ALUVA 1F</b> (ALUVA ONE FOXTROT DEPARTURE)	To LUGOV on course 286°, to ZV855, to ALUVA.	MAX 240 KT IAS at LUGOV.	6000 FT  RCF: If no further climb received prior to ZV855, climb to CPL cruising LVL.	When instructed by Sola TWR, contact Sola APP 119,6 MHz.
<b>BIVKI 1F</b> (BIVKI ONE FOXTROT DEPARTURE)	To LUGOV on course 286°, to ZV851, to EVMOR, to ZV852, to BIVKI.	MAX 240 KT IAS at ZV851.	6000 FT  RCF: If no further climb received prior to ZV852, climb to CPL cruising LVL.	When instructed by Sola TWR, contact Sola APP 119,6 MHz.
<b>GEDLU 1F</b> (GEDLU ONE FOXTROT DEPARTURE)	To LUGOV on course 286°, to ZV850, to BASOP, to NINED, to SOPLU, to GEDLU.	MAX 240 KT IAS at ZV850.  Cross SOPLU at or above FL 160 (MNM climb gradient 5.0% (304 FT/NM) to FL 160).  If unable to comply, inform ATC. (MNM climb gradient for obstacle purposes is 3.3% (201 FT/NM)).	6000 FT  RCF: If no further climb received prior to reaching 18 NM FM NINED, climb to CPL cruising LVL.	When instructed by Sola TWR, contact Sola APP 119,6 MHz.
<b>LAPOT 1F</b> (LAPOT ONE FOXTROT DEPARTURE)	To LUGOV on course 286°, to ZV851, to EVMOR, to ZV853, to LAPOT.	MAX 240 KT IAS at ZV851.	6000 FT  RCF: If no further climb received prior to reaching 6 NM FM ZV853, climb to CPL cruising LVL.	When instructed by Sola TWR, contact Sola APP 119,6 MHz.
<b>ODINU 1F</b> (ODINU ONE FOXTROT DEPARTURE)	To LUGOV on course 286°, to ZV850, to BASOP, to ODINU.	MAX 240 KT IAS at ZV850.	6000 FT  RCF: If no further climb received prior to reaching 42 NM FM ODINU, climb to CPL cruising LVL.	When instructed by Sola TWR, contact Sola APP 119,6 MHz.
<b>PEVEB 1F</b> (PEVEB ONE FOXTROT DEPARTURE)	To LUGOV on course 286°, to ZV851, to EVMOR, to ZV852, to PEVEB.	MAX 240 KT IAS at ZV851.	6000 FT  RCF: If no further climb received prior to ZV852, climb to CPL cruising LVL.	When instructed by Sola TWR, contact Sola APP 119,6 MHz.
<b>RUMOG 1F</b> (RUMOG ONE FOXTROT DEPARTURE)	To LUGOV on course 286°, to ZV851, to EVMOR, to RUMOG.	MAX 240 KT IAS at ZV851.	6000 FT  RCF: If no further climb received prior to reaching 25 NM FM RUMOG, climb to CPL cruising LVL.	When instructed by Sola TWR, contact Sola APP 119,6 MHz.
<b>UPLEV 1F</b> (UPLEV ONE FOXTROT DEPARTURE)	To LUGOV on course 286°, to ZV850, to BASOP, to ZV854, to UPLEV.	MAX 240 KT IAS at ZV850.	6000 FT  RCF: If no further climb received prior to reaching ZV854, climb to CPL cruising LVL.	When instructed by Sola TWR, contact Sola APP 119,6 MHz.