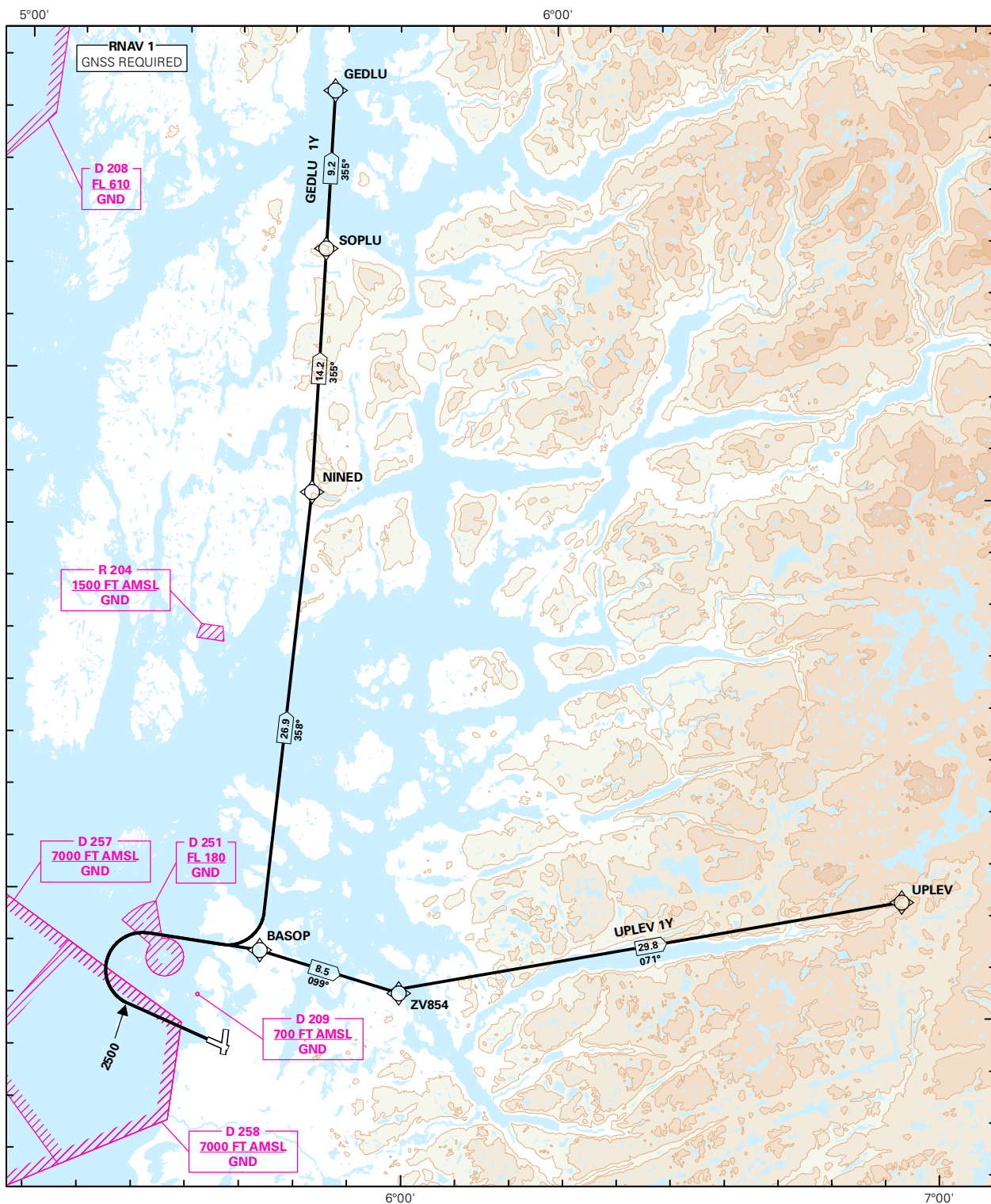


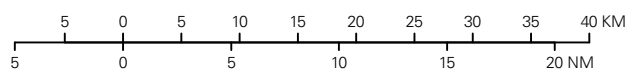
STANDARD DEPARTURE CHART INSTRUMENT (RNAV 1 SID BASED ON GNSS)

<div style="border: 1px solid black; border-radius: 50%; width: 60px; height: 60px; display: flex; align-items: center; justify-content: center; margin: 0 auto;"> <div style="font-size: 24px; font-weight: bold;">4</div> <div style="font-size: 18px; font-weight: bold;">8</div> </div>	ATIS: 126.000	ALT AND ELEV ARE IN FT DIST IN NM		STAVANGER/SOLA RWY 29 NORWAY GEDLU 1Y, UPLEV 1Y	
	APP: 119.600 119.400				
	TWR: 118.350 122.100				
	GND: 121.750				
	VDF: ALL FREQ	1:650 000	VAR: 0.5 ° E (2015)	TA 7000	



SID DESCRIPTION OVERLEAF
DESCRIPTION OF WAYPOINTS, REF ENR 4.4

ATS AIRSPACE CLASSIFICATIONS: REF ENR 1.4
LEGEND: REF GEN 2.3



CHANGES: NEW PROCEDURES.

**STANDARD DEPARTURE ROUTES – INSTRUMENT
(RNAV 1 SID BASED ON GNSS)**
**STAVANGER/Sola
RWY 29**

REMARKS: PROP aircraft only.

GENERAL: Class A GNSS shall not be used.
Surveillance service shall be available.

RADIO COMMUNICATION FAILURE: Squawk A7600. Maintain last assigned LVL until passing limits as described in “CLIMB TO” table for each individual SID, then climb to CPL cruising LVL. Aircraft under vectoring shall, after set transponder to A 7600, proceed in the most direct manner possible to rejoin the CPL route no later than the next significant point, climbing to the CPL cruising LVL taking into consideration the applicable MNM flight ALT.

**VECTORING/
DIRECT ROUTING:** When being vectored or cleared for DCT routing, the climb gradient(s) stated in SID “RESTRICTIONS”-table apply.

NON RNAV 1 ACFT: At first contact with Sola GND state “UNABLE RNAV 1 DUE (reason)”.
OMNI-DIRECTIONAL DEPARTURE available (see ENZV AD 2.24)

DESIGNATOR	ROUTE	RESTRICTIONS	CLIMB TO	CONTACT
GEDLU 1Y (GEDLU ONE YANKEE DEPARTURE)	Climb on course 286° to 2500 FT, turn right DCT BASOP, to NINED, to SOPLU to GEDLU.	Cross SOPLU at or above FL 160 (MNM climb gradient 6.0% (354 FT/NM) to FL 160). If unable to comply, inform ATC. (MNM climb gradient for obstacle purposes is 3.3% (201 FT/NM)).	5000 FT RCF: If no further climb received prior to reaching 18 NM FM NINED, climb to CPL cruising LVL.	When instructed by Sola TWR, contact Sola APP 119,6 MHz.
UPLEV 1Y (UPLEV ONE YANKEE DEPARTURE)	Climb on course 286° to 2500 FT, turn right DCT BASOP, to ZV854, to UPLEV.		5000 FT RCF: If no further climb received prior to ZV854, climb to CPL cruising LVL.	When instructed by Sola TWR, contact Sola APP 119,6 MHz.