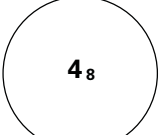
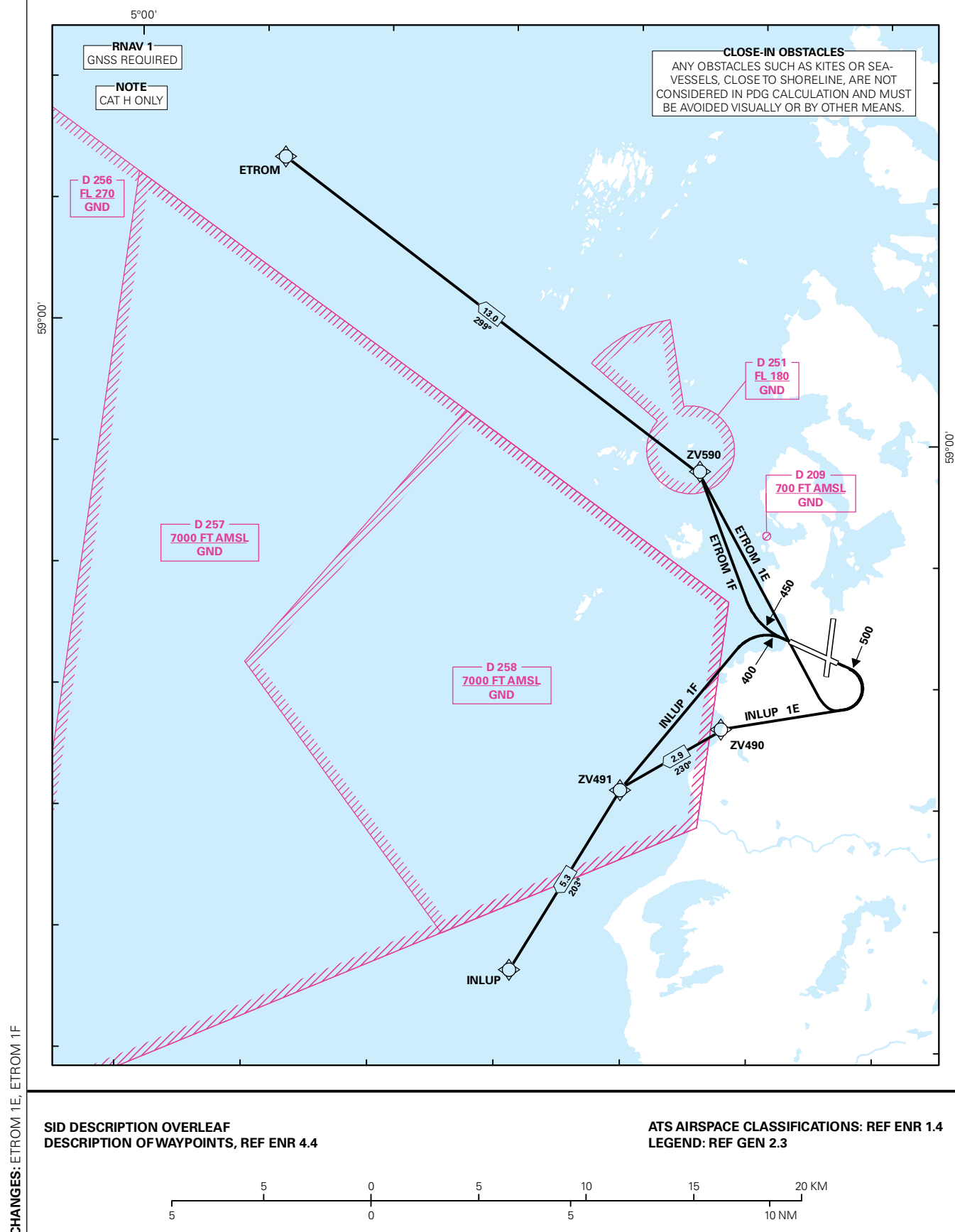


## STANDARD DEPARTURE CHART INSTRUMENT (RNAV 1 SID BASED ON GNSS)

 MSA 25 NM ARP	ATIS: 126.000	ALT AND ELEV ARE IN FT DIST IN NM		STAVANGER/SOLA RWY 11/29 NORWAY	
	APP: 119.600 119.400 118.500 122.100				
	TWR: 118.350 122.100				
	GND: 121.750				
	VDF: ALL FREQ	1:250 000	VAR: 0.5 ° E (2015)	TA 7000	ETROM 1E, ETROM 1F, INLUP 1E, INLUP 1F



**STANDARD DEPARTURE ROUTES - INSTRUMENT  
(RNAV 1 SID BASED ON GNSS)**
**STAVANGER/Sola  
RWY 11/29**

<b>REMARKS:</b>	CAT H.
<b>GENERAL:</b>	Class A GNSS shall not be used. Surveillance service shall be available.
<b>RADIO COMMUNICATION FAILURE:</b>	Squawk A7600. Maintain last assigned LVL for 2 minutes, then climb to CPL cruising LVL. Aircraft under vectoring shall, after set transponder to A 7600, proceed in the most direct manner possible to rejoin the CPL route no later than the next significant point, climbing to the CPL cruising LVL taking into consideration the applicable MNM flight ALT.
<b>CLOSE-IN OBSTACLES:</b>	SID RWY 11: Raising terrain 0 m – 800 m East of THR RWY 29, require more than 7.0% climb gradient, and must be avoided visually or by other means.  SID RWY 29: Any obstacles such as kites or sea-vessels, close to shoreline, are not considered in PDG calculation and must be avoided visually or by other means
<b>VECTORING/ DIRECT ROUTING:</b>	When being vectored or cleared for DCT routing, the climb gradient(s) stated in SID “RESTRICTIONS”-table apply.
<b>NON RNAV 1 ACFT:</b>	At first contact with SOLA ATC state “UNABLE RNAV 1 DUE (reason)”. OMNI-DIRECTIONAL DEPARTURE available (see ENZV AD 2.24).

**RWY 11**

DESIGNATOR	ROUTE	RESTRICTIONS	CLIMB TO	CONTACT
<b>INLUP 1E</b> (INLUP ONE ECHO DEPARTURE)	Climb on course 106° to 500 FT, turn right DCT ZV490, to ZV491, to INLUP.	MNM climb gradient of 6.5% (395 FT/NM) to 700 FT.  If unable to comply, inform ATC.	2000 FT.	When instructed by Sola TWR, contact Sola APP 119,6 MHz.
<b>ETROM 1E</b> (ETROM ONE ECHO DEPARTURE)	Climb on course 106° to 500 FT, turn right* DCT ZV590, to ETROM.  *Right turn towards ZV590 is required due to noise abatement.	MNM climb gradient of 7.0% (425 FT/NM) to 700 FT.  If unable to comply, inform ATC.	2000 FT.	When instructed by Sola TWR, contact Sola APP 119,6 MHz.

**RWY 29**

DESIGNATOR	ROUTE	RESTRICTIONS	CLIMB TO	CONTACT
<b>INLUP 1F</b> (INLUP ONE FOXTROT DEPARTURE)	Climb on course 286° to 400 FT, turn left DCT ZV491, to INLUP.	MNM climb gradient of 5.0% (304 FT/NM).  If unable to comply, inform ATC.	2000 FT.	When instructed by Sola TWR, contact Sola APP 119,6 MHz.
<b>ETROM 1F</b> (ETROM ONE FOXTROT DEPARTURE)	Climb on course 286° to 450 FT, turn right DCT ZV590, to ETROM.	MNM climb gradient of 6.0% (365 FT/NM) to 600 FT.  If unable to comply, inform ATC.	2000 FT.	When instructed by Sola TWR, contact Sola APP 119,6 MHz.