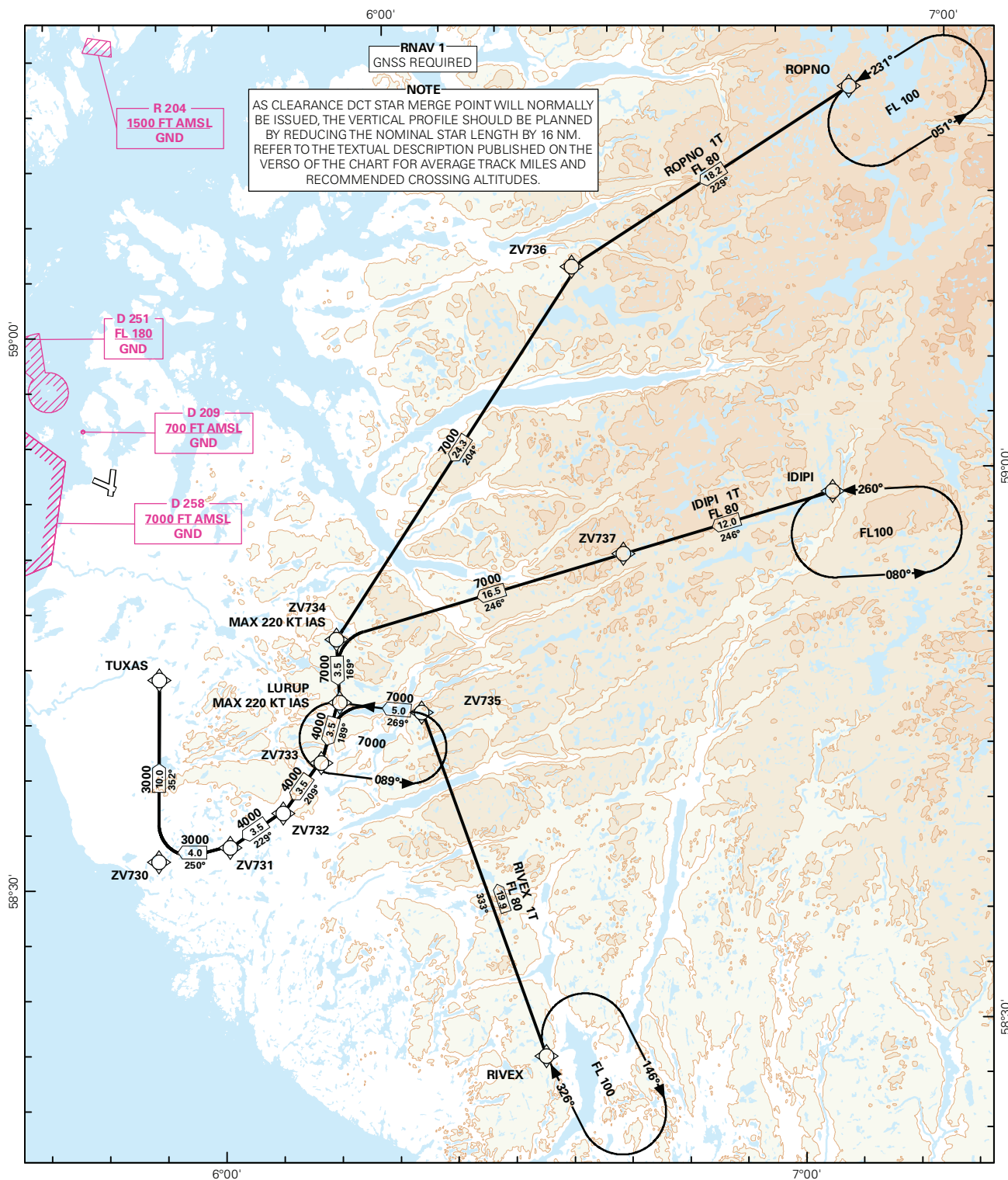
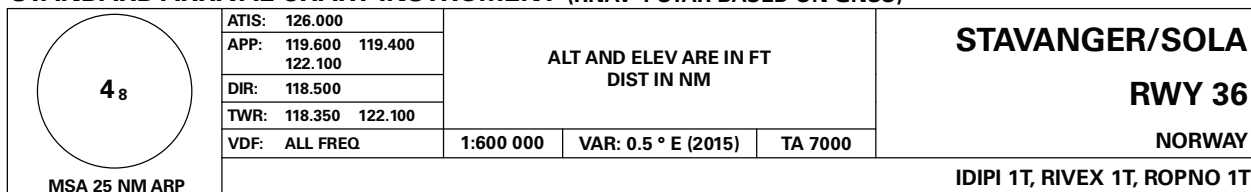
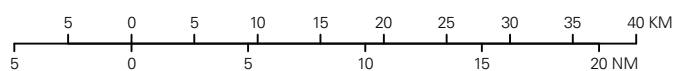


STANDARD ARRIVAL CHART INSTRUMENT (RNAV 1 STAR BASED ON GNSS)

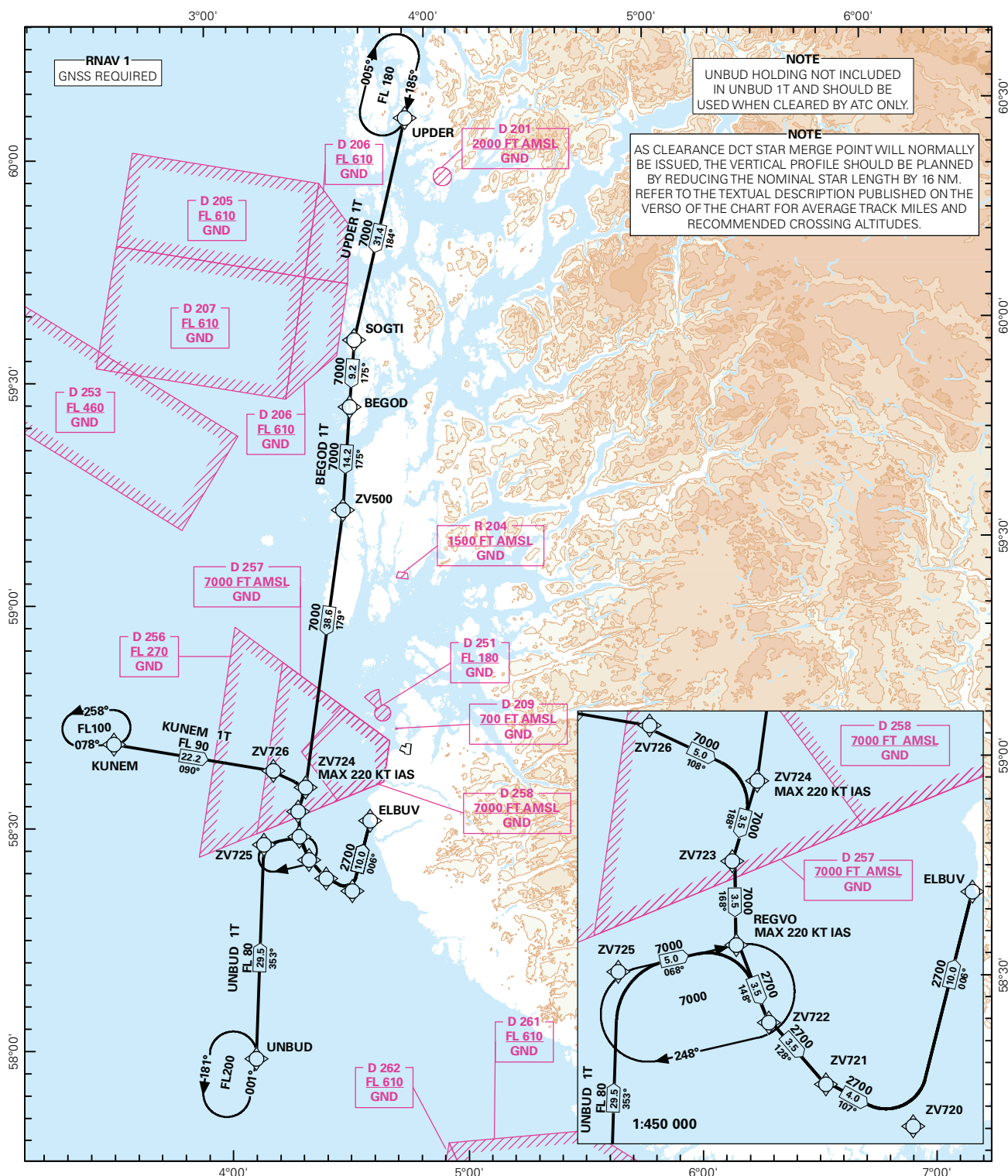
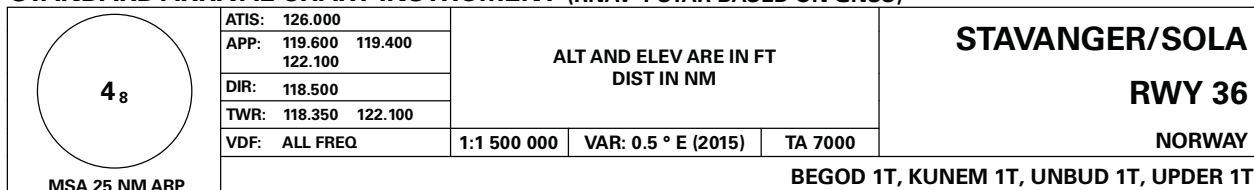


STAR DESCRIPTION OVERLEAF
DESCRIPTION OF WAYPOINTS, REF ENR 4.4

ATS AIRSPACE CLASSIFICATIONS: REF ENR 1.4
LEGEND: REF GEN 2.3

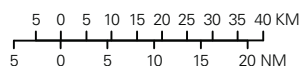


STANDARD ARRIVAL CHART INSTRUMENT (RNAV 1 STAR BASED ON GNSS)



STAR DESCRIPTION OVERLEAF
DESCRIPTION OF WAYPOINTS, REF ENR 4.4

ATS AIRSPACE CLASSIFICATIONS: REF ENR 1.4
LEGEND: REF GEN 2.3



**STANDARD ARRIVAL ROUTES - INSTRUMENT
(RNAV 1 STAR BASED ON GNSS)**
**STAVANGER/Sola
RWY 36**

GENERAL: Class A GNSS shall not be used.
Surveillance service shall be available.

LOSS OF RNAV 1 CAPABILITY: State "UNABLE RNAV 1 DUE (reason)". Request vectoring.

VECTORIZING: When appropriate, vectors will be used for sequencing to final.

DESIGNATOR	ROUTE	RESTRICTIONS	DESCEND	CLEARANCE LIMIT
BEGOD 1T (BEGOD ONE TANGO ARRIVAL)	From BEGOD, to ZV500, to ZV724, to ZV723, to REGVO, to ZV722, to ZV721, to ZV720, turn left to ELBUV.	MAX 220 KT IAS at ZV724. Cross REGVO at or above 7000 FT. Cross ELBUV at or above 2700 FT.	As cleared by ATC.	ELBUV
IDIP1 1T (IDIP1 ONE TANGO ARRIVAL)	From IDIP1 to ZV737, to ZV734, to LURUP, to ZV733, to ZV732, to ZV731, to ZV730, turn right to TUXAS.	Cross IDIP1 at or above FL 100. Cross ZV737 at or above FL 80. MAX 220 KT IAS at ZV734. Cross LURUP at or above 7000 FT. Cross ZV731 at or above 4000 FT. Cross TUXAS at or above 3000 FT.	As cleared by ATC.	TUXAS
KUNEM 1T (KUNEM ONE TANGO ARRIVAL)	From KUNEM to ZV726, to ZV724, to ZV723, to REGVO, to ZV722, to ZV721, to ZV720, turn left to ELBUV.	Cross KUNEM at or above FL 100. Cross ZV726 at or above FL 90. MAX 220 KT IAS at ZV724. Cross REGVO at or above 7000 FT. Cross ELBUV at or above 2700 FT.	As cleared by ATC.	ELBUV
RIVEX 1T (RIVEX ONE TANGO ARRIVAL)	From RIVEX to ZV735, to LURUP, to ZV733, to ZV732, to ZV731, to ZV730, turn right to TUXAS.	Cross RIVEX at or above FL 100. Cross ZV735 at or above FL 80. Cross LURUP at or above 7000 FT. MAX 220 KT IAS at LURUP. Cross ZV731 at or above 4000 FT. Cross TUXAS at or above 3000 FT.	As cleared by ATC.	TUXAS
ROPNO 1T (ROPNO ONE TANGO ARRIVAL)	From ROPNO to ZV736, to ZV734, to LURUP, to ZV733, to ZV732, to ZV731, to ZV730, turn right to TUXAS.	Cross ROPNO at or above FL 100. Cross ZV736 at or above FL 80. MAX 220 KT IAS at ZV734. Cross LURUP at or above 7000 FT. Cross ZV731 at or above 4000 FT. Cross TUXAS at or above 3000 FT.	As cleared by ATC.	TUXAS
UNBUD 1T (UNBUD ONE TANGO ARRIVAL)	From UNBUD to ZV725, to REGVO, to ZV722, to ZV721, to ZV720, turn left to ELBUV.	Cross UNBUD at or above FL 100. Cross ZV725 at or above FL 80. Cross REGVO at or above 7000 FT. MAX 220 KT IAS at REGVO. Cross ELBUV at or above 2700 FT.	As cleared by ATC.	ELBUV
UPDER 1T (UPDER ONE TANGO ARRIVAL)	From UPDER to SOGTI, to BEGOD, to ZV500, to ZV724, to ZV723, to REGVO, to ZV722, to ZV721, to ZV720, turn left to ELBUV.	Cross UPDER at or above FL 180. MAX 220 KT IAS at ZV724. Cross REGVO at or above 7000 FT. Cross ELBUV at or above 2700 FT.	As cleared by ATC.	ELBUV

Note: As clearance DCT STAR merge point will normally be issued, descend should be planned by using the average track miles from the STAR starting point to THR as indicated below.

DESIGNATOR	AVERAGE TRACK MILES (NM)	RECOMMENDED ALTITUDE
BEGOD 1T	74	Cross ZV724 at 7000 FT
IDIP1 1T	51	Cross ZV734 at 7000 FT
KUNEM 2T	50	Cross ZV724 at 7000 FT

RIVEX 1T	46	Cross ZV735 at 7000 FT
ROPNO 1T	64	Cross ZV734 at 7000 FT
UNBUD 1T	53	Cross ZV725 at 7000 FT
UPDER 1T	115	Cross ZV724 at 7000 FT