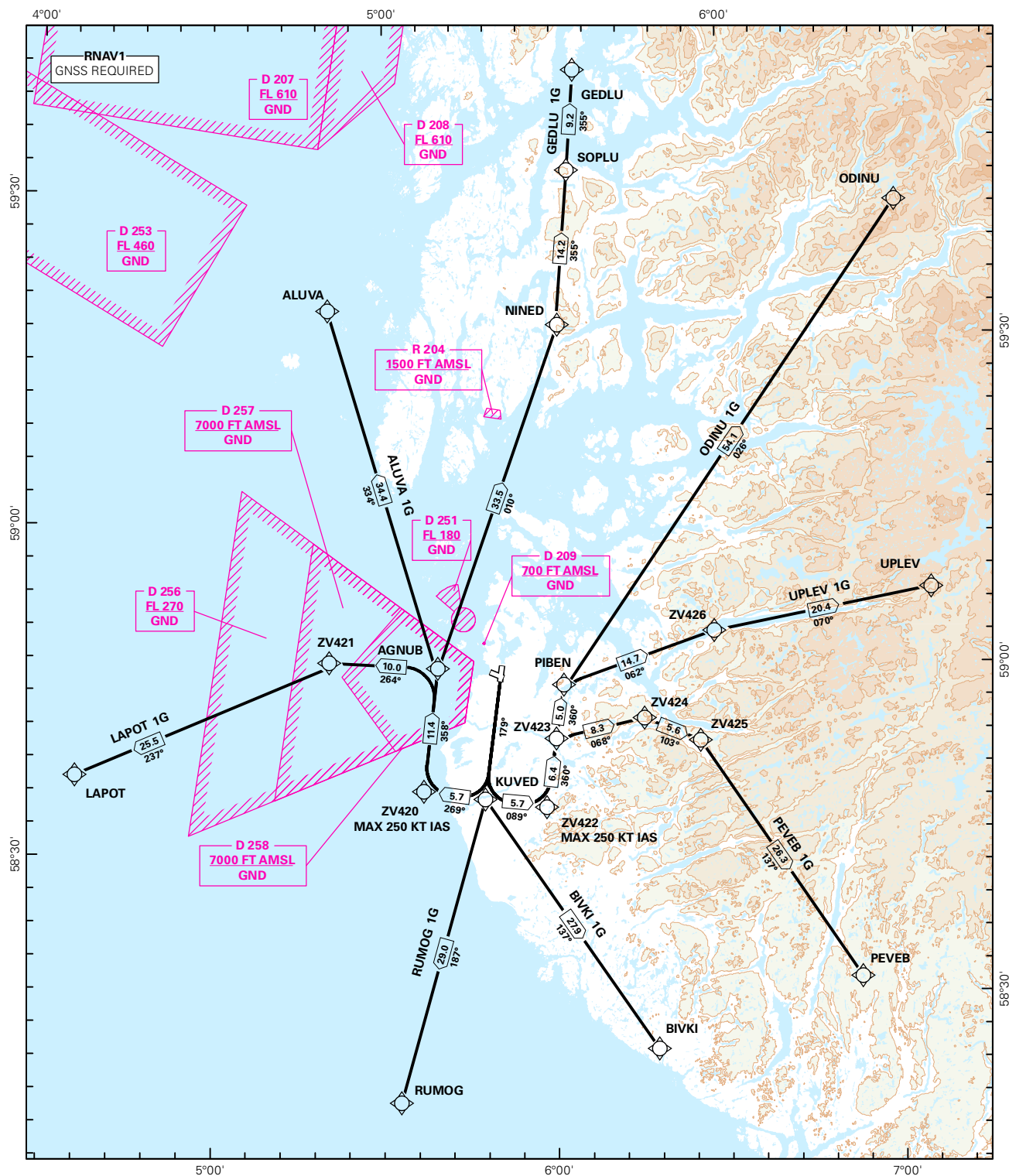


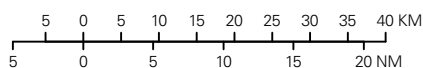
## STANDARD DEPARTURE CHART INSTRUMENT (RNAV 1 SID BASED ON GNSS)

<div><div></div><div>4<sub>8</sub></div></div> <div>MSA 25 NM ARP</div>	ATIS: 126.000	ALT AND ELEV ARE IN FT DIST IN NM			STAVANGER/SOLA  RWY 18  NORWAY	
	APP: 119.600 119.400 118.500 122.100					
	TWR: 118.350 122.100					
	GND: 121.750					
	VDF: ALL FREQ	1:1 000 000	VAR: 0.5 ° E (2015)	TA 7000		
	ALUVA 1G, BIVKI 1G, GEDLU 1G, LAPOT 1G, ODINU 1G, PEVEB 1G, RUMOG 1G, UPLEV 1G					



SID DESCRIPTION OVERLEAF  
DESCRIPTION OF WAYPOINTS, REF ENR 4.4

ATS AIRSPACE CLASSIFICATIONS: REF ENR 1.4  
LEGEND: REF GEN 2.3



CHANGES: NEW PROCEDURES.

**STANDARD DEPARTURE ROUTES - INSTRUMENT  
(RNAV 1 SID BASED ON GNSS)**
**STAVANGER/Sola  
RWY 18**

<b>GENERAL:</b>	Class A GNSS shall not be used. Surveillance service shall be available.
<b>RADIO COMMUNICATION FAILURE:</b>	Squawk A7600. Maintain last assigned LVL until passing limits as described in "CLIMB TO" table for each individual SID, then climb to CPL cruising LVL. Aircraft under vectoring shall, after set transponder to A 7600, proceed in the most direct manner possible to rejoin the CPL route no later than the next significant point, climbing to the CPL cruising LVL taking into consideration the applicable MNM flight ALT.
<b>CLOSE-IN OBSTACLES:</b>	Rising terrain and obstacles, up to 0.5 NM from RWY 36, require more than 4.7% climb gradient, and must be avoided visually or by other means.
<b>VECTORING/ DIRECT ROUTING:</b>	When being vectored or cleared for DCT routing, the climb gradient(s) stated in SID "RESTRICTIONS"-table apply.
<b>NON RNAV 1 ACFT:</b>	At first contact with Sola GND state "UNABLE RNAV 1 DUE (reason)". OMNI-DIRECTIONAL DEPARTURE available (see ENZV AD 2.24)

DESIGNATOR	ROUTE	RESTRICTIONS	CLIMB TO	CONTACT
<b>ALUVA 1G</b> (ALUVA ONE GOLF DEPARTURE)	To KUVED on course 179°, to ZV420, to AGNUB, to ALUVA.	MNM climb gradient 4.7% (286 FT/NM) to 2000 FT. MAX 250 KT IAS at ZV420. If unable to comply, inform ATC.	6000 FT RCF: If no further climb received prior to AGNUB, climb to CPL cruising LVL.	When instructed by Sola TWR, contact Sola APP 119,6 MHz.
<b>BIVKI 1G</b> (BIVKI ONE GOLF DEPARTURE)	To KUVED on course 179°, to BIVKI.	MNM climb gradient 4.7% (286 FT/NM) to 5500 FT. If unable to comply, inform ATC.	6000 FT RCF: If no further climb received prior to 19 NM TO BIVKI, climb to CPL cruising LVL.	When instructed by Sola TWR, contact Sola APP 119,6 MHz.
<b>GEDLU 1G</b> (GEDLU ONE GOLF DEPARTURE)	To KUVED on course 179°, to ZV420, to AGNUB, to NINED, to SOPLU to GEDLU.	MAX 250 KT IAS at ZV420. Cross SOPLU at or above FL 160 (MNM climb gradient 4.7% (286 FT/NM) to FL80). If unable to comply, inform ATC. (MNM climb gradient for obstacle purposes is 4.7% (286 FT/NM) to 2000 FT).	6000 FT RCF: If no further climb received prior to AGNUB, climb to CPL cruising LVL.	When instructed by Sola TWR, contact Sola APP 119,6 MHz.
<b>LAPOT 1G</b> (LAPOT ONE GOLF DEPARTURE)	To KUVED on course 179°, to ZV420, to AGNUB, turn left to ZV421, to LAPOT.	MNM climb gradient 4.7% (286 FT/NM) to 2000 FT. If unable to comply, inform ATC.	6000 FT RCF: If no further climb received prior to AGNUB, climb to CPL cruising LVL.	When instructed by Sola TWR, contact Sola APP 119,6 MHz.
<b>ODINU 1G</b> (ODINU ONE GOLF DEPARTURE)	To KUVED on course 179°, to ZV422, to PIBEN, to ODINU.	MNM climb gradient 4.7% (286 FT/NM) to 2000 FT. MAX 250 KT IAS at ZV422. If unable to comply, inform ATC.	6000 FT RCF: If no further climb received prior to PIBEN, climb to CPL cruising LVL.	When instructed by Sola TWR, contact Sola APP 119,6 MHz.
<b>PEVEB 1G</b> (PEVEB ONE GOLF DEPARTURE)	To KUVED on course 179°, to ZV422, to ZV423, to ZV424, to ZV425, to PEVEB.	MNM climb gradient 4.7% (286 FT/NM) to 2000 FT. MAX 250 KT IAS at ZV422. If unable to comply, inform ATC.	6000 FT RCF: If no further climb received prior to ZV424, climb to CPL cruising LVL.	When instructed by Sola TWR, contact Sola APP 119,6 MHz.
<b>RUMOG 1G</b> (RUMOG ONE GOLF DEPARTURE)	To KUVED on course 179°, to RUMOG.	MNM climb gradient 4.7% (286 FT/NM) to 6700 FT. If unable to comply, inform ATC.	6000 FT RCF: If no further climb received prior to reaching 17 NM FM RUMOG, climb to CPL cruising LVL.	When instructed by Sola TWR, contact Sola APP 119,6 MHz.
<b>UPLEV 1G</b> (UPLEV ONE GOLF DEPARTURE)	To KUVED on course 179°, to ZV422, to PIBEN, to ZV426, to UPLEV.	MNM climb gradient 4.7% (286 FT/NM) to 2000 FT. MAX 250 KT IAS at ZV422. If unable to comply, inform ATC.	6000 FT RCF: If no further climb received prior to PIBEN, climb to CPL cruising LVL.	When instructed by Sola TWR, contact Sola APP 119,6 MHz.