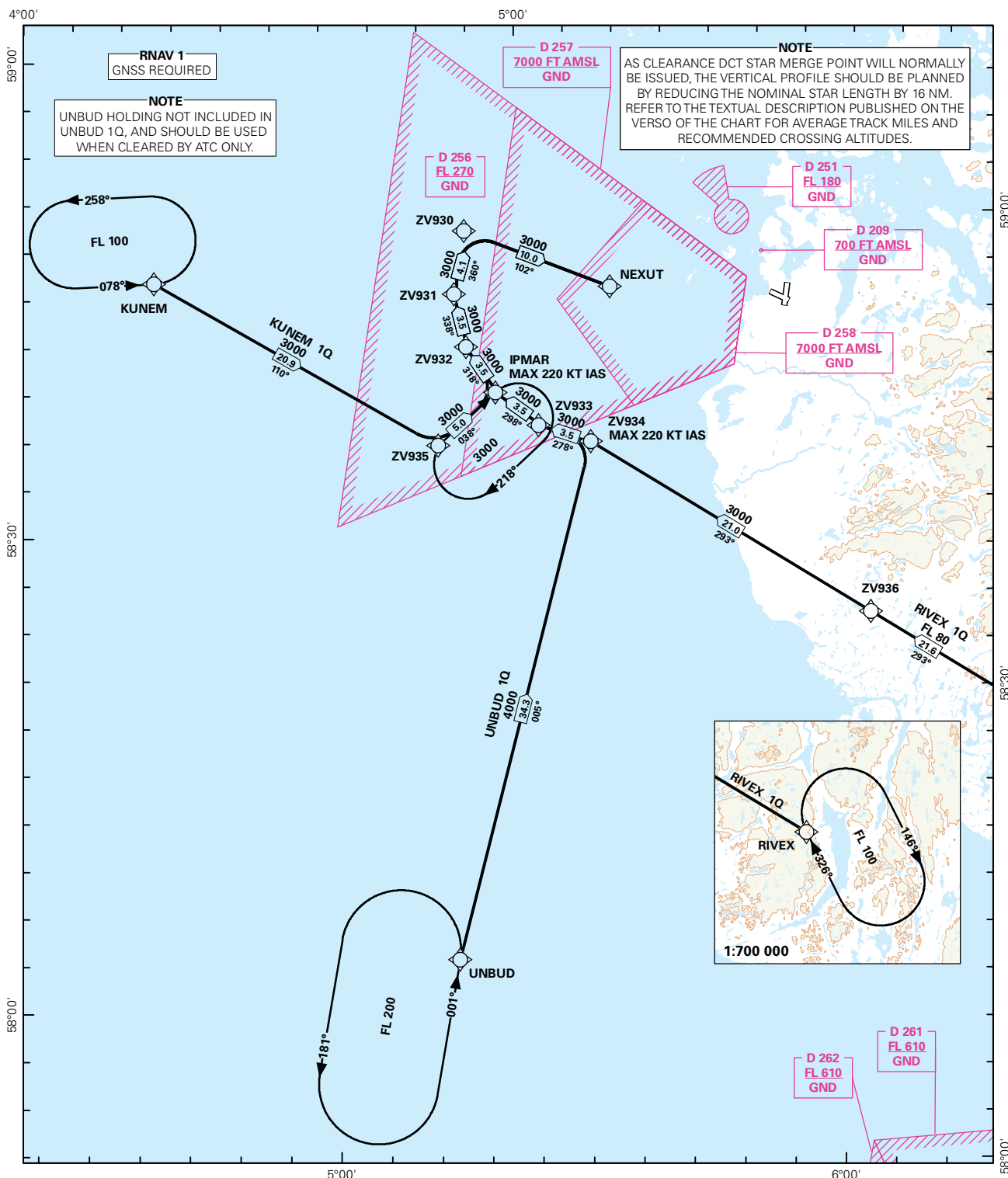


STANDARD ARRIVAL CHART INSTRUMENT (RNAV 1 STAR BASED ON GNSS)

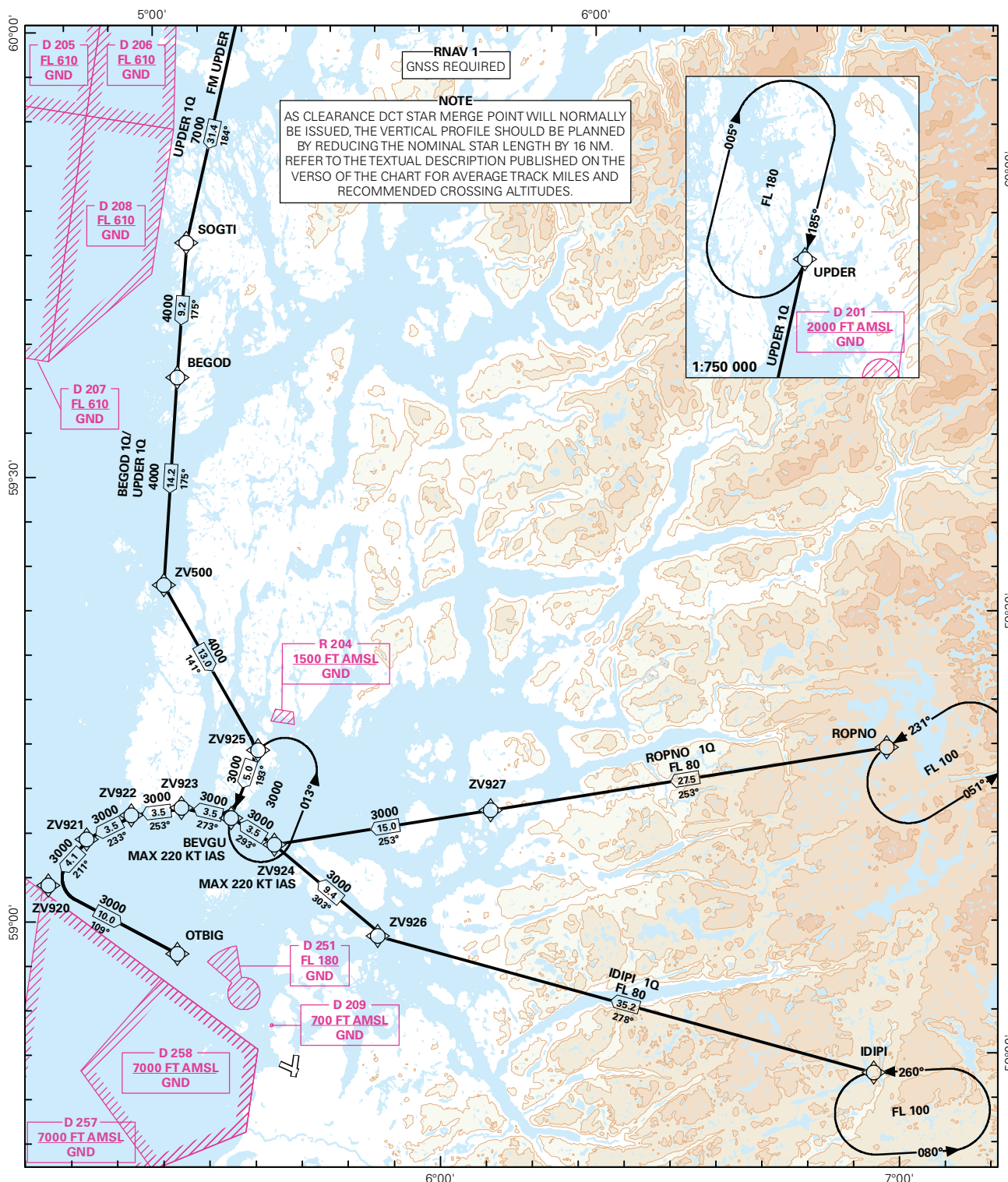
<div><div></div><div>4₈</div></div> <div>MSA 25 NM ARP</div>	ATIS: 126.000		ALT AND ELEV ARE IN FT DIST IN NM			STAVANGER/SOLA RWY 11 NORWAY	
	APP: 119.600 119.400 122.100						
	DIR: 118.500						
	TWR: 118.350 122.100						
	VDF: ALL FREQ		1:700 000	VAR: 0.5 ° E (2015)	TA 7000		
KUNEM 1Q, RIVEX 1Q, UNBUD 1Q							



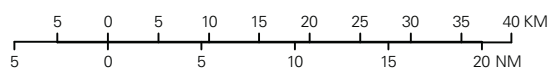
CHANGES: NOTEBOX.

STANDARD ARRIVAL CHART INSTRUMENT (RNAV 1 STAR BASED ON GNSS)

<div><div></div><div>4₈</div></div> <div>MSA 25 NM ARP</div>	ATIS: 126.000	ALT AND ELEV ARE IN FT DIST IN NM			STAVANGER/SOLA RWY 11 NORWAY	
	APP: 119.600 119.400 122.100					
	DIR: 118.500					
	TWR: 118.350 122.100					
	VDF: ALL FREQ	1:750 000	VAR: 0.5 ° E (2015)	TA 7000	BEGOD 1Q, IDIPI 1Q, ROPNO 1Q, UPDER 1Q	



CHANGES: NOTEBOX.



**STANDARD ARRIVAL ROUTES - INSTRUMENT
(RNAV 1 STAR BASED ON GNSS)**
**STAVANGER/Sola
RWY 11**

GENERAL: Class A GNSS shall not be used.
Surveillance service shall be available.

**LOSS OF RNAV 1
CAPABILITY:** Request vectoring.

VECTORING: Vectoring may be used for sequencing.

DESIGNATOR	ROUTE	RESTRICTIONS	DESCEND	CLEARANCE LIMIT
BEGOD 1Q (BEGOD ONE QUEBEC ARRIVAL)	From BEGOD, to ZV500, to ZV925, to BEVGU, to ZV923, to ZV922, to ZV921, to ZV920, turn left to OTBIG.	Cross ZV500 at or above 4000 FT. MAX 220 KT IAS at BEVGU. Cross OTBIG at or above 3000 FT.	As cleared by ATC.	OTBIG
IDIP 1Q (IDIP ONE QUEBEC ARRIVAL)	From IDIP to ZV926, to ZV924, to BEVGU, to ZV923, to ZV922, to ZV921, to ZV920, turn left to OTBIG.	Cross IDIP at or above FL 100. Cross ZV926 at or above FL 80. MAX 220 KT IAS at ZV924. Cross OTBIG at or above 3000 FT.	As cleared by ATC.	OTBIG
KUNEM 1Q (KUNEM ONE QUEBEC ARRIVAL)	From KUNEM to ZV935, to IPMAR, to ZV932, to ZV931, to ZV930, turn right to NEXUT.	Cross KUNEM at or above FL 100. MAX 220 KT IAS at IPMAR. Cross NEXUT at or above 3000 FT.	As cleared by ATC.	NEXUT
RIVEX 1Q (RIVEX ONE QUEBEC ARRIVAL)	From RIVEX to ZV936, to ZV934, to ZV933, to IPMAR, to ZV932, to ZV931, to ZV930, turn right to NEXUT.	Cross RIVEX at or above FL 100. Cross ZV936 at or above FL 80. MAX 220 KT IAS at ZV934. Cross NEXUT at or above 3000 FT.	As cleared by ATC.	NEXUT
ROPNO 1Q (ROPNO ONE QUEBEC ARRIVAL)	From ROPNO to ZV927, to ZV924, to BEVGU, to ZV923, to ZV922, to ZV921, to ZV920, turn left to OTBIG.	Cross ROPNO at or above FL 100. Cross ZV927 at or above FL 80. MAX 220 KT IAS at ZV924. Cross OTBIG at or above 3000 FT.	As cleared by ATC.	OTBIG
UNBUD 1Q (UNBUD ONE QUEBEC ARRIVAL)	From UNBUD to ZV934, to ZV933, to IPMAR, to ZV932, to ZV931, to ZV930, turn right to NEXUT.	Cross UNBUD at or above FL 100. Cross ZV934 at or above 4000 FT. MAX 220 KT IAS at ZV934. Cross NEXUT at or above 3000 FT.	As cleared by ATC.	NEXUT
UPDER 1Q (UPDER ONE QUEBEC ARRIVAL)	From UPDER to SOGTI, to BEGOD, to ZV500, to ZV925, to BEVGU, to ZV923, to ZV922, to ZV921, to ZV920, turn left to OTBIG.	Cross UPDER at or above FL 180. Cross SOGTI at or above 7000 FT. Cross ZV500 at or above 4000 FT. MAX 220 KT IAS at BEVGU. Cross OTBIG at or above 3000 FT.	As cleared by ATC.	OTBIG

Note: As clearance DCT STAR merge point will normally be issued, descend should be planned by using the average track miles from the STAR starting point to THR as indicated below.

DESIGNATOR	AVERAGE TRACK MILES (NM)	RECOMMENDED ALTITUDE
BEGOD 1Q	54	Cross ZV925 at 7000 FT
IDIP 1Q	66	Cross ZV924 at 7000 FT
KUNEM 1Q	45	Cross ZV935 at 7000 FT

RIVEX 1Q	65	Cross ZV934 at 7000 FT
ROPNO 1Q	65	Cross ZV924 at 7000 FT
UNBUD 1Q	57	Cross ZV934 at 7000 FT
UPDER 1Q	95	Cross ZV925 at 7000 FT