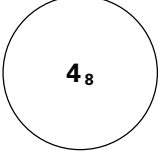
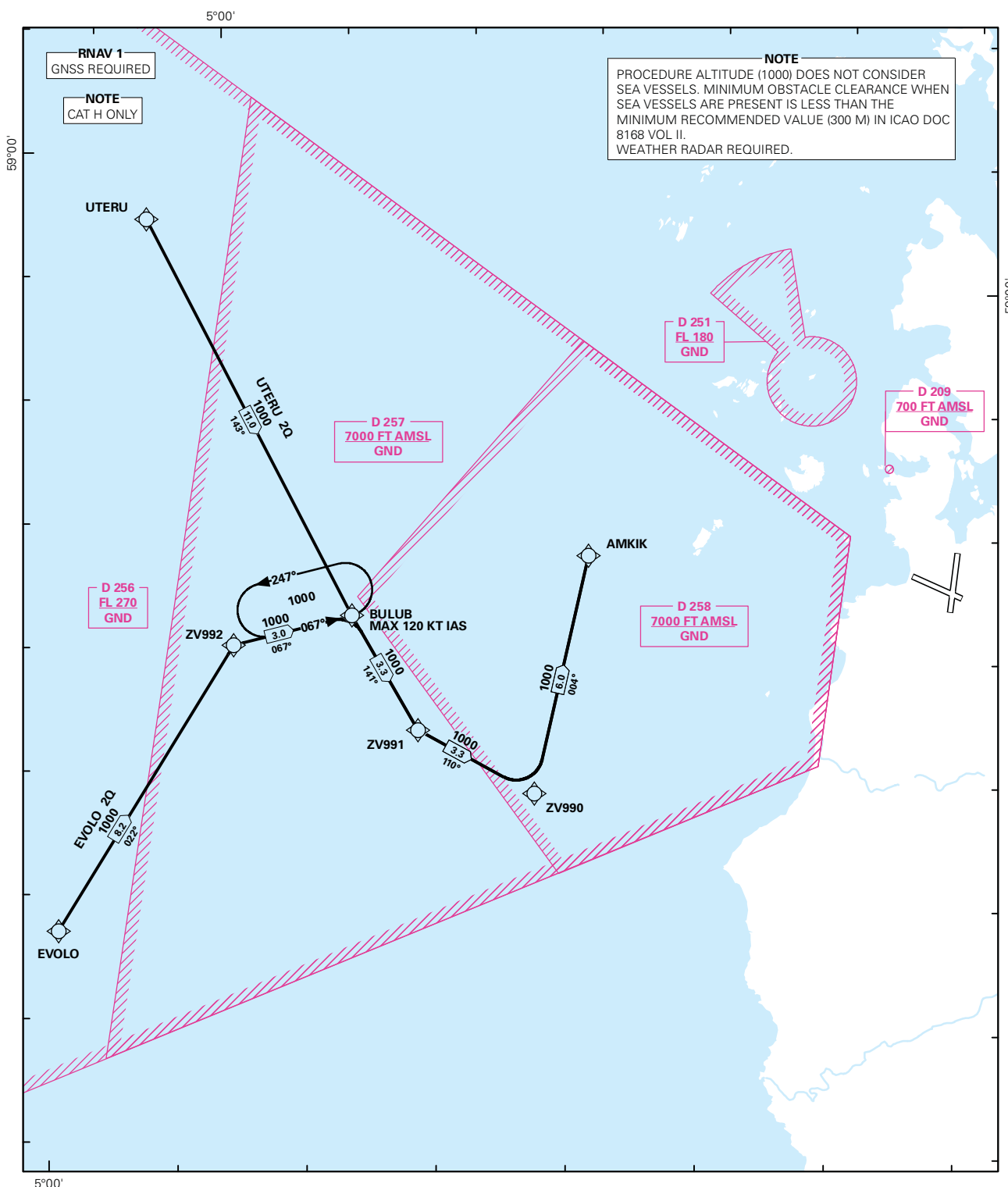


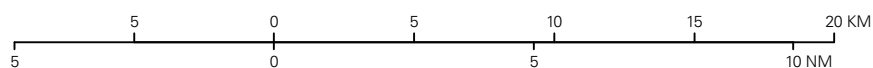
STANDARD ARRIVAL CHART INSTRUMENT (RNAV 1 STAR BASED ON GNSS)

 MSA 25 NM ARP	ATIS: 126.000	ALT AND ELEV ARE IN FT DIST IN NM		STAVANGER/SOLA RWY 11 NORWAY EVOLO 20, UTERU 20	
	APP: 119.600 119.400				
	DIR: 118.500				
	TWR: 118.350 122.100				
	VDF: ALL FREQ	1:270 000	VAR: 0.5 ° E (2015)	TA 7000	



STAR DESCRIPTION OVERLEAF
DESCRIPTION OF WAYPOINTS, REF ENR 4.4

ATS AIRSPACE CLASSIFICATIONS: REF ENR 1.4
LEGEND: REF GEN 2.3



**STANDARD ARRIVAL ROUTES - INSTRUMENT
(RNAV 1 STAR BASED ON GNSS)****STAVANGER/Sola
RWY 11**

REMARKS: CAT H.

GENERAL: Class A GNSS shall not be used.
Surveillance service shall be available.

**LOSS OF RNAV 1
CAPABILITY:** Request vectoring.

VECTORING: Vectoring may be used for sequencing.

**RADIO COMMUNICATION
FAILURE:** Squawk A7600. Proceed on STAR and make APCH to RWY 11.

DESIGNATOR	ROUTE	RESTRICTIONS	DESCEND	CLEARANCE LIMIT
EVOLO 2Q (EVOLO TWO QUEBEC ARRIVAL)	From EVOLO to ZV992, to BULUB, to ZV991, to ZV990, turn left to AMKIK.	Cross AMKIK at or above 1000 FT. MAX 120 KT IAS at BULUB.	As cleared by ATC.	AMKIK
UTERU 2Q (UTERU TWO QUEBEC ARRIVAL)	From UTERU to BULUB, to ZV991, to ZV990, turn left to AMKIK.	Cross AMKIK at or above 1000 FT. MAX 120 KT IAS at BULUB.	As cleared by ATC.	AMKIK