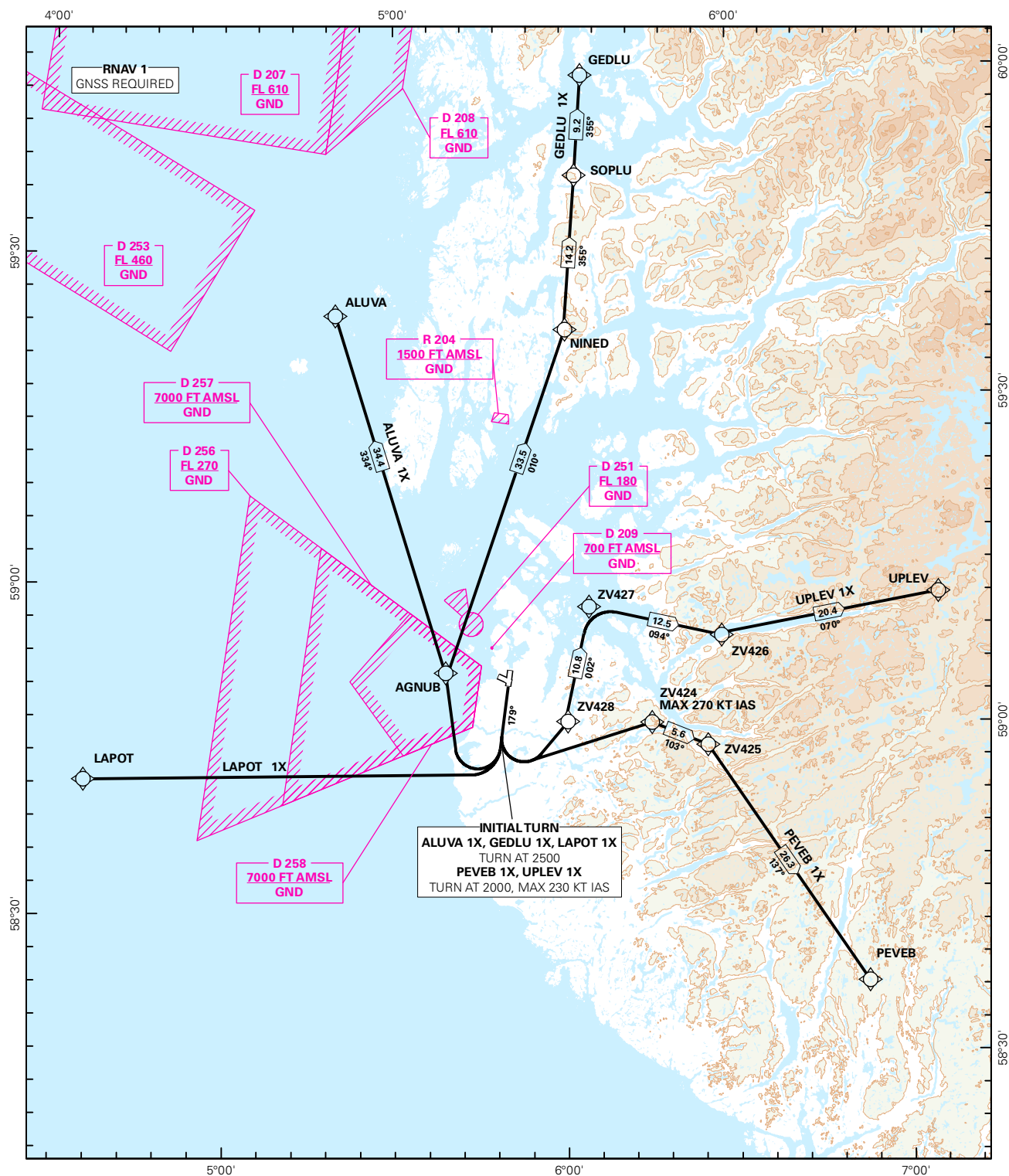


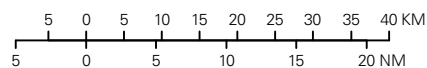
STANDARD DEPARTURE CHART INSTRUMENT (RNAV1 SID BASED ON GNSS)

<div style="border: 1px solid black; border-radius: 50%; width: 60px; height: 60px; display: flex; align-items: center; justify-content: center; margin: 0 auto;"> <div style="font-size: 24px; font-weight: bold;">4</div> <div style="font-size: 12px; font-weight: bold;">8</div> </div>	ATIS: 126.000	ALT AND ELEV ARE IN FT DIST IN NM		STAVANGER/SOLA RWY 18 NORWAY	
	APP: 119.600 119.400				
	118.500 122.100				
	TWR: 118.350 122.100				
	GND: 121.750				
	VDF: ALL FREQ	1:1 000 000	VAR: 0.5 ° E (2015)	TA 7000	
ALUVA 1X, GEDLU 1X, LAPOT 1X, PEVEB 1X, UPLEV 1X					



SID DESCRIPTION OVERLEAF
DESCRIPTION OF WAYPOINTS, REF ENR 4.4

ATS AIRSPACE CLASSIFICATIONS: REF ENR 1.4
LEGEND: REF GEN 2.3



CHANGES: NEW PROCEDURES.

**STANDARD DEPARTURE ROUTES - INSTRUMENT
(RNAV 1 SID BASED ON GNSS)**
**STAVANGER/Sola
RWY 18**

REMARKS:	PROP aircraft only
GENERAL:	Class A GNSS shall not be used. Surveillance service shall be available.
RADIO COMMUNICATION FAILURE:	Squawk A7600. Maintain last assigned LVL until passing limits as described in "CLIMB TO" table for each individual SID, then climb to CPL cruising LVL. Aircraft under vectoring shall, after set transponder to A 7600, proceed in the most direct manner possible to rejoin the CPL route no later than the next significant point, climbing to the CPL cruising LVL taking into consideration the applicable MNM flight ALT.
CLOSE-IN OBSTACLES:	Rising terrain, from RWY 36 to 0.5 NM from RWY 36, require more than 4.7% climb gradient, and must be avoided visually or by other means
VECTORIZING/ DIRECT ROUTING:	When being vectored or cleared for DCT routing, the climb gradient(s) stated in SID "RESTRICTIONS"-table apply.
NON RNAV 1 ACFT:	At first contact with Sola GND state "UNABLE RNAV 1 DUE (reason)". OMNI-DIRECTIONAL DEPARTURE available (see ENZV AD 2.24)

DESIGNATOR	ROUTE	RESTRICTIONS	CLIMB TO	CONTACT
ALUVA 1X (ALUVA ONE X-RAY DEPARTURE)	Climb on course 179° to 2500 FT, turn right DCT AGNUB, to ALUVA.	MNM climb gradient 4.7% (286 FT/NM) to 2000 FT. If unable to comply, inform ATC.	5000 FT RCF: If no further climb received prior to AGNUB, climb to CPL cruising LVL.	When instructed by Sola TWR, contact Sola APP 119,6 MHz.
LAPOT 1X (LAPOT ONE X-RAY DEPARTURE)	Climb on course 179° to 2500 FT, turn right DCT to LAPOT.	MNM climb gradient 4.7% (286 FT/NM) to 5100 FT. If unable to comply, inform ATC.	5000 FT RCF: If no further climb received prior to reaching 28.0 NM FM LAPOT, climb to CPL cruising LVL.	When instructed by Sola TWR, contact Sola APP 119,6 MHz.
GEDLU 1X (GEDLU ONE X-RAY DEPARTURE)	Climb on course 179° to 2500 FT, turn right DCT AGNUB, to NINED, to SOPLU to GEDLU.	Cross SOPLU at or above FL 160 (MNM climb gradient 4.7% (286 FT/NM) to FL160). If unable to comply, inform ATC. (MNM climb gradient for obstacle purposes is 4.7% (286 FT/NM) to 2000 FT).	5000 FT RCF: If no further climb received prior to AGNUB, climb to CPL cruising LVL.	When instructed by Sola TWR, contact Sola APP 119,6 MHz.
PEVEB 1X (PEVEB ONE X-RAY DEPARTURE)	Climb on course 179° to 2000 FT, turn left DCT ZV424, to ZV425, to PEVEB.	MNM climb gradient 4.7% (286 FT/NM) to 2000 FT. MAX 230 KT IAS at 2000 FT turn. MAX 270 KT IAS at ZV424 If unable to comply, inform ATC.	5000 FT RCF: If no further climb received prior to ZV424, climb to CPL cruising LVL.	When instructed by Sola TWR, contact Sola APP 119,6 MHz.
UPLEV 1X (UPLEV ONE X-RAY DEPARTURE)	Climb on course 179° to 2000 FT, turn left DCT ZV428, to ZV427, turn right to ZV426, to UPLEV.	MNM climb gradient 4.7% (286 FT/NM) to 2000 FT. MAX 230 KT IAS at 2000 FT turn. If unable to comply, inform ATC.	5000 FT RCF: If no further climb received prior to ZV428, climb to CPL cruising LVL.	When instructed by Sola TWR, contact Sola APP 119,6 MHz.