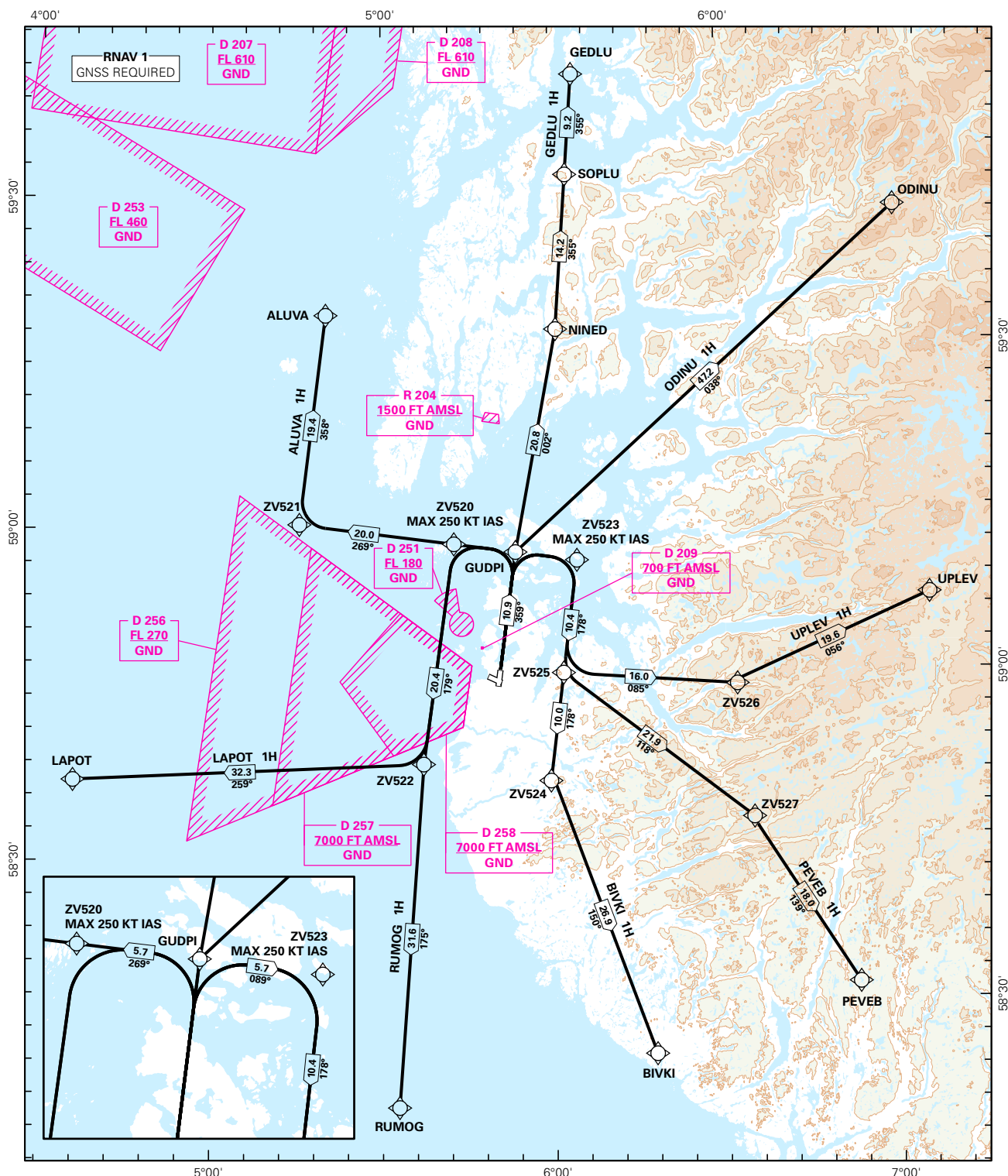


STANDARD DEPARTURE CHART INSTRUMENT (RNAV 1 SID BASED ON GNSS)

<div><div></div><div>4₈</div></div> <div>MSA 25 NM ARP</div>	APP: 119.600 119.400 118.500 122.100	ALT AND ELEV ARE IN FT DIST IN NM			STAVANGER/SOLA RWY 36 NORWAY	
	ATIS: 126.000					
	TWR: 118.350 122.100					
	GND: 121.750					
	VDF: ALL FREQ	1:1 000 000	VAR: 0.5 ° E (2015)	TA 7000		
ALUVA 1H, BIVKI 1H, GEDLU 1H, LAPOT 1H, ODINU 1H, PEVEB 1H, RUMOG 1H, UPLEV 1H						



SID DESCRIPTION OVERLEAF
DESCRIPTION OF WAYPOINTS, REF ENR 4.4

ATS AIRSPACE CLASSIFICATIONS: REF ENR 1.4
LEGEND: REF GEN 2.3

CHANGES: NEW PROCEDURES.

**STANDARD DEPARTURE ROUTES - INSTRUMENT
(RNAV 1 SID BASED ON GNSS)**
**STAVANGER/Sola
RWY 36**

GENERAL:	Class A GNSS shall not be used. Surveillance service shall be available.
RADIO COMMUNICATION FAILURE:	Squawk A7600. Maintain last assigned LVL until passing limits as described in "CLIMB TO" table for each individual SID, then climb to CPL cruising LVL. Aircraft under vectoring shall, after set transponder to A 7600, proceed in the most direct manner possible to rejoin the CPL route no later than the next significant point, climbing to the CPL cruising LVL taking into consideration the applicable MNM flight ALT.
CLOSE-IN OBSTACLES:	Rising terrain at 0,6 NM from THR 18, at the right and obstacles close to the THR 18 requires more than 3.3 % climb gradient, and must be avoided visually or by other means.
VECTORING/ DIRECT ROUTING:	When being vectored or cleared for DCT routing, the climb gradient(s) stated in SID "RESTRICTIONS"-table apply.
NON RNAV 1 ACFT:	At first contact with Sola GND state "UNABLE RNAV 1 DUE (reason)". OMNI-DIRECTIONAL DEPARTURE available (see ENZV AD 2.24)

DESIGNATOR	ROUTE	RESTRICTIONS	CLIMB TO	CONTACT
ALUVA 1H (ALUVA ONE HOTEL DEPARTURE)	To GUDPI on course 359°, to ZV521, to ALUVA.	MNM climb gradient 3.6% (219 FT/NM) to 2000 FT. If unable to comply, inform ATC.	6000 FT RCF: If no further climb received prior to ZV521, climb to CPL cruising LVL.	When instructed by Sola TWR, contact Sola APP 119,6 MHz.
BIVKI 1H (BIVKI ONE HOTEL DEPARTURE)	To GUDPI on course 359°, to ZV523, to ZV524, to BIVKI.	MNM climb gradient 3.6% (219 FT/NM) to 2000 FT. MAX 250 KT IAS at ZV523. If unable to comply, inform ATC.	6000 FT RCF: If no further climb received prior to ZV524, climb to CPL cruising LVL.	When instructed by Sola TWR, contact Sola APP 119,6 MHz.
GEDLU 1H (GEDLU ONE HOTEL DEPARTURE)	To GUDPI on course 359°, to NINED, to SOPLU, to GEDLU.	Cross SOPLU at or above FL 160 (MNM climb gradient 6.0% (365 FT/NM) to FL 160). If unable to comply, inform ATC. (MNM climb gradient for obstacle purposes is 3.6% (219 FT/NM) to 2000 FT).	6000 FT RCF: If no further climb received prior to NINED, climb to CPL cruising LVL.	When instructed by Sola TWR, contact Sola APP 119,6 MHz.
LAPOT 1H (LAPOT ONE HOTEL DEPARTURE)	To GUDPI on course 359°, to ZV520, to ZV522, to LAPOT.	MNM climb gradient 3.6% (219 FT/NM) to 2000 FT. MAX 250 KT IAS at ZV520 If unable to comply, inform ATC.	6000 FT RCF: If no further climb received prior to ZV522, climb to CPL cruising LVL.	When instructed by Sola TWR, contact Sola APP 119,6 MHz.
ODINU 1H (ODINU ONE HOTEL DEPARTURE)	To GUDPI on course 359°, to ODINU.	MNM climb gradient 3.6% (219 FT/NM) to 2000 FT. If unable to comply, inform ATC.	6000 FT RCF: If no further climb received prior to 28.0 NM FM ODINU, climb to CPL cruising LVL.	When instructed by Sola TWR, contact Sola APP 119,6 MHz.
PEVEB 1H (PEVEB ONE HOTEL DEPARTURE)	To GUDPI on course 359°, to ZV523, to ZV525, to ZV527, to PEVEB.	MNM climb gradient 3.6% (219 FT/NM) to 2000 FT. MAX 250 KT IAS at ZV523. If unable to comply, inform ATC.	6000 FT RCF: If no further climb received prior to ZV525, climb to CPL cruising LVL.	When instructed by Sola TWR, contact Sola APP 119,6 MHz.
RUMOG 1H (RUMOG ONE HOTEL DEPARTURE)	To GUDPI on course 359°, to ZV520, to ZV522, to RUMOG.	MNM climb gradient 3.6% (219 FT/NM) to 2000 FT. MAX 250 KT IAS at ZV520 If unable to comply, inform ATC.	6000 FT RCF: If no further climb received prior to ZV522, climb to CPL cruising LVL.	When instructed by Sola TWR, contact Sola APP 119,6 MHz.
UPLEV 1H (UPLEV ONE HOTEL DEPARTURE)	To GUDPI on course 359°, to ZV523, to ZV525, to ZV526, to UPLEV.	MNM climb gradient 3.6% (219 FT/NM) to 2000 FT. MAX 250 KT IAS at ZV523. If unable to comply, inform ATC.	6000 FT RCF: If no further climb received prior to ZV525, climb to CPL cruising LVL.	When instructed by Sola TWR, contact Sola APP 119,6 MHz.