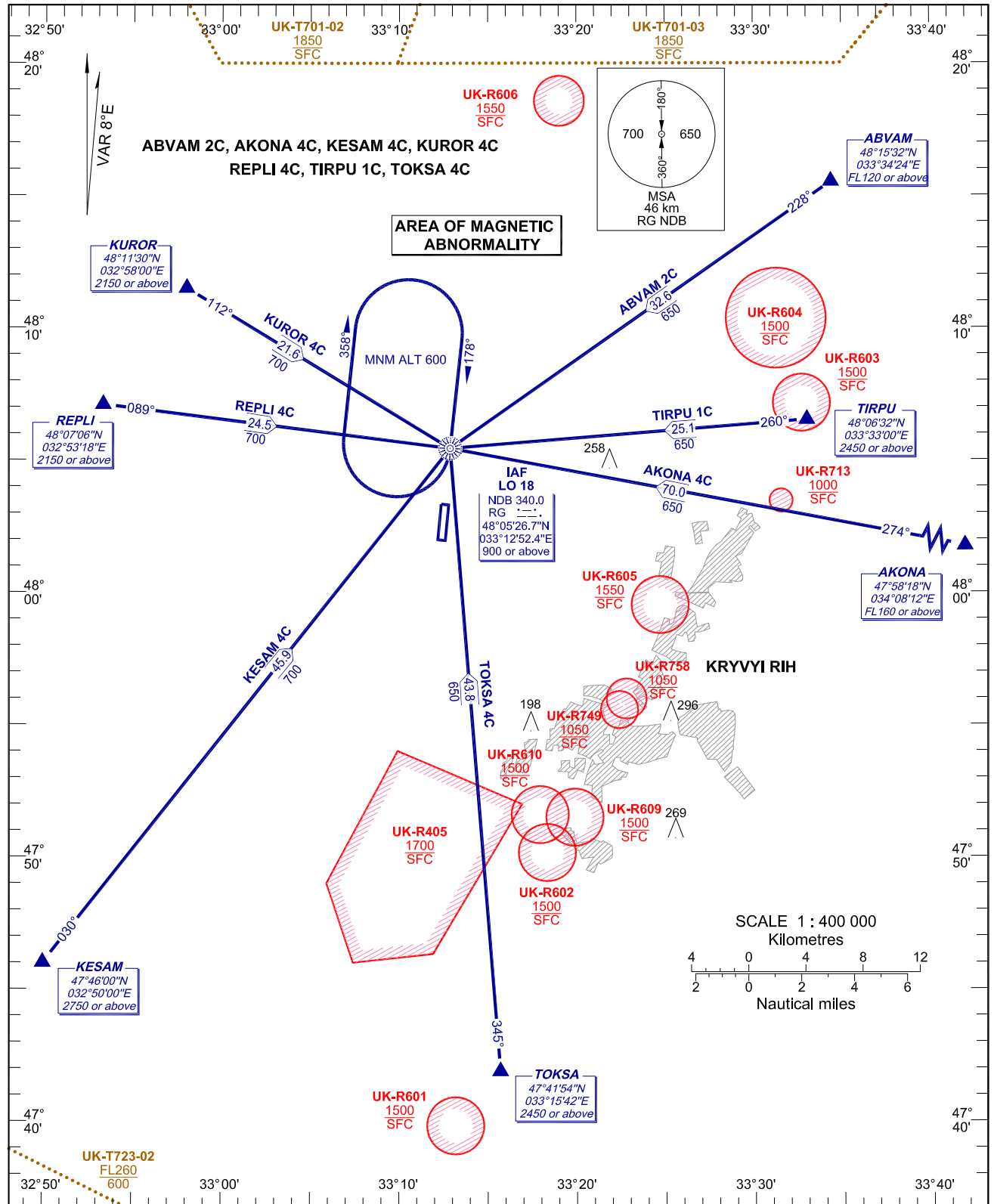


STANDARD DEPARTURE CHART
INSTRUMENT (STAR)-ICAOTRANSITION LEVEL: by ATC
TRANSITION ALT: 3050

TWR 120.300

KRYVYI RIH/Lozuvatka
RWY 18

NOTE:

1. RWY 18 admitted for visual approach only.

CHANGE: VAR 8°E; NOTE.

BEARINGS AND TRACKS ARE MAGNETIC
ALTITUDES, HEIGHTS AND ELEVATIONS ARE IN METRES
DISTANCES ARE IN KILOMETRES

STAR RWY 18

Designator	Route	Altitude	Remarks
ABVAM 2C ABVAM TWO CHARLIE	On track 228° to IAF RG NDB, then according to approach chart	Cross ABVAM at FL120 or above, IAF RG NDB at 900 or above	RWY 18 admitted for visual approach only
AKONA 4C AKONA FOUR CHARLIE	On track 274° to IAF RG NDB, then according to approach chart	Cross AKONA at FL160 or above, IAF RG NDB at 900 or above	RWY 18 admitted for visual approach only
KESAM 4C KESAM FOUR CHARLIE	On track 030° to IAF RG NDB, then according to approach chart	Cross KESAM at 2750 or above, IAF RG NDB at 900 or above	RWY 18 admitted for visual approach only
KUROR 4C KUROR FOUR CHARLIE	On track 112° to IAF RG NDB, then according to approach chart	Cross KUROR at 2150 or above, IAF RG NDB at 900 or above	RWY 18 admitted for visual approach only
REPLI 4C REPLI FOUR CHARLIE	On track 089° to IAF RG NDB, then according to approach chart	Cross REPLI at 2150 or above, IAF RG NDB at 900 or above	RWY 18 admitted for visual approach only
TIRPU 1C TIRPU ONE CHARLIE	On track 260° to IAF RG NDB, then according to approach chart	Cross TIRPU at 2450 or above, IAF RG NDB at 900 or above	RWY 18 admitted for visual approach only
TOKSA 4C TOKSA FOUR CHARLIE	On track 345° to IAF RG NDB, then according to approach chart	Cross TOKSA at 2450 or above, IAF RG NDB at 900 or above	RWY 18 admitted for visual approach only