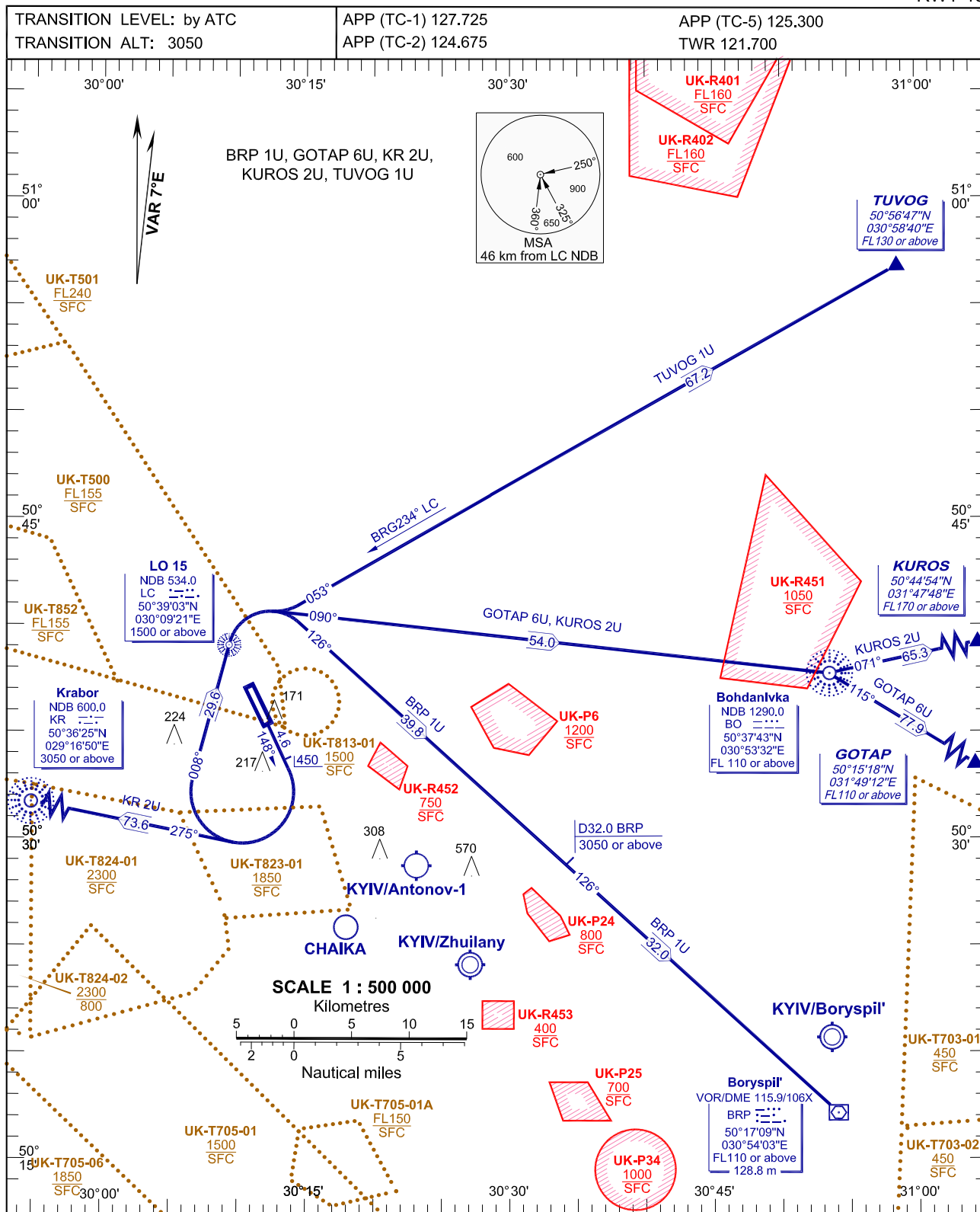


STANDARD DEPARTURE CHART  
INSTRUMENT (SID)-ICAOKYIV/Antonov-2  
RWY 15

CHANGE: UK-T824-01.

SID RWY 15

Designator	Route	Altitude	Remarks
BRP 1U Boryspil' ONE UNIFORM	On track 148° climb to 450, turn RIGHT on track 008° to LC NDB, then turn RIGHT on track 126° to BRP VOR/DME	Cross LC NDB at 1500 or above, D32,0 BRP DME at 3050 or above, BRP VOR/DME at FL110 or above	Minimum climb gradient 5% up to 1500 m
GOTAP 6U GOTAP SIX UNIFORM	On track 148° climb to 450, turn RIGHT on track 008° to LC NDB, turn RIGHT on track 090° to BO NDB, then turn RIGHT on track 115° from BO NDB to GOTAP	Cross LC NDB at 1500 or above, BO NDB at FL110 or above, GOTAP at FL110 or above	Minimum climb gradient 5% up to 1500 m
KR 2U Krabor TWO UNIFORM	On track 148° climb to 450, then turn RIGHT on track 275° to KR NDB	Cross KR NDB at 3050 or above	Minimum climb gradient 5% up to 1500 m
KUROS 2U KUROS TWO UNIFORM	On track 148° climb to 450, turn RIGHT on track 008° to LC NDB, turn RIGHT on track 090° to BO NDB, then turn LEFT on track 071° from BO NDB to KUROS	Cross LC NDB at 1500 or above, BO NDB at FL110 or above, KUROS at FL170 or above	Minimum climb gradient 5% up to 1500 m
TUVOG 1U TUVOG ONE UNIFORM	On track 148° climb to 450, turn RIGHT on track 008° to LC NDB, then turn RIGHT on track 053° (BRG234° LC NDB) to TUVOG	Cross LC NDB at 1500 or above, TUVOG at FL130 or above	Minimum climb gradient 5% up to 1500 m