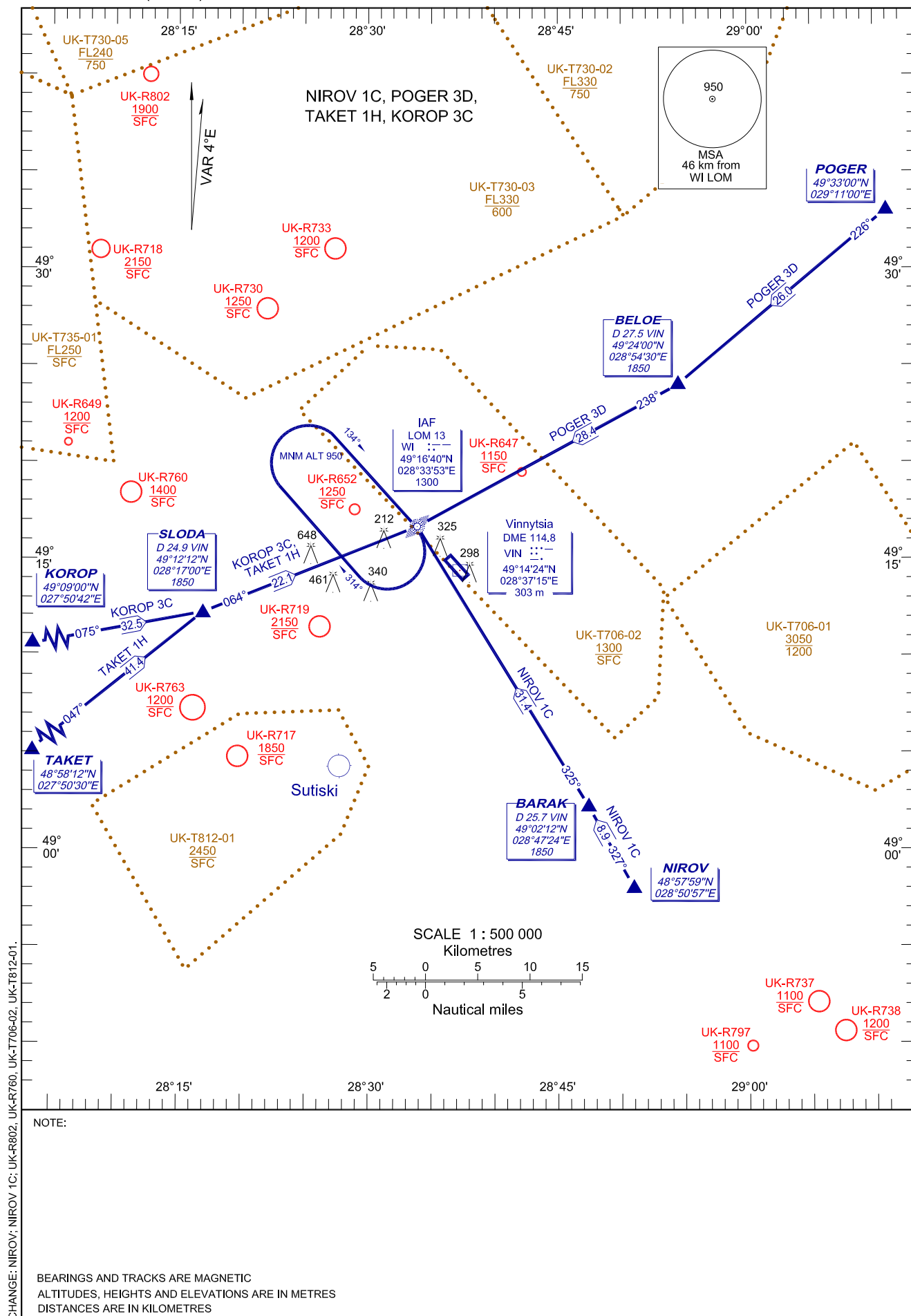


STANDARD ARRIVAL CHART
INSTRUMENT (STAR)-ICAO

TRANSITION LEVEL : by ATC

TRANSITION ALT : 3050

TWR 128.000

VINNYTSIA/Gavryshivka
RWY 13

STAR RWY 13

Designator	Route	Altitude	Remarks
NIROV 1C NIROV ONE CHARLIE	On track 327° to BARAK, turn LEFT on track 325° to IAF WI LOM, then according to approach chart	Cross BARAK at 1850, cross IAF WI LOM at 1300	nil
POGER 3D POGER THREE DELTA	On track 226° to BELOE, turn RIGHT on track 238° to IAF WI LOM, then according to approach chart.	Cross BELOE at 1850, cross IAF WI LOM at 1300.	nil
TAKET 1H TAKET ONE HOTEL	On track 047° to SLODA, turn RIGHT on track 064° to IAF WI LOM, then according to approach chart.	Cross SLODA at 1850, cross IAF WI LOM at 1300.	nil
KOROP 3C KOROP THREE CHARLIE	On track 075° to SLODA, turn LEFT on track 064° to IAF WI LOM, then according to approach chart.	Cross SLODA at 1850, cross IAF WI LOM at 1300.	nil