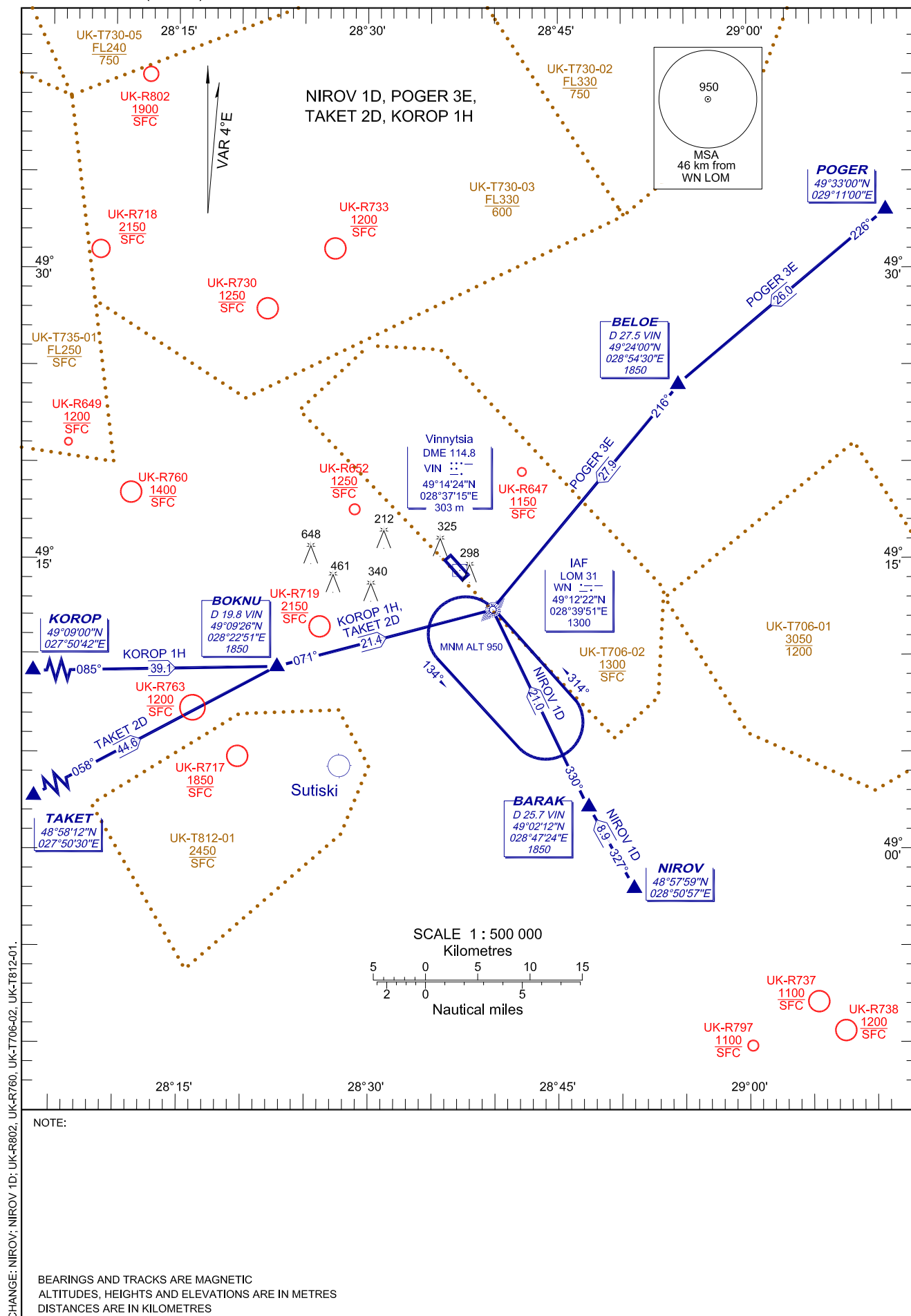


STANDARD ARRIVAL CHART
INSTRUMENT (STAR)-ICAO

TRANSITION LEVEL : by ATC

TRANSITION ALT : 3050

TWR 128.000

VINNYTSIA/Gavryshivka
RWY 31

CHANGE: NIROV 1D: UK-R802, UK-R760, UK-T706-02, UK-T812-01.

STAR RWY 31

Designator	Route	Altitude	Remarks
NIROV 1D NIROV ONE DELTA	On track 327° to BARAK, turn RIGHT on track 330° to IAF WN LOM, then according to approach chart	Cross BARAK at 1850, cross IAF WN LOM at 1300	nil
POGER 3E POGER THREE ECHO	On track 226° to BELOE, turn LEFT on track 216° to IAF WN LOM, then according to approach chart.	Cross BELOE at 1850, cross IAF WN LOM at 1300.	nil
TAKET 2D TAKET TWO DELTA	On track 058° to BOKNU, turn RIGHT on track 071° to IAF WN LOM, then according to approach chart.	Cross BOKNU at 1850, cross IAF WN LOM at 1300.	nil
KOROP 1H KOROP ONE HOTEL	On track 085° to BOKNU, turn LEFT on track 071° to IAF WN LOM, then according to approach chart.	Cross BOKNU at 1850, cross IAF WN LOM at 1300.	nil