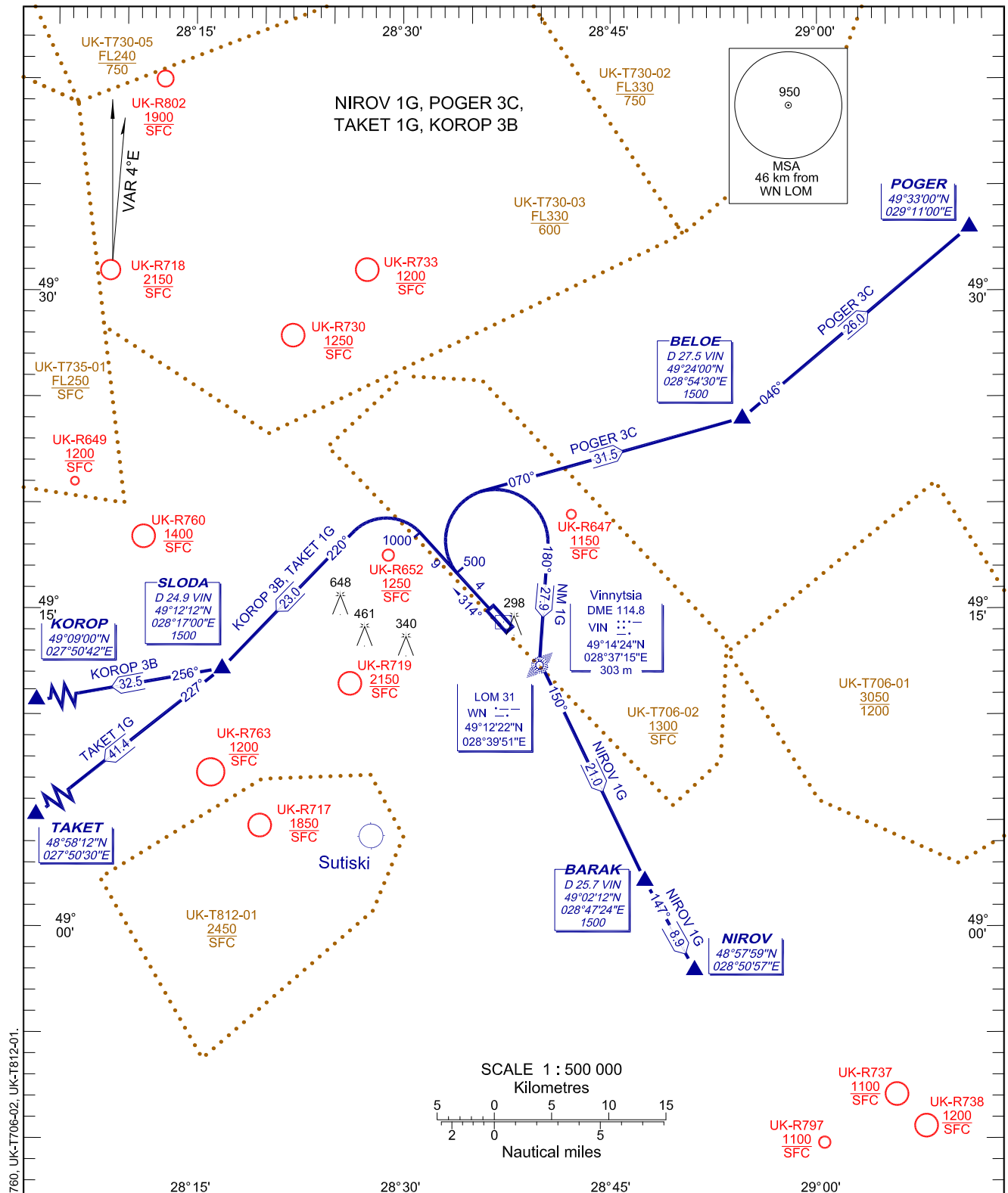


STANDARD DEPARTURE CHART
INSTRUMENT (SID)-ICAOTRANSITION LEVEL : by ATC
TRANSITION ALT : 3050

TWR 128.000

VINNITSIA/Gavryshivka
RWY31

NOTE:

1. Statistical data of aircraft performance are used for determination of the average flight path.
2. Noise abatement procedures should be applied by all aircraft types of day and night time according to Annex 16, Chapter 2, 3 ICAO.

BEARINGS AND TRACKS ARE MAGNETIC
ALTITUDES, HEIGHTS AND ELEVATIONS ARE IN METRES
DISTANCES ARE IN KILOMETRES

SID RWY 31

Designator	Route	Altitude	Remarks
NIROV 1G NIROV ONE GOLF	On track 314° climb to 500, turn RIGHT on track 180° to WN LOM, turn LEFT on track 150° to BARAK, turn LEFT on track 147° to NIROV	Cross BARAK at 1500	nil
POGER 3C POGER THREE CHARLIE	On track 314° climb to 500, turn RIGHT on track 070° to BELOE, turn LEFT on track 046° to POGER.	Cross BELOE at 1500.	nil
TAKET 1G TAKET ONE GOLF	On track 314° climb to 1000, turn LEFT on track 220° to SLODA, turn RIGHT on track 227° to TAKET.	Cross SLODA at 1500.	nil
KOROP 3B KOROP THREE BRAVO	On track 314° climb to 1000, turn LEFT on track 220° to SLODA, turn RIGHT on track 256° to KOROP.	Cross SLODA at 1500.	nil